

**HOUSING DEPARTMENT**



**Guide to**

***Modified***

***Units***



**September 2011  
3rd Edition**

## Table of Contents

<b>1. Introduction</b>	
<b>2. What the Guide Covers</b>	
<b>3. Housing Providers with Modified Units in Kingston:</b>	
Elizabeth Fry Society/Kaye Healey Homes -----	8 – 9
Lois Miller Co-operative Homes Inc.-----	10
Weller Arms Non-Profit Homes Inc.-----	11
Kingston Co-operative Homes Inc.-----	12
Dutch Heritage Villa-----	13
St. Andrew-Thomas Senior Citizen Residences Inc.-----	14
Porto Village Non-Profit Homes -----	15
Kingston Home Base-----	16 – 18
Town Homes Kingston -----	19 – 22
Kingston & Frontenac Housing Corporation -----	23 – 29
Marion Community Homes -----	30
Royal Canadian Legion Villa-----	31
<b>4. Housing Providers with Modified Units in Rural Area:</b>	
Loughborough Housing Corporation, Sydenham -----	32 – 33
North Frontenac Non-Profit Housing Corporation, Sharbot Lake -----	34
Town Homes Kingston, Glenburnie-----	35
<b>5. Attachments:</b>	
<b>5.1. Local Occupancy Standards -----</b>	<b>36</b>
<b>5.2. Canada Mortgage and Housing Corporation illustrations of typical         accessibility modifications for a wheel chair user -----</b>	<b>37 – 38</b>

This Guide is a result of the survey among special needs housing providers conducted by the Housing Department. The questionnaire was designed in consultation with the Non-Profit Advisory Group representing public housing, non-profit housing corporations, non-profit co-operatives, and federal housing providers. Each participating housing provider shared detailed information on housing projects with modified units to meet the needs of individuals with physical disabilities.

Acknowledgement is extended to Geographic Information System (GIS) department, City of Kingston.

## **1. Introduction**

Responsibilities for accessibility requirements under the *Social Housing Reform Act, 2000* (SHRA) is a priority for the City of Kingston as the Service Manager in administering the social housing portfolio and special needs housing in particular.

Special needs housing, as defined by the SHRA, is “a unit that is occupied or is made available for occupancy by a household having one or more individuals who require accessibility modifications or provincially-funded support services in order to live independently”.

As legislated, the Service Manager must ensure that the prescribed number of 74 modified units is maintained for persons with disabilities and households are selected for occupancy of the modified units in the prescribed manner.

It should be noted that responsibility for administering special needs housing and eligibility determination under Part V of the SHRA that deals with eligibility requirements for special needs housing is being assigned to individual special needs housing providers. However, the Service Manager should provide applicants for special needs housing with information pertaining to the availability of special needs housing in its service area being Kingston and the County of Frontenac.

With the intent to assist applicants for special needs housing in locating appropriate accommodation, Housing Department of the City of Kingston prepared this Guide to provide comprehensive information on housing options for individuals with physical disabilities. Listed housing providers and housing projects with modified units are administered by the City of Kingston as the Service Manager and are operating under public housing, non-profit, federal, and rent supplement programs.

Information in this Guide answers to numerous questions that may arise in the process of selecting appropriate modified unit, such as:

- Where housing projects with modified units are located?
- Is there any specific mandate of the project (for example, seniors only building)?
- What is the size of the modified unit?
- How much does it cost?
- What specific modifications are available?
- Where the unit is located within a building?
- Is a housing project with a modified unit closely located to shopping, hospital, schools, etc.?

Understanding limitations of this publication in answering all potential questions, it is advised to call listed housing providers directly to get more information about vacancies or availability of selected modified units suitable for an individual with physical disabilities and his/ her family.

This Guide serves as supplementary information to the Housing Department Public Information Guide on Rent-Geared-to-Income Assistance and Special Needs Housing, which is available for everyone who is seeking affordable accommodation in Kingston and the County of Frontenac.

Guide to Modified units is available at The Social Housing Registry, and at the offices of all special needs housing providers listed in this Guide.

**At The Social Housing Registry of Kingston and Frontenac:**

#362 Montreal Street,

Housing Department

Community Services Group,

Office hours: Monday, Wednesday, Thursday and Friday – 8:30 a.m. - 4:30 p.m.

Tuesday – 8:30 a.m. - 5:30 p.m.

**At The Social Housing Registry Urban and Rural Access Points:**

Urban Access Point at the Housing Help Centre

#426 Barrie Street, Kingston

Office hours: Monday to Friday 8:30 a.m. - 4:00 p.m.

Rural Access Point at the Loughborough Housing Corporation

Address: #4377, William Street, Box 400, Sydenham

Office hours: Monday to Thursday 9 a.m. - 4 p.m.

Rural Access Point at the North Frontenac Non-Profit Housing Corporation

#1096 B Clement Road, Sharbot Lake

Office hours: Monday to Friday 8:30 a.m. to 4:30 p.m.

You may download this Guide from the City of Kingston, Housing Department Website:

<http://www.cityofkingston.ca/residents/social/housing/registry/information.asp>

***Disclaimer***

Housing Department reserves the right not to be responsible for the correctness, completeness or quality of the information provided by participating housing providers in the Guide to Modified Units.

## **2. What the Guide Covers**

To better serve those who are seeking for modified/wheelchair accessible accommodation, the Guide provides general housing project information, indicates the unit size and specific unit modifications, shows project location, and specifies amenities in the neighbourhood.

Housing projects with senior citizen mandates are identified specifically. A mandate is a commitment of a housing provider to accommodate a particular client group. The definition of “seniors” varies among Social Housing Department. The majority of non-profit housing providers with senior mandates accommodate senior citizens over the age of 65; however, they may consider younger adults under 65 under the local Cascading Age Policy. Federal housing projects are managed under agreements with Canada Mortgage and Housing Corporation and may house seniors over 60 and those individuals who are involuntarily retired from the work force and are at least 50 years of age.

In response to the question on how much it costs, market rent is indicated by project/by unit and is subject to change. If the market rent is acceptable, please contact the housing provider directly. For financial assistance under public housing, non-profit and rent supplement programs, please apply for rent-gear-to-income assistance through The Social Housing Registry. For rent-gear-to-income units under federal programs, please contact the federal housing provider. Please refer to the list of housing providers in Table 1 for assistance.

Interior and exterior wheelchair accessibility features of a housing project are major factors in selection of a suitable modified unit by those mobility impaired applicants/tenants who use wheelchairs or motorized scooters. Specific unit modifications include wheelchair adjusted heights, wheelchair accessible pathway and doors, accessible control devices (lowered switches/outlets), accessible shelves/countertops and grab bars. These modifications vary and are grouped by habitable areas: entrance, living room, bedroom, kitchen, bathroom, and laundry. Project information also provides details on accessible pathways from parking area and availability of ramps. Some typical modifications are provided in the attachment with reference to Canada Mortgage and Housing Corporation.

You may select a housing project with modified units considering the following:

- location in urban or rural areas
- housing project mandate (seniors, family, no mandate)
- the amount of monthly rent
- available indoor and outdoor accessibility modifications
- amenities available in the neighbourhood
- access by public transportation.

Considering your family composition, you may select suitable size of the unit, for example room/or shared accommodation, one bedroom, two bedroom or three-bedroom. Housing providers are listed for your convenience by size of modified units in their housing projects in Table 2.

You may also choose a modified unit considering specific building type: single-family detached house, semi-detached, row/townhouse, low- or high-rise apartment building. Please refer to Table 3 for the list of housing providers by building type of their projects with modified units.

For information on Kingston Access Bus Services available for individuals with physical mobility impairment please contact the Kingston Access Bus office at 542-2512 or visit their website at [www.kingston.org/kas](http://www.kingston.org/kas). Passengers must meet eligibility criteria and register for service.

For information on Public Transportation availability please visit theCity’s website at <http://www.cityofkingston.ca/residents/transportation/transit/index.asp> or call 613-546-0000 (weekdays 8:00 a.m. to 5:00 p.m.)

**Table 1. Housing provider by program type**

---

**Public Housing**

---

Kingston & Frontenac Housing Corporation

---

**Non-profit housing program including non-profit co-operatives**

---

Elizabeth Fry Society/Kaye Healey Homes  
Lois Miller Co-operative Homes Inc.  
Weller Arms Non-Profit Homes Inc.  
Kingston Co-operative Homes Inc.  
Dutch Heritage Villa  
St. Andrew-Thomas Senior Citizen Residences Inc.  
Porto Village Non-Profit Homes  
Kingston Home Base  
Town Homes Kingston  
Kingston & Frontenac Housing Corporation  
Marion Community Homes  
Royal Canadian Legion Villa  
Loughborough Housing Corporation  
North Frontenac Non-Profit Housing Corporation

---

**Rent Supplement Program**

---

Kingston & Frontenac Housing Corporation

---

**Federal Housing Providers**

---

Dutch Heritage Villa

---

**Table 2. Housing providers grouped by size of modified units in their projects**

---

**One (1) Bedroom Units**

---

Elizabeth Fry Society/Kaye Healey Homes  
Weller Arms Non-Profit Homes Inc.  
Kingston Co-operative Homes Inc.  
Kingston Home Base  
Town Homes Kingston  
Kingston & Frontenac Housing Corporation  
Royal Canadian Legion  
Loughborough Housing Corporation  
St. Andrew-Thomas Senior Citizen Residences Inc.  
Marion Community Homes

---

**Two (2) Bedroom Units**

---

Lois Miller Co-operative Homes Inc.  
Weller Arms Non-Profit Homes Inc.  
North Frontenac Non-Profit Housing Corporation  
Porto Village Non-Profit Homes  
Town Homes Kingston  
Kingston & Frontenac Housing Corporation  
Marion Community Homes  
Royal Canadian Legion  
Dutch Heritage Villa

---

**Three (3) Bedroom Unit**

---

Town Homes Kingston

---

**Room/Shared Accommodation**

---

Kingston Home Base

**Table 3. Housing Providers with modified units in housing projects grouped by building type:**

---

**Single Family Detached House**

---

Kingston Home Base

---

**Semi-Detached House**

---

North Frontenac Non-Profit Housing Corporation

---

**Row/Townhouses**

---

Kingston Co-operative Homes Inc.  
Kingston Home Base  
Town Homes Kingston

---

**Low-Rise Apartment Buildings**

---

Elizabeth Fry Society/Kaye Healey Homes  
Lois Miller Co-operative Homes Inc.  
Weller Arms Non-Profit Homes Inc.  
St. Andrew-Thomas Senior Citizen Residences Inc.  
Town Homes Kingston  
Kingston & Frontenac Housing Corporation  
Loughborough Housing Corporation  
Dutch Heritage Villa

---

**High-Rise Apartment Buildings**

---

Town Homes Kingston  
Kingston & Frontenac Housing Corporation  
Marion Community Homes  
Royal Canadian Legion Villa  
Loughborough Housing Corporation

# Elizabeth Fry Society/Kaye Healey Homes

127 Charles Street  
Kingston, ON K7K 1V8

(613) 544-1744

## Housing Project Located in City North (please contact housing provider directly for the address)

### Unit Profile

1 – 1 bedroom unit – Main Floor

Market Rent cost – please contact housing provider directly. For rent-geared-to-income assistance please contact The Social Housing Registry of Kingston and Frontenac.

**Occupancy Standards** – provider applies Occupancy Standards for Special Needs approved by their Board – Please contact housing provider directly.

<b>Modifications</b>	<b>Entrance</b>	<b>Living Room</b>	<b>Bedroom</b>	<b>Storage/ Utility /Laundry</b>	<b>Kitchen</b>	<b>Bathroom</b>
Wheel chair adjusted heights	X	X	X		X	X
Wheel chair accessible path and doors	X	X	X	X	X	X
Non-slip floors						
Accessible control devices (lowered switches/outlets)		X	X		X	X
Accessible shelves/countertops (Customized kitchen/bathroom for wheel chair modifications)					X	
Grab bars						X

Entrance into the building is at street level via ramp, and barrier free path from parking lot. Electrical switches, thermostats, intercom switches, door handles are wheel chair accessible.

### **Amenities available in the Neighbourhood:**

School 432.51 m (1419 ft) – 3.19 km (1.98 mi)  
Shopping 2.04 km (1.27 mi) – 7.38 km (4.59 mi)

Church – 289.26 m (949 ft) – 858.88 m (2808 ft)  
Hospital 792.18 m (2599 ft) – 2 74 km (1.17 mi)

Public transportation – please visit <http://www.cityofkingston.ca/residents/transportation/transit/index.asp>



# Elizabeth Fry Society/Kaye Healey Homes

127 Charles Street  
Kingston, ON K7K 1V8

(613) 544-1744

## Housing Project Located in City North (please contact housing provider directly for the address)

### Unit Profile

1 – 1 bedroom unit – Lower Level

Market Rent cost – please contact housing provider directly. For rent-geared-to-income assistance please contact The Social Housing Registry of Kingston and Frontenac.

**Occupancy Standards** – provider applies Occupancy Standards for Special Needs approved by their Board – Please contact housing provider directly.

<b>Modifications</b>	<b>Entrance</b>	<b>Living Room</b>	<b>Bedroom</b>	<b>Storage/ Utility /Laundry</b>	<b>Kitchen</b>	<b>Bathroom</b>
Wheel chair adjusted heights						
Wheel chair accessible path and doors	X	X	X		X	X
Non-slip floors						
Accessible control devices (lowered switches/outlets)	X	X	X		X	X
Accessible shelves/countertops (Customized kitchen/bathroom for wheel chair modifications)					X	X
Grab bars						X

Entrance into the unit is at street level

### **Amenities available in the Neighbourhood:**

School, Church, Shopping and Hospital

Public transportation – please visit <http://www.cityofkingston.ca/residents/transportation/transit/index.asp>



**.Lois Miller Co-operative Homes Inc.**

202-234 Guthrie Drive  
Kingston, ON K7K 6K8

(613) 545-1375

**Housing Project Location: 298 Guthrie Drive**

**Unit Profile**

2 – 2 bedroom unit – 2<sup>nd</sup> (main floor, entry floor) Market Rent cost – please contact housing provider directly.  
For rent-geared-to-income assistance please contact The Social Housing Registry of Kingston and Frontenac.

**Occupancy Standards** – approved by the City of Kingston (refer to the attachment)

Modifications	Entrance	Living Room	Bedroom	Storage/ Utility /Laundry	Kitchen	Bathroom
Wheel chair adjusted heights					X	X
Wheel chair accessible path and doors	X	X	X	X	X	X
Non-slip floors	X	X	X	X	X	X
Accessible control devices (lowered switches/outlets)	X	X	X	X	X	X
Accessible shelves/countertops					X	X
Grab bars						X

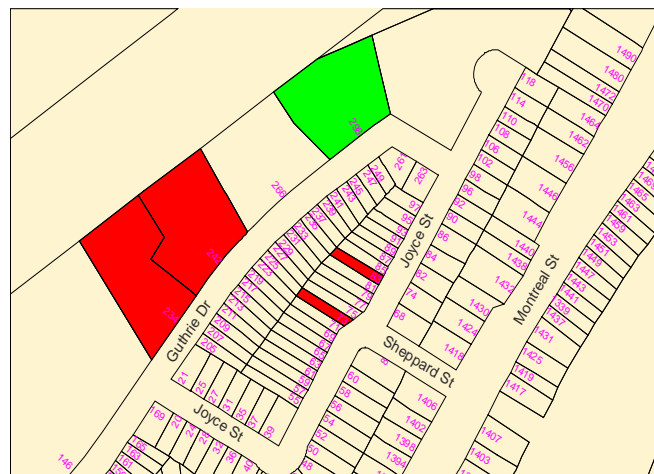
Entrance into the building at 298 Guthrie Drive is wheel chair accessible by a ramp and is barrier free from the parking lot. All control & safety devices are wheel chair accessible.

**Amenities available in the Neighbourhood:**

School 883 m (2896.98 ft) – 1.11 km (3641.73 ft)  
Shopping 4.68 km (2.91 mi) – 8.27 km (5.14 mi)

Church 1.28 km (4199.48 ft) – 2.9 km (1.8 mi)  
Hospital 5.2 km (3.34 mi) – 6.4 km (3.98 mi)

Public transportation: please visit <http://www.cityofkingston.ca/residents/transportation/transit/index.asp>



**Weller Arms Non-Profit Homes Inc.**

65 Daly Street  
Kingston, ON K7K 6Y4

(613) 549-8397

**Housing Project Location: 65 Daly Street**

**Unit Profile**

1 – 1 bedroom unit – main floor

1 – 2 bedroom unit – main floor

Market Rent cost – please contact housing provider directly. For rent-geared-to-income assistance please contact The Social Housing Registry of Kingston and Frontenac.

**Occupancy Standards** – approved by the City of Kingston (Refer to the attachment)

<b>Modifications</b>	<b>Entrance</b>	<b>Living Room</b>	<b>Bedroom</b>	<b>Storage/ Utility /Laundry</b>	<b>Kitchen</b>	<b>Bathroom</b>
Wheel chair adjusted heights					X	X
Wheel chair accessible path and doors	X	X	X	X	X	X
Non-slip floors (tile)	X	X	X	X	X	X
Accessible control devices (lowered switches/outlets)	X	X	X	X	X	X
Accessible Shelves/Countertops					X	X
Grab bars						X
Tilt mirrors						X

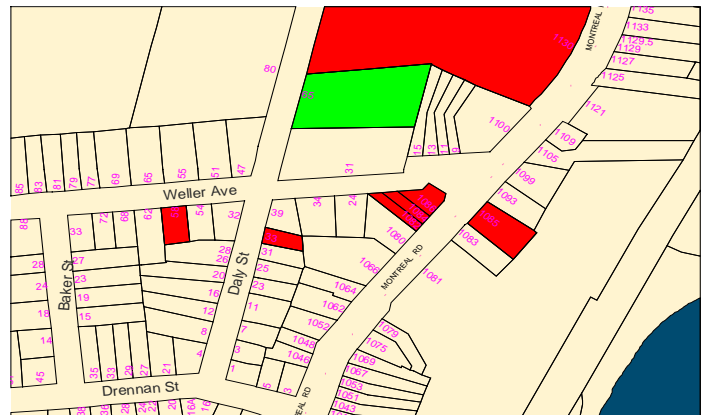
Wheel chair accessibility at street level into the entrance of the building and path from parking lot to building entrance is barrier free and entrance door is equipped with a power door opener with guardrails along the corridors. All control, safety devices and balcony are wheel chair accessible.

**Amenities available in the Neighbourhood:**

School 232 m (719 ft) – 778 m (2547 ft)  
Shopping 3.84 km (2.27 mi) – 5.3 km (3.65 mi)

Church 53.6 m (214 ft) – 724 m (2370 ft)  
Hospital 3.61 km (2.24 mi) – 5.25 km (3.27 mi)

Public transportation: please visit <http://www.cityofkingston.ca/residents/transportation/transit/index.asp>



**Kingston Co-operative Homes Inc.**

14-1338 Princess Street  
Kingston, ON K7M 7N9

(613) 544-3873

**Housing Project Location 1338 Princess Street**

**Unit Profile**

2 – 1 bedroom units – ground level

Market Rent cost – please contact housing provider directly. For rent-geared-to-income assistance please contact The Social Housing Registry of Kingston and Frontenac.

**Occupancy Standards** – approved by the City of Kingston (refer to the attachment)

<b>Modifications</b>	<b>Entrance</b>	<b>Living Room</b>	<b>Bedroom</b>	<b>Storage/ Utility /Laundry</b>	<b>Kitchen</b>	<b>Bathroom</b>
Wheel chair adjusted heights	X	X	X	X	X	X
Wheel chair accessible path and doors	X	X	X	X	X	X
Non-slip floors						
Accessible control devices (lowered switches/outlets)	X	X	X	X	X	X
Accessible shelves/countertops – Partial in Kitchen			X		X	X
Grab bars						X

Entrance into the building at 1338 Princess Street is at street level and barrier free path from parking lot and entrance door is equipped with a power door operator. All controls and safety devices are wheel chair accessible. Thermostat may be problem for some limited mobility persons.

**Amenities available in the Neighbourhood:**

School 446 m (1463.25 ft) – 1.15 km (.72 mi)  
Shopping 940 m (2083.99 ft) – 1.56 km (.99 mi)

Church 879 m (2883.86 ft) – 1.88 km (1.17 mi)  
Hospital 2.04 km (1.27 mi) – 3.78 km (2.35 mi)

Public transportation: please visit <http://www.cityofkingston.ca/residents/transportation/transit/index.asp>



# Dutch Heritage Villa

480 Elliott Avenue  
Kingston, ON K7K 6J9

(613) 546-2016

## Housing Project Location: 480 Elliott Avenue (Seniors mandate)

### Unit Profile

2 – 2 bedroom units – 1<sup>st</sup> floor

Market Rent cost – please contact housing provider directly. For rent-geared-to-income assistance please contact The Social Housing Registry of Kingston and Frontenac.

**Occupancy Standards** - provider applies Occupancy Standards for Special Needs approved by their Board – Please contact housing provider directly.

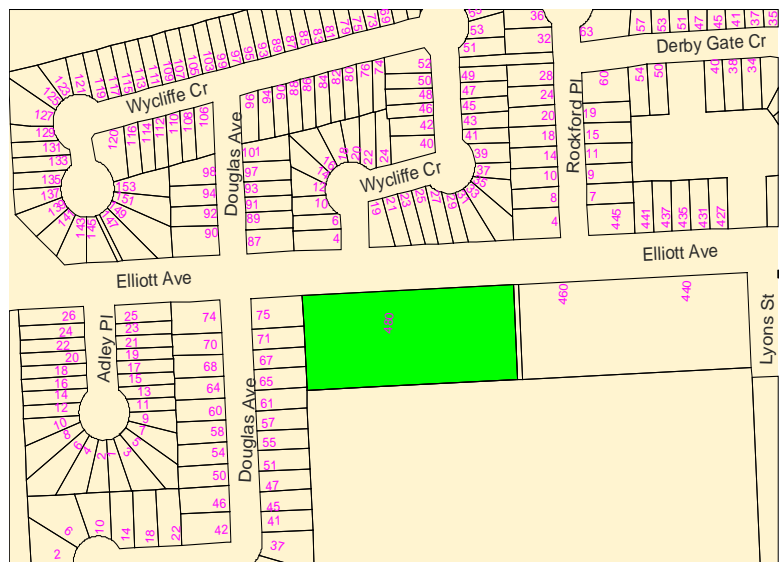
Modifications	Entrance	Living Room	Bedroom	Storage/ Utility /Laundry	Kitchen	Bathroom
Wheel chair adjusted heights					X	X
Wheel chair accessible path and doors	X					
Non-slip floors						
Accessible control devices (lowered switches/outlets)		X			X	
Accessible shelves/countertops						
Grab bars						X

Entrance into the building at 480 Elliott Avenue is at street level and barrier free path from parking lot into building entrance. All control and safety devices are wheel chair accessible.

**Amenities available in the Neighbourhood:**  
Shopping 4.07 km (2.53 mi) – 5.45 km (3.39 mi)

Church 1.33 km (.83 mi) – 10.2 km (6.34 mi)  
Hospital 2.95 km (1.83 mi) – 4.59 km (2.85 mi)

Public Transportation: please visit <http://www.cityofkingston.ca/residents/transportation/transit/index.asp>



# St. Andrew-Thomas Senior Citizen Residences Inc.

760 Front Road  
Kingston, ON K7M 4L7

(613) 384-8966

## Housing Project Location: 760 Front Road (Seniors mandate)

### Unit Profile

- 2 – 1 bedroom units – ground level
- 2 – 2 bedroom units – ground level

Market Rent cost – please contact housing provider directly. For rent-geared-to-income assistance please contact The Social Housing Registry of Kingston and Frontenac.

**Occupancy Standards** – No specific internal policy for modified units – Use Occupancy Standards approved by the City of Kingston (refer to the attachment)

Modifications	Entrance	Living Room	Bedroom	Storage/ Utility /Laundry	Kitchen	Bathroom
Wheel chair adjusted heights					X	X
Wheel chair accessible path and doors	X	X	X		X	X
Non-slip floors						
Accessible control devices (lowered switches/outlets)	X	X	X	X	X	X
Accessible shelves/countertops			X		X	X
Grab bars						X

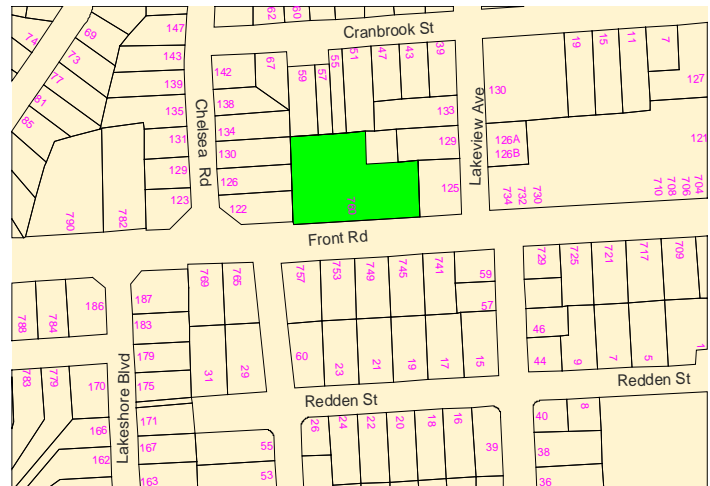
Entrance into the building at 760 Front Road is at street level via a ramp, and barrier free path from parking lot. Front entrance is equipped with a power door operator and all control and safety devices are wheel chair accessible within the building and floors are sloped or with ramps to provide access in change of levels.

### **Amenities available in the Neighbourhood:**

School 163 m (534.78 ft) – 6.84 km (4.25 mi)  
Shopping 1.97 km (1.22 mi) – 5.13 km (3.91 mi)

Church 229 m (751.31 ft) – 7.05 km (4.38 mi)  
Hospital 3.58 km (2.23 mi) – 5.33 km (3.31 mi)

Public Transportation: please visit <http://www.cityofkingston.ca/residents/transportation/transit/index.asp>



# Porto Village Non-Profit Homes

Box 1, 700 Division Street  
Kingston, ON K7M 6N8

(613) 544-8362

## Housing Project Location: 700 Division Street

### Unit Profile

1 – 2 bedroom unit – 1<sup>st</sup> floor

Market Rent cost – please contact housing provider directly. For rent-geared-to-income assistance please contact The Social Housing Registry of Kingston and Frontenac.

**Occupancy Standards** – provider applies Occupancy Standards for Special Needs approved by their Board – Please contact housing provider directly.

Modifications	Entrance	Living Room	Bedroom	Storage/ Utility /Laundry	Kitchen	Bathroom
Wheel chair adjusted heights	X	X	X	X	X	X
Wheel chair accessible path and doors	X	X	X	X	X	X
Non-slip floors						
Accessible control devices (lowered switches/outlets)	X	X	X	X	X	X
Accessible shelves/countertops					X	X
Grab bars						X

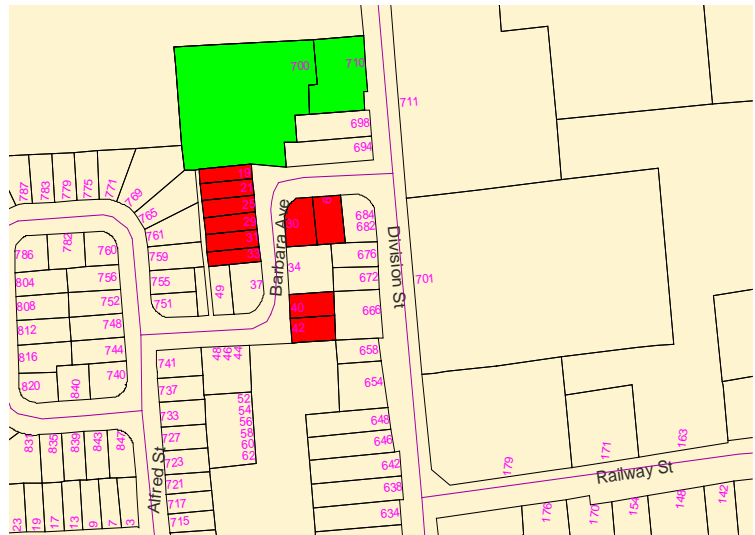
Entrance into the building at 700 Division Street is at street level, and barrier free path from parking lot. Access to balcony, all control and safety devices are wheel chair accessible within the building and entrance door is equipped with a power door operator.

### **Amenities available in the Neighbourhood:**

School 575 m (1886.48 ft) – 4.49 km (2.79 mi)  
Shopping 1.75 km (1.09 mi) – 6.02 km (3.74 mi)

Church 356 m (1167.98 ft) – 6.53 km (4.06 mi)  
Hospital 2.23 km (1.39 mi) – 3.30 km (2.05 mi)

Public transportation: please visit <http://www.cityofkingston.ca/residents/transportation/transit/index.asp>



# Kingston Home Base Housing

417 Bagot Street  
Kingston, ON K7K 3C1

(613) 542-6672

## Housing Project Location: 235 Conacher Drive

### Unit Profile

2 – 1 bedroom units – ground level

Market Rent cost – please contact housing provider directly. For rent-geared-to-income assistance please contact The Social Housing Registry of Kingston and Frontenac.

**Occupancy Standards** – approved by the City of Kingston (refer to the attachment)

Modifications	Entrance	Living Room	Bedroom	Storage/ Utility /Laundry	Kitchen	Bathroom
Wheel chair adjusted heights				X	X	X
Wheel chair accessible path and doors	X	X	X	X	X	X
Non-slip floors						
Accessible control devices (lowered switches/outlets)						
Accessible shelves/countertops					X	X
Grab bars			X			X

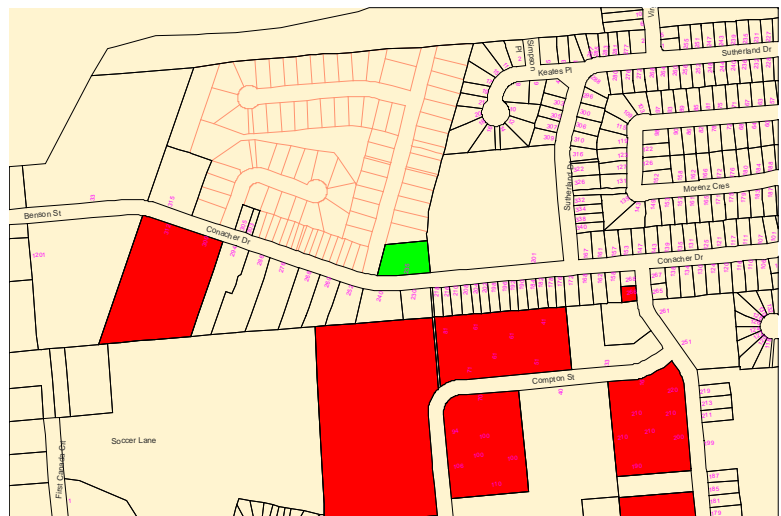
Entrance into the building at 235 Conacher Drive is at street level and barrier free path from the parking lot. Interior and exterior walking surfaces are barrier free, with sloped floors or ramps are provided if there is a change in level. All controls and safety devices are wheel chair accessible.

### **Amenities available in the Neighbourhood:**

School 473 m (1551.4 ft) – 8.60 km (5.34 mi)  
Shopping 3.41 km (2.12 mi) – 6.88 km (4.28 mi)

Church 3.09 m (1013.78 ft) – 7.79 km (4.84 mi)  
Hospital 4.67 km (2.90 mi) – 6.13 km (3.81 mi)

Public transportation: please visit <http://www.cityofkingston.ca/residents/transportation/transit/index.asp>



# Kingston Home Base Housing

417 Bagot Street  
Kingston, ON K7K 3C1

(613) 542-6672

## Housing Project Location: 6 Dunkirk Avenue

### Unit Profile

2 shared accommodations (room) – ground level

Market Rent cost – please contact housing provider directly. For rent-geared-to-income assistance please contact The Social Housing Registry of Kingston and Frontenac.

**Occupancy Standards** – approved by the City of Kingston (refer to the attachment)

Modifications	Entrance	Living Room	Bedroom	Storage/ Utility /Laundry	Kitchen	Bathroom
Wheel chair adjusted heights						X
Wheel chair accessible path and doors	X	X	X		X	X
Non-slip floors						X
Accessible control devices (lowered switches/outlets)						
Accessible shelves/countertops						X
Grab bars						X

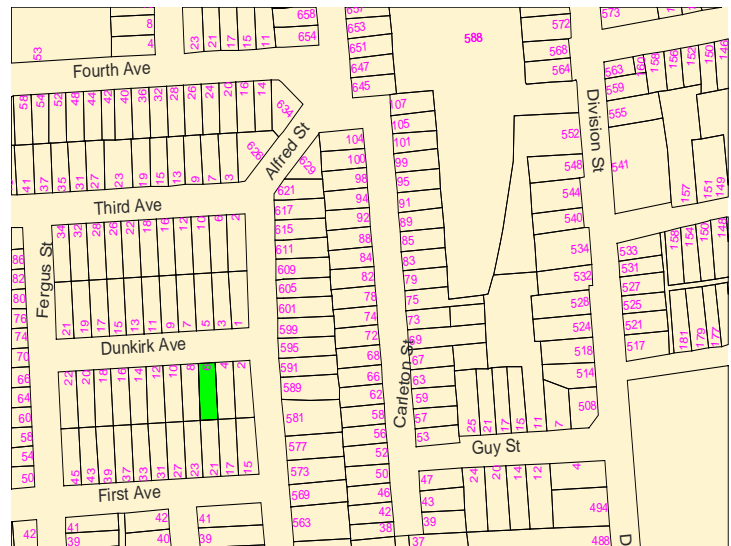
Entrance into the building at 6 Dunkirk Avenue is via a ramp and barrier free path from the parking lot. Interior and exterior walking surfaces are barrier free, with sloped floors or ramps are provided if there is a change in level.

### **Amenities available in the Neighbourhood:**

School 274 m (898.95 ft) – 2.71 km (1.69 mi)  
Shopping 1.15 km (3772.97 ft) – 3.73 km (2.32 mi)

Church 244 m (800.53 ft) – 3.14 km (1.95 mi)  
Hospital 2.31 km (1.44 mi) – 2.94 km (1.83 mi)

Public transportation: please visit <http://www.cityofkingston.ca/residents/transportation/transit/index.asp>



# Kingston Home Base Housing

417 Bagot Street  
Kingston, ON K7K 3C1

(613) 542-6672

## Housing Project Location: 41 Joseph Street

### Unit Profile

2 – 1 bedroom unit – Main Floor

Market Rent – please refer to Housing Provider. For rent-geared-to-income assistance please contact the Social Housing Registry of Kingston and Frontenac.

**Occupancy Standards** – provider applies Occupancy Standards for Special Needs approved by their Board – Please contact housing provider directly.

Modifications	Entrance	Living Room	Bedroom	Storage/ Utility /Laundry	Kitchen	Bathroom
Wheel chair adjusted heights					X	X
Wheel chair accessible path and doors	X	X	X	X	X	X
Non-slip floors						
Accessible control devices (lowered switches/outlets)	X	X	X	X	X	X
Accessible shelves/countertops (Customized kitchen/bathroom for wheel chair modifications)					X	X
Grab bars						X

Entrance into the building at 41 Joseph Street is at street level, and barrier free path from parking lot. Electrical switches, thermostats, intercom switches, door handles are wheel chair accessible.

### **Amenities available in the Neighbourhood:**

Schools, Worship Centers', Shopping, Hospitals

Public transportation – please visit <http://www.cityofkingston.ca/residents/transportation/transit/index.asp>.



# Town Homes Kingston

37 Cassidy Street Unit 222  
Kingston, ON K7K 7B3

(613) 542-0443

## Housing Project Location: 375 Patrick Street

### Unit Profile

- 1 – 1 bedroom unit – ground level
- 3 – 2 bedroom units – ground level

Market Rent cost – please contact housing provider directly. For rent-geared-to-income assistance please contact The Social Housing Registry of Kingston and Frontenac.

**Occupancy Standards** – provider applies Occupancy Standards for Special Needs approved by their Board – Please contact housing provider directly.

Modifications	Entrance	Living Room	Bedroom	Storage/ Utility /Laundry	Kitchen	Bathroom
Wheel chair adjusted heights	X	X	X	X	X	X
Wheel chair accessible path and doors	X	X	X	X	X	X
Non-slip floors						
Accessible control devices (lowered switches/outlets)	X	X	X	X	X	X
Accessible shelves/countertops					X	X
Grab bars (3 units have wheel in showers)						X

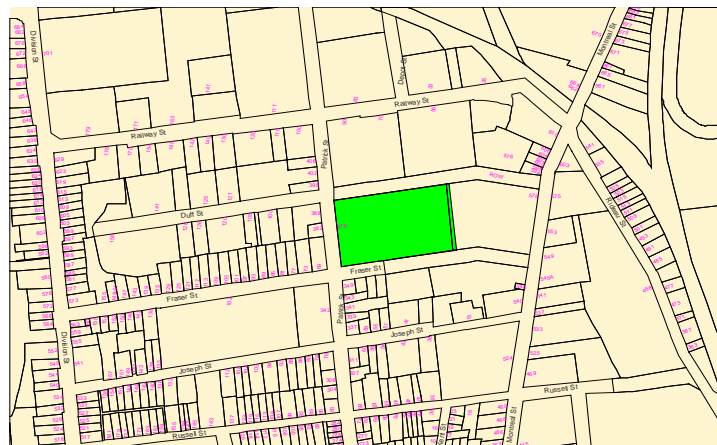
Entrance into building at 375 Patrick Street is at street level, via a ramp, and barrier free path from parking lot. All control and safety devices in the building are wheel chair accessible.

### **Amenities available in the Neighbourhood:**

School 524 m (1719.16 ft) – 7.24 km (4.50 mi)  
Shopping 2.22 km (1.38 mi) – 6.67 km (4.15 mi)

Church 577 m (1893.04 ft) – 7.20 km (4.47 mi)  
Hospital 1.79 km (1.11 mi) – 4.46 km (2.77 mi)

Public transportation: please visit <http://www.cityofkingston.ca/residents/transportation/transit/index.asp>.



# Town Homes Kingston

37 Cassidy Street Unit 222  
Kingston, ON K7K 7B3

(613) 542-0443

## Housing Project Location: 37 Cassidy Street

### Unit Profile

1 – 3 bedroom unit – 1<sup>st</sup> floor

Market Rent cost – please contact housing provider directly. For rent-geared-to-income assistance please contact The Social Housing Registry of Kingston and Frontenac.

**Occupancy Standards** – provider applies Occupancy Standards for Special Needs approved by their Board – Please contact housing provider directly.

Modifications	Entrance	Living Room	Bedroom	Storage/ Utility /Laundry	Kitchen	Bathroom
Wheel chair adjusted heights	X	X	X	X	X	X
Wheel chair accessible path and doors	X	X	X	X	X	X
Non-slip floors						
Accessible control devices (lowered switches/outlets)	X	X	X	X	X	X
Accessible shelves/countertops					X	X
Grab bars (unit has wheel in shower)						X

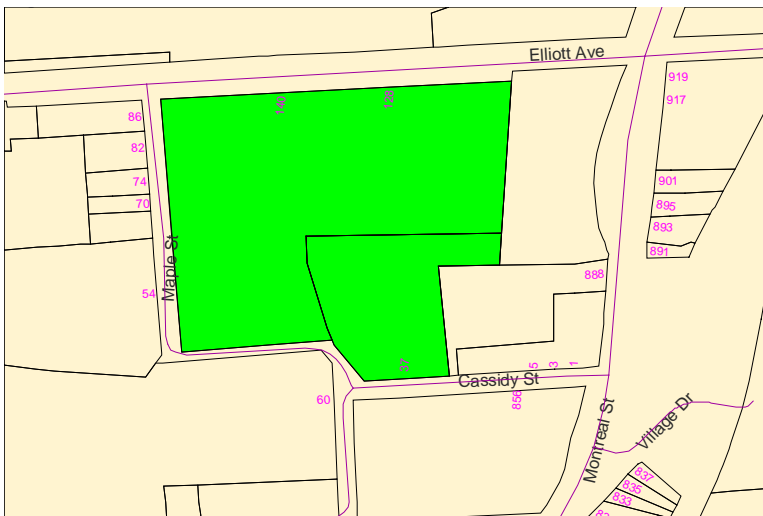
Entrance into the building at 37 Cassidy Street is at street level via a ramp and barrier free path from parking lot into building entrance. All safety devices and controls are wheel chair accessible.

### **Amenities available in the Neighbourhood:**

School 605 m (1984.91 ft) – 8.04 km (4.5 mi)  
Shopping 3.06 km (1.9 mi) – 6.91 km (4.29 mi)

Church 1.14 km (3740.16 ft) – 8.00 km (4.97 mi)  
Hospital 2.73 km (1.70 mi) – 5.43 km (3.37 mi)

Public transportation: please visit <http://www.cityofkingston.ca/residents/transportation/transit/index.asp>.



# Town Homes Kingston

37 Cassidy Street Unit 222  
Kingston, ON K7K 7B3

(613) 542-0443

## Housing Project Location: 257 Rideau Street

### Unit Profile

1 – 2 bedroom unit – ground floor

Market Rent cost – please contact housing provider directly. For rent-geared-to-income assistance please contact The Social Housing Registry of Kingston and Frontenac.

**Occupancy Standards** – provider applies Occupancy Standards for Special Needs approved by their Board – Please contact housing provider directly.

Modifications	Entrance	Living Room	Bedroom	Storage/ Utility /Laundry	Kitchen	Bathroom
Wheel chair adjusted heights	X	X	X	X	X	X
Wheel chair accessible path and doors	X	X	X	X	X	X
Non-slip floors						
Accessible control devices (lowered switches/outlets)	X	X	X	X	X	X
Accessible shelves/countertops					X	X
Grab bars						X

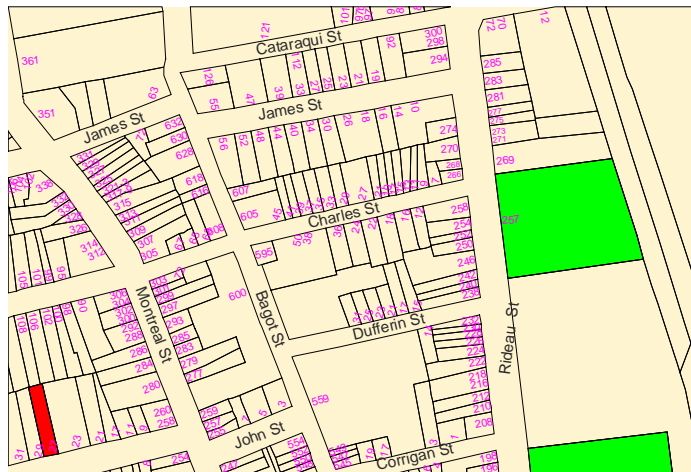
Entrance into the building at 257 Rideau Street is at street level via a ramp and barrier free path from parking lot into building entrance. All safety devices and controls are wheel chair accessible.

### **Amenities available in the Neighbourhood:**

School 662 m (2171.92 ft) – 8.00 km (4.97 mi)  
Shopping 2.72 km (1.69 mi) – 6.83 km (424 mi)

Church 230 m (754.59 ft) – 7.42 km (4.61 mi)  
Hospital 1.12 km (3674.54 ft) – 4.44 km (2.76 mi)

Public transportation: please visit <http://www.cityofkingston.ca/residents/transportation/transit/index.asp>.



# Town Homes Kingston

37 Cassidy Street Unit 222  
Kingston, ON K7K 7B3

(613) 542-0443

## Housing Project Location: 205 Rideau Street (Seniors mandate)

### Unit Profile

- 7 – 1 bedroom units – 1 on each floor
- 7 – 2 bedroom units – 1 on each floor

Market Rent – please refer Housing Provider. For rent-geared-to-income assistance please contact The Social Housing Registry of Kingston and Frontenac.

**Occupancy Standards** – provider applies Occupancy Standards for Special Needs approved by their Board – Please contact housing provider directly.

Modifications	Entrance	Living Room	Bedroom	Storage/ Utility /Laundry	Kitchen	Bathroom
Wheel chair adjusted heights	X	X	X	X	X	X
Wheel chair accessible path and doors	X	X	X	X	X	X
Non-slip floors						
Accessible control devices (lowered switches/outlets)	X	X	X	X	X	X
Accessible shelves/countertops (only 7 of bathroom and kitchen units)			X		X	X
Grab bars (1 – 2 bedroom has a wheel in shower)						X

Entrance into the building at 205 Rideau Street is at street level via a ramp and barrier free path from parking lot into building entrance and the entrance doors are equipped with a power door operator and guardrails are provided in corridors. All safety devices and controls are wheel chair accessible.

### **Amenities available in the Neighbourhood:**

School 651 m (2135.83 ft) – 8.00 km (4.97 mi)  
Shopping 2.74 km (1.70 mi) – 6.78 km (421 mi)

Church 295 m (967.85 ft) – 7.42 km (4.61 mi)  
Hospital 916 m (3005.25 ft) – 4.34 km (2.70 mi)

Public transportation: please visit <http://www.cityofkingston.ca/residents/transportation/transit/index.asp>.



# Rent supplement units administered by Kingston & Frontenac Housing Corporation

119 Van Order Drive  
Kingston, ON K7M 1B9

(613) 546-5591

## Housing Project Location: 117 Park Street

### Unit Profile

4 – 1 bedroom units – located on 4<sup>th</sup>, 5<sup>th</sup>, 6<sup>th</sup>, & 10<sup>th</sup> floor

Market Rent cost – please contact housing provider directly. For rent-geared-to-income assistance please contact The Social Housing Registry of Kingston and Frontenac.

**Occupancy Standards** - approved by the City of Kingston (refer to the attachment)

Modifications	Entrance	Living Room	Bedroom	Storage/ Utility /Laundry	Kitchen	Bathroom
Wheel chair adjusted heights	X	X	X	X	X	X
Wheel chair accessible path and doors	X	X	X	X	X	X
Non-slip floors						
Accessible control devices (lowered switches/outlets)	X	X	X	X	X	X
Accessible shelves/countertops	X	X	X	X	X	X
Grab bars						X

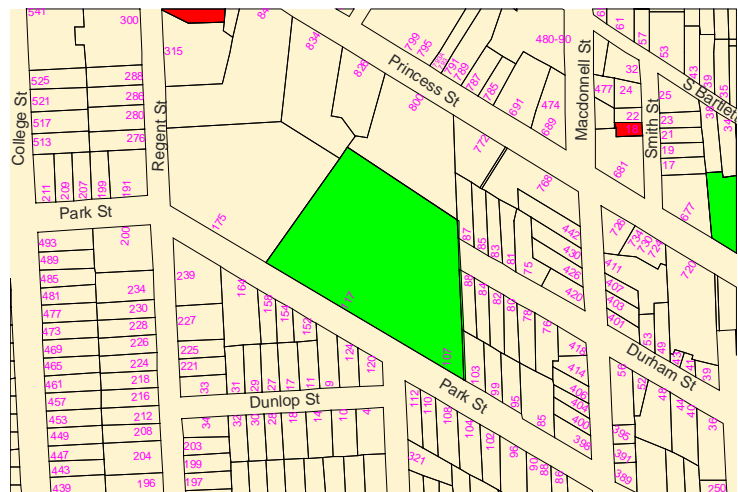
Entrance into the building at 117 Park Street is at sidewalk level via a ramp and barrier free path from parking lot to building entrance which is equipped with a power door operator. All control, safety devices and balcony are wheel chair accessible.

### **Amenities available in the Neighbourhood:**

School 294 m (964.57 ft) – 6.01 km (3.73 mi)  
Shopping 748 m (2454.07 ft) – 5.60 km (3.48 mi)

Church 246 m (807.09 ft) – 5.41 km (3.36 mi)  
Hospital 1.87 km (1.16 mi) – 2.76 km (1.72 mi)

Public transportation: please visit <http://www.cityofkingston.ca/residents/transportation/transit/index.asp>



# Rent supplement units administered by Kingston & Frontenac Housing Corporation

119 Van Order Drive  
Kingston, ON K7M 1B9

(613) 546-5591

## Housing Project Location: 722 John Counter Blvd

### Unit Profile

1 – 2 bedroom plus den (2 bathrooms) – 2<sup>nd</sup> floor

Market Rent cost – please contact housing provider directly. For rent-geared-to-income assistance please contact The Social Housing Registry of Kingston and Frontenac.

**Occupancy Standards** - approved by the City of Kingston (refer to the attachment)

Modifications	Entrance	Living Room	Bedroom	Storage/ Utility /Laundry	Kitchen	Bathroom
Wheel chair adjusted heights	X	X	X	X	X	X
Wheel chair accessible path and doors	X	X	X	X	X	X
Non-slip floors						
Accessible control devices (lowered switches/outlets)	X	X	X	X	X	X
Accessible shelves/countertops	X	X	X	X	X	X
Grab bars						X

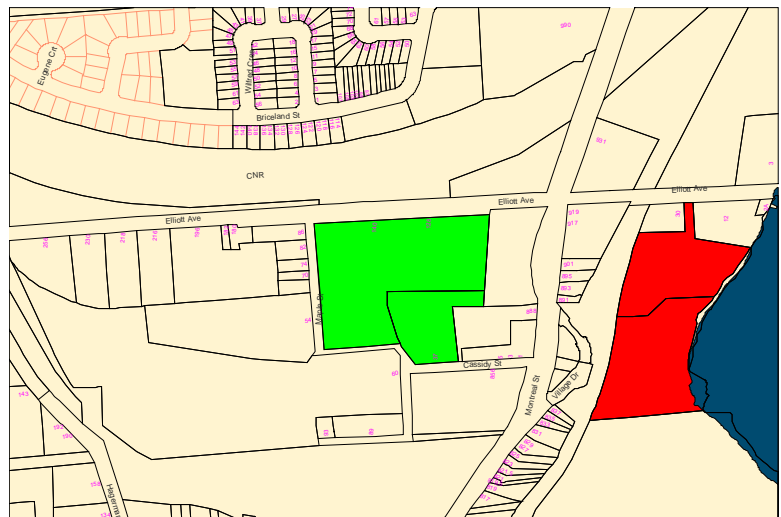
Entrance into the building at 128 Elliott Avenue is at sidewalk level via a ramp and barrier free path from parking lot to building entrance. All control, safety devices and balcony are wheel chair accessible.

### **Amenities available in the Neighbourhood:**

School 746 m (2447.51 ft) – 8.10 km (5.03 mi)  
Shopping 2.9 km (1.80 mi) – 6.89 km (4.28 mi)

Church 528 m (1732.28 ft) – 8.02 km (4.98 mi)  
Hospital 2.87 km (1.78 mi) – 5.51 km (3.42 mi)

Public transportation: please visit <http://www.cityofkingston.ca/residents/transportation/transit/index.asp>



# Rent supplement units administered by Kingston & Frontenac Housing Corporation

119 Van Order Drive  
Kingston, ON K7M 1B9

(613) 546-5591

## Housing Project Location: 766 John Counter Blvd.

### Unit Profile

2 – 1 bedroom units – 1<sup>st</sup> floor  
2 – 2 bedroom plus den (2 bathrooms) – 1<sup>st</sup> & 2<sup>nd</sup> floor

Market Rent cost – please contact housing provider directly. For rent-geared-to-income assistance please contact The Social Housing Registry of Kingston and Frontenac.

### **Occupancy Standards** - approved by the City of Kingston (refer to the attachment)

Modifications	Entrance	Living Room	Bedroom	Storage/ Utility /Laundry	Kitchen	Bathroom
Wheel chair adjusted heights	X	X	X	X	X	X
Wheel chair accessible path and doors	X	X	X	X	X	X
Non-slip floors						
Accessible control devices (lowered switches/outlets)	X	X	X	X	X	X
Accessible shelves/countertops	X	X	X	X	X	X
Grab bars (1 of the 2 bedroom units has a roll in shower)						X

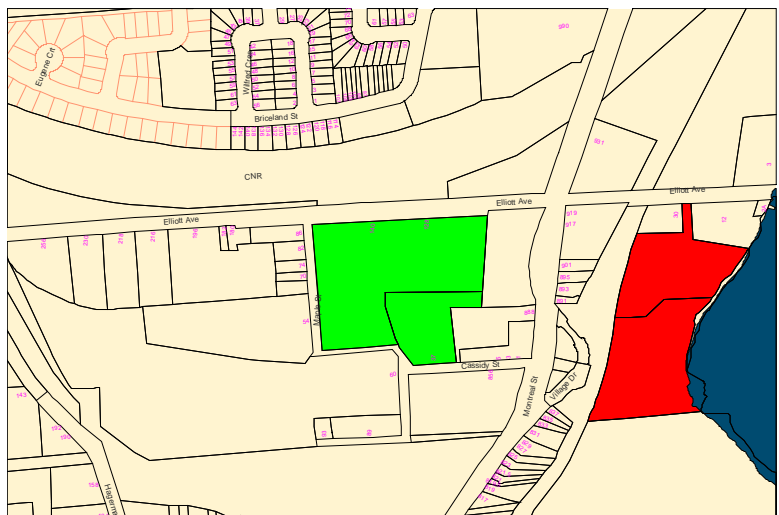
Entrance into the building at 140 Elliott Avenue is at sidewalk level via a ramp and barrier free path from parking lot to building entrance which is equipped with power door operator. All control, safety devices and balcony are wheel chair accessible.

### **Amenities available in the Neighbourhood:**

School 746 m (2447.51 ft) – 8.10 km (5.03 mi)  
Shopping 2.9 km (1.80 mi) – 6.89 km (4.28 mi)

Church 528 m (1732.28 ft) – 8.02 km (4.98 mi)  
Hospital 2.87 km (1.78 mi) – 5.51 km (3.42 mi)

Public transportation: please visit <http://www.cityofkingston.ca/residents/transportation/transit/index.asp>



# Kingston & Frontenac Housing Corporation

119 Van Order Drive  
Kingston, ON K7M 1B9

(613) 546-5591

## Housing Project Location: 205 Bagot Street

### Unit Profile

4 – 1 bedroom units – 1<sup>st</sup> floor

Market Rent cost – please contact housing provider directly. For rent-geared-to-income assistance please contact The Social Housing Registry of Kingston and Frontenac.

### **Occupancy Standards** - approved by the City of Kingston (refer to the attachment)

<b>Modifications</b>	<b>Entrance</b>	<b>Living Room</b>	<b>Bedroom</b>	<b>Storage/ Utility /Laundry</b>	<b>Kitchen</b>	<b>Bathroom</b>
Wheel chair adjusted heights	X	X	X	X	X	X
Wheel chair accessible path and doors	X	X	X	X	X	X
Non-slip floors						
Accessible control devices (lowered switches/outlets)	X	X	X	X	X	X
Accessible shelves/countertops	X	X	X	X	X	X
Grab bars (all units have a roll in shower)						X

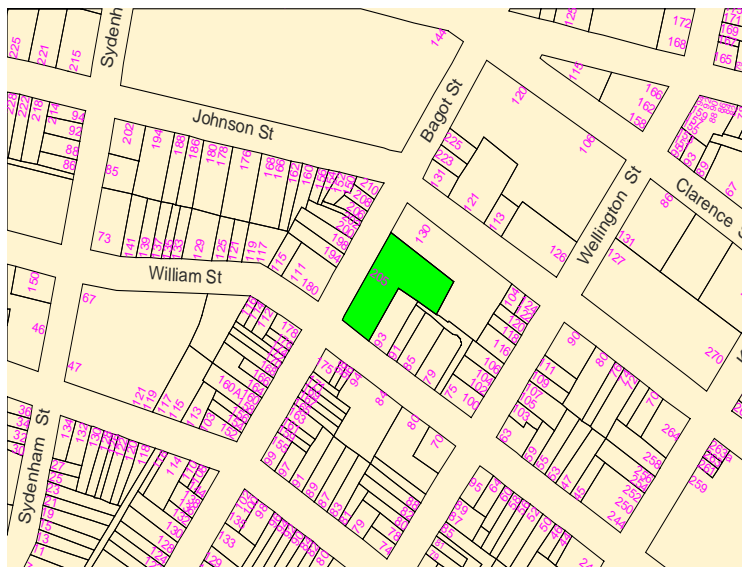
Entrance into the building at 205 Bagot Street is at sidewalk level via a ramp and barrier free path from parking lot to building entrance which is equipped with a power door operator. All control, safety devices are wheel chair accessible.

### **Amenities available in the Neighbourhood:**

School 140 m (459.32 ft) – 3.65 km (2.27 mi)  
Shopping 2.86 km (178 ft) – 7.54 km (4.69 mi)

Church 46.6 m (152.89 ft) – 7.6 km (4.72 mi)  
Hospital 191 m (626.64 ft) – 3.66 km (2.27 mi)

Public Transportation: please visit <http://www.cityofkingston.ca/residents/transportation/transit/index.asp>



# Kingston & Frontenac Housing Corporation

119 Van Order Drive  
Kingston, ON K7M 1B9

(613) 546-5591

## Housing Project Location: 381 Bagot Street

### Unit Profile

5 – 1 bedroom units – 1<sup>st</sup> floor

Market Rent cost – please contact housing provider directly. For rent-geared-to-income assistance please contact The Social Housing Registry of Kingston and Frontenac.

### **Occupancy Standards** - approved by the City of Kingston (refer to the attachment)

Modifications	Entrance	Living Room	Bedroom	Storage/ Utility /Laundry	Kitchen	Bathroom
Wheel chair adjusted heights	X	X	X	X	X	X
Wheel chair accessible path and doors	X	X	X	X	X	X
Non-slip floors						
Accessible control devices (lowered switches/outlets)	X	X	X	X	X	X
Accessible shelves/countertops	X	X	X	X	X	X
Grab bars						X

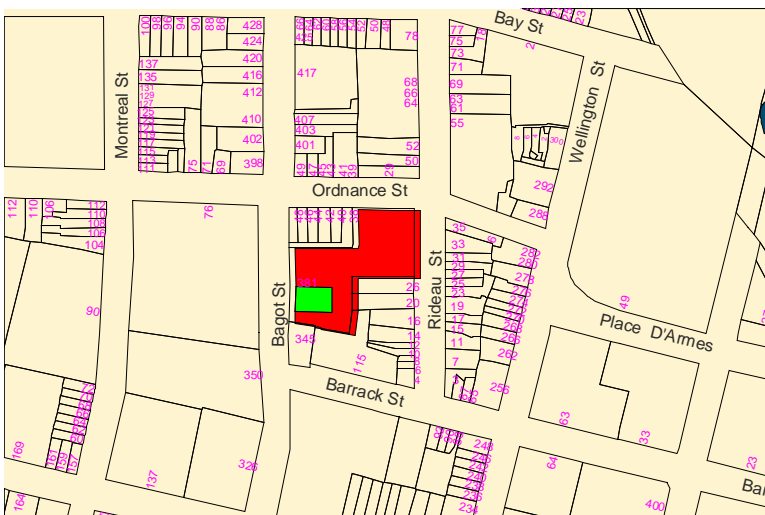
Entrance into the building at 381 Bagot Street is at sidewalk level via a ramp and barrier free path from parking lot to building entrance which is equipped with a power door operator. All control, safety devices and balcony are wheel chair accessible.

### **Amenities available in the Neighbourhood:**

School 271 m (889.11 ft) – 3.79 km (2.36 mi)  
Shopping 2.80 km (1.74 mi) – 7.45 km (4.63 mi)

Church 141 m (462.60 ft) – 3.56 km (2.21 mi)  
Hospital 405 m (1328.74 ft) – 3.96 km (2.46 mi)

Public Transportation: please visit <http://www.cityofkingston.ca/residents/transportation/transit/index.asp>



# Rent supplement units administered by Kingston & Frontenac Housing Corporation

119 Van Order Drive  
Kingston, ON K7M 1B9

(613) 546-5591

## Housing Project Location: 523 Portsmouth Avenue

### Unit Profile

10 – 1 bedroom units – 2 units on each floor 1 thru 5

Market Rent cost – please contact housing provider directly. For rent-geared-to-income assistance please contact The Social Housing Registry of Kingston and Frontenac.

### **Occupancy Standards** - approved by the City of Kingston (refer to the attachment)

Modifications	Entrance	Living Room	Bedroom	Storage/ Utility /Laundry	Kitchen	Bathroom
Wheel chair adjusted heights	X	X	X	X	X	X
Wheel chair accessible path and doors	X	X	X	X	X	X
Non-slip floors						
Accessible control devices (lowered switches/outlets)	X	X	X	X	X	X
Accessible shelves/countertops	X	X	X	X	X	X
Grab bars						X

Entrance into the building at 523 Portsmouth Avenue is at sidewalk level via a ramp and barrier free path from parking lot to building entrance which is equipped with a power door operator. All control, safety devices and balcony are wheel chair accessible.

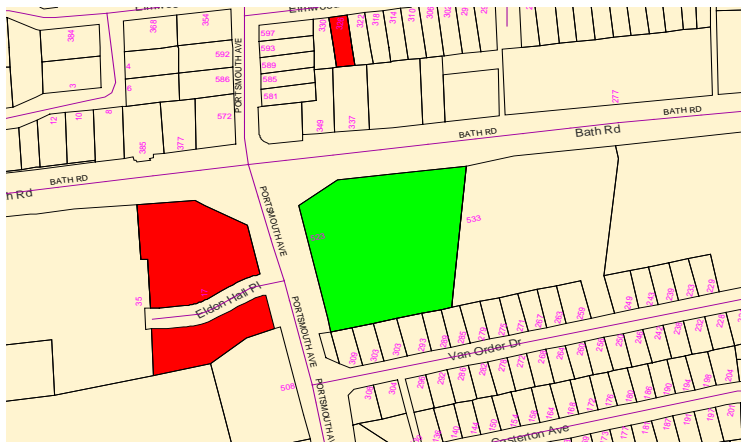
*This is supportive housing with the “Endymion Project” (Tri-Partite Agreement between K&FHC, Homestead – Rent Supp L/L and Providence Continuing Care – Support Provider – Providence Continuing Care maintains the waiting list for these units).*

### **Amenities available in the Neighbourhood:**

School 249 m (816.93 ft) – 5.24 km (3.26 mi)  
Shopping 936 m (3070.87 ft) – 4.00 km (2.49 mi)

Church 461 m (1512.47 ft) – 5.61 km (2.49 mi)  
Hospital 1.22 km (3/4 mi) – 3.36 km (2.09 mi)

Public Transportation: please visit <http://www.cityofkingston.ca/residents/transportation/transit/index.asp>



# Rent supplement units administered by Kingston & Frontenac Housing Corporation

119 Van Order Drive  
Kingston, ON K7M 1B9

(613) 546-5591

## Housing Project Location: - 94 Wright Crescent

### Unit Profile

1 bedroom unit – 3<sup>rd</sup> floor

Market Rent cost – please contact housing provider directly. For rent-geared-to-income assistance please contact The Social Housing Registry of Kingston and Frontenac.

**Occupancy Standards** - approved by the City of Kingston (refer to the attachment)

Modifications	Entrance	Living Room	Bedroom	Storage/ Utility /Laundry	Kitchen	Bathroom
Wheel chair adjusted heights	X	X	X	X	X	X
Wheel chair accessible path and doors	X	X	X	X	X	X
Non-slip floors						
Accessible control devices (lowered switches/outlets)	X	X	X	X	X	X
Accessible shelves/countertops	X	X	X	X	X	X
Grab bars						X

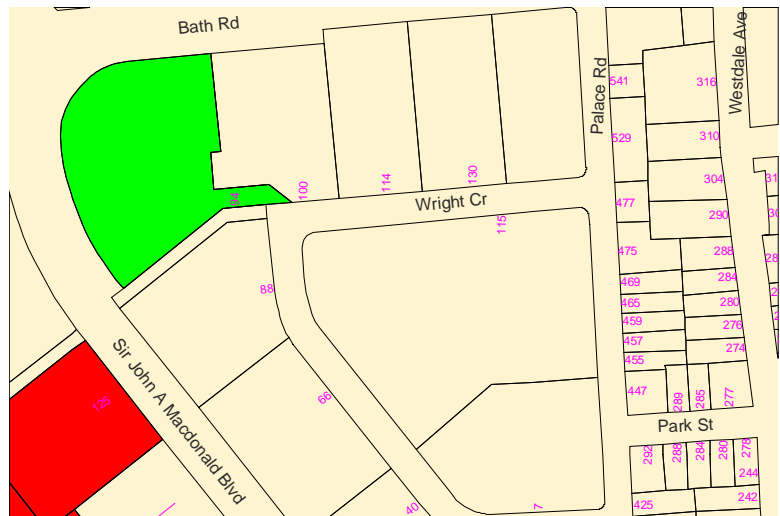
Entrance into the building at 94 Wright Crescent is at sidewalk level via a ramp and barrier free path from parking lot to building entrance which is equipped with a power door operator. All control, safety devices and balcony are wheel chair accessible.

### **Amenities available in the Neighbourhood:**

School 149 m (488.95 ft) – 5.30 km (3.29 mi)  
Shopping 229 m (751.31 ft) – 4.49 km (2.79 mi)

Church 140 m (459.32 ft) – 5.01 km (3.11 mi)  
Hospital 1.38 km (.86 mi) – 2.66 km (1.65 mi)

Public Transportation: please visit <http://www.cityofkingston.ca/residents/transportation/transit/index.asp>



# Marion Community Homes

480 Days Road  
Kingston, ON K7M 7M1

(613) 634-0551

## Housing Project Location: 480 Days Road (Seniors mandate)

### Unit Profile

2 – 1 bedroom units – 1<sup>st</sup> & 2<sup>nd</sup> floor (1 unit Federal & 1 unit Rent Supplement)  
1 fully modified – 2 bedroom unit

Market Rent cost – please contact housing provider directly. For rent-geared-to-income assistance please contact The Social Housing Registry of Kingston and Frontenac.

### Occupancy Standards – approved by the City of Kingston (refer to the attachment)

Modifications	Entrance	Living Room	Bedroom	Storage/ Utility /Laundry	Kitchen	Bathroom
Wheel chair adjusted heights					X	X
Wheel chair accessible path and doors	X				X	
Non-slip floors						
Accessible control devices (lowered switches/outlets)						
Accessible shelves/countertops					X	X
Grab bars ( 1 raised toilet seat)						

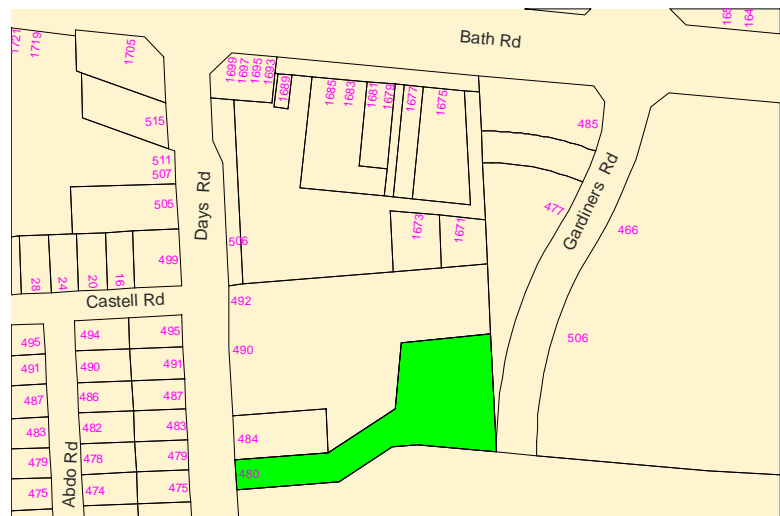
Entrance into the building at 480 Days Road is at sidewalk level and barrier free path from parking lot to building entrance which is equipped with a power door operator with guardrails in the corridors. All control, safety devices and balcony are wheel chair accessible.

### **Amenities available in the Neighbourhood:**

School 640 m (2099.74 ft) – 6.84 km (4.25 mi)  
Shopping 136 m (446.19 ft) – 4.19 km (2.60 mi)

Church 107 m (351.05 ft) – 6.32 km (3.98 mi)  
Hospital 3.63 km (2.26 mi) – 6.18 km (3.84 mi)

Public transportation: please visit <http://www.cityofkingston.ca/residents/transportation/transit/index.asp>



# Royal Canadian Legion Villa

671 Princess Street  
Kingston, ON K7L 1E6

(613) 544-2008

## Housing Project Location: 671 Princess Street (Seniors mandate)

### Unit Profile

1 – 1 bedroom unit – 1<sup>st</sup> floor

1 – 2 bedroom unit – 1<sup>st</sup> floor

Market Rent cost – please contact housing provider directly. For rent-geared-to-income assistance please contact The Social Housing Registry of Kingston and Frontenac.

**Occupancy Standards** – local occupancy standards approved by the City of Kingston (refer to the attachment)

Modifications	Entrance	Living Room	Bedroom	Storage/ Utility /Laundry	Kitchen	Bathroom
Wheel chair adjusted heights	X					X
Wheel chair accessible path and doors	X					
Non-slip floors	X	X	X	X	X	X
Accessible control devices (lowered switches/outlets)			X		X	X
Accessible shelves/countertops			X	X	X	X
Grab bars (2 bedroom unit has a roll in shower)						X

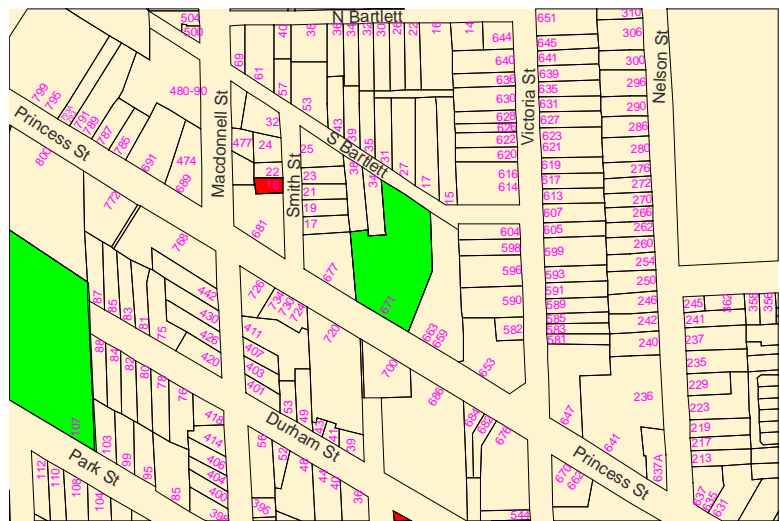
Entrance into the building at 670 Princess Street is via a ramp and barrier free path from parking lot to building entrance which is equipped with a power door operator. All control and safety devices are wheel chair accessible.

### **Amenities available in the Neighbourhood:**

School 338 m (1108.92 ft) – 5.78 km (3.59 mi)  
Shopping 940 m (3083.99 ft) – 5.59 km (3.47 mi)

Church 134 m (439.63 ft) – 5.91 km (3.67 mi)  
Hospital 1.64 km (1.02 mi) – 2.93 km (1.82 mi)

Public Transportation: please visit <http://www.cityofkingston.ca/residents/transportation/transit/index.asp>



# Loughborough Housing Corporation

4377 William Street (The Mapleridge)  
 Sydenham, ON K0H 2T0

(613) 376-3686

## Housing Project Location: 4377 William Street (Seniors mandate)

### Unit Profile

2 – 1 bedroom units – 1<sup>st</sup> floor

Market Rent cost – please contact housing provider directly. For rent-geared-to-income assistance please contact The Social Housing Registry of Kingston and Frontenac.

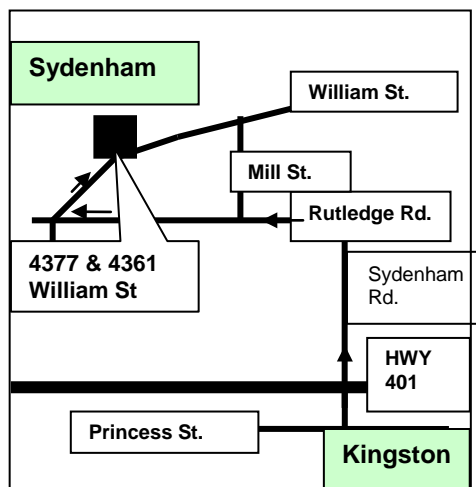
**Occupancy Standards** – approved by the City of Kingston (refer to the attachment)

Modifications	Entrance	Living Room	Bedroom	Storage/ Utility /Laundry	Kitchen	Bathroom
Wheel chair adjusted heights					X	X
Wheel chair accessible path and doors	X	X	X		X	X
Non-slip floors						
Accessible control devices (lowered switches/outlets)		X	X		X	X
Accessible shelves/countertops					X	X
Grab bars						X

Entrance into the building at 4377 William Street is at street level and a ramp is available and barrier free path from parking lot to building entrance. All control, safety devices and balcony are wheel chair accessible.

### **Amenities available in the Neighbourhood:**

**School** High and Public school located at Bridge St. and Wheatley St.    **Church** located at Mill St. and Amelia Street  
**Shopping** Bank, Drugstore located at George St. and Mill St.    **Dentist and Doctors** clinic are located south of the village  
**Public Transportation:** Not available



**NOTE:** Distance is 25 km north of HWY 401 or approximately 0.5 hour.

# Loughborough Housing Corporation

4361 William Street (The Meadowbrook)  
 Sydenham, ON K0H 2T0

(613) 376-3686

## Housing Project Location: 4361 William Street (Seniors mandate)

### Unit Profile

1 bedroom units – 1<sup>st</sup> floor

Market Rent cost – please contact housing provider directly. For rent-geared-to-income assistance please contact The Social Housing Registry of Kingston and Frontenac.

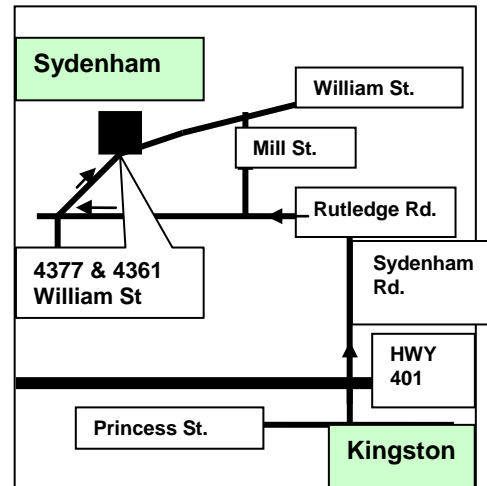
### Occupancy Standards – approved by the City of Kingston (refer to the attachment)

Modifications	Entrance	Living Room	Bedroom	Storage/ Utility /Laundry	Kitchen	Bathroom
Wheel chair adjusted heights					X	X
Wheel chair accessible path and doors	X	X	X		X	X
Non-slip floors						
Accessible control devices (lowered switches/outlets)		X	X		X	X
Accessible shelves/countertops					X	X
Grab bars						X

Entrance into the building at 4361 William Street is at street level. All control, safety devices and balcony are wheel chair accessible.

### **Amenities available in the Neighbourhood:**

**School** High and Public school located at Bridge St. and Wheatley St. **Church** located at Mill St. and Amelia Street **Shopping** Bank, Drugstore located at George St. and Mill St. **Dentist and Doctors** clinic are located south of the village **Public Transportation:** Not available



**NOTE:** Distance is 25 km north of HWY 401 or approximately 0.5 hour.

# North Frontenac Non-Profit Housing Corporation

P.O. Box 275,  
Sharbot Lake, ON K0H 2P0

(613) 279-3322

## Housing Project Location: - 14812 Hwy 38, Sharbot Lake

### Unit Profile

1 – 2 bedroom unit – semi-detached – single storey

Market Rent cost – please contact housing provider directly. For rent-geared-to-income assistance please contact The Social Housing Registry of Kingston and Frontenac.

**Occupancy Standards** – approved by the City of Kingston (refer to the attachment)

Modifications	Entrance	Living Room	Bedroom	Storage/ Utility /Laundry	Kitchen	Bathroom
Wheel chair adjusted heights		X	X	X	X	X
Wheel chair accessible path and doors	X	X	X	X	X	X
Non-slip floors						
Accessible control devices (lowered switches/outlets)	X	X	X	X	X	X
Accessible shelves/countertops				X	X	X
Grab bars						X

Entrance into the building located at 14812 Hwy 38 is by ramp and barrier free path from parking lot. All controls and safety devices are wheel chair accessible.

### **Amenities available in the Neighbourhood:**

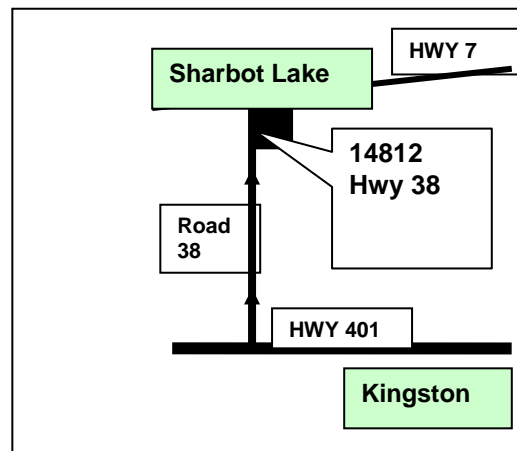
**Convenience Store** 45.72 m (150 ft)

**Gas Station** 54.86 m (179.99 ft)

**Mall** (Pet Food, Clothing, Beauty Parlor, Veterinarian, and Chiropractic) 27.43 m (89.99 ft)

Bank, Post Office, Grocery, Medical & Dental Clinic, High School, Public School 2.41 km (1.5 miles South)

**No Public Transportation**



**NOTE:** Distance is 40 km north of HWY 401 or approximately 1 – 1.5 hours.

# Town Homes Kingston

37 Cassidy Street Unit 222  
 Kingston, ON K7K 7B3

(613) 542-0443

## Housing Project Location: 2075 Battersea Road, Glenburnie (Seniors mandate)

### Unit Profile

2 – 1 bedroom units

1 – 2 bedroom units

Market Rent cost – please contact housing provider directly. For rent-geared-to-income assistance please contact The Social Housing Registry of Kingston and Frontenac.

**Occupancy Standards** – provider applies Occupancy Standards for Special Needs approved by their Board – Please contact housing provider directly.

Modifications	Entrance	Living Room	Bedroom	Storage/ Utility /Laundry	Kitchen	Bathroom
Wheel chair adjusted heights	X	X	X	X	X	X
Wheel chair accessible path and doors	X	X	X	X	X	X
Non-slip floors						
Accessible control devices (lowered switches/outlets)	X	X	X	X	X	X
Accessible shelves/countertops					X	X
Grab bars						X

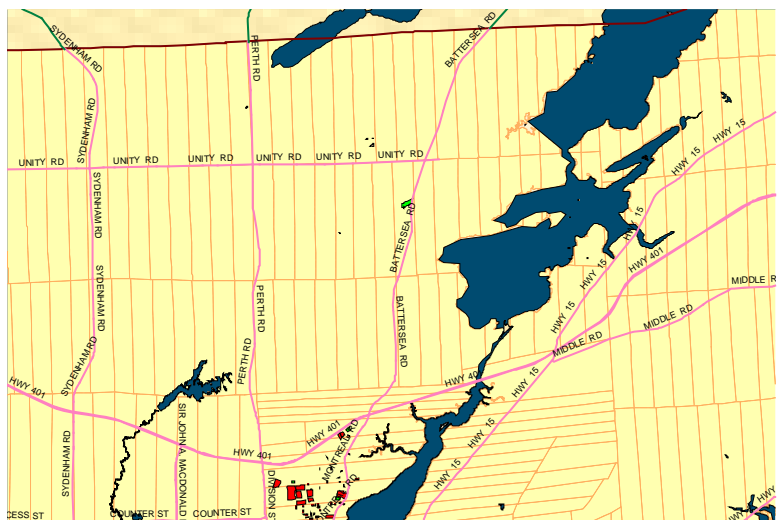
Entrance into the building at 2075 Battersea Road is at street level via a ramp and barrier free path from parking lot into building entrance which is equipped with power door operator and guardrails provided in corridors. All safety devices and controls and balcony are wheel chair accessible.

### **Amenities available in the Neighbourhood:**

School 3.22 km (2.00 mi) – 12.8 km (7.95 mi)  
 Shopping 7.19 km (4.47 mi) – 9.72 km (6.04 mi)

Church 3.75 km (2.33 mi) – 13.9 km (8.64 mi)  
 Hospital 8.44 km (5.24 mi) – 10.1 km (6.28m mi)

### **No Public transportation**



## 5. Attachments

### **Attachment #1 – Local occupancy standards**

**Occupancy standards are used to determine the size of RGI unit, which the household is eligible for.**

Under the provincial and local occupancy standards you may be eligible for the largest unit or the smallest unit.

The largest unit a household is eligible for is defined as:

- One Bedroom for any 2 members of the household who are spouses/same sex partners
- One Bedroom for each additional member

The smallest unit a household is eligible for is defined as:

- One bedroom for every two members of the household
- An additional bedroom if there is an odd number of members of the household
- If the household consists of one individual or two individuals who are spouses or same-sex partners, the smallest unit the household is eligible for is bachelor unit.

If agreed to by the household and if there are no medical restrictions, two children may share a bedroom in the smallest unit. In this case the size of the bedroom must be no less than six feet wide and floor area must be no less than 40 sq. ft. for each person. Separate bedrooms must be assigned to children of the opposite sex over the age of 5. Foster children are included into family composition.

The Local Occupancy Chart shows some examples on how occupancy standards are applied with respect to the family composition, minimum unit size, and definition of the largest and the smallest unit.

You may also request an additional bedroom(s) under local occupancy standards in the following cases:

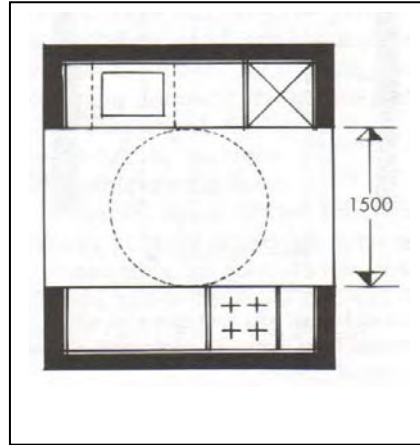
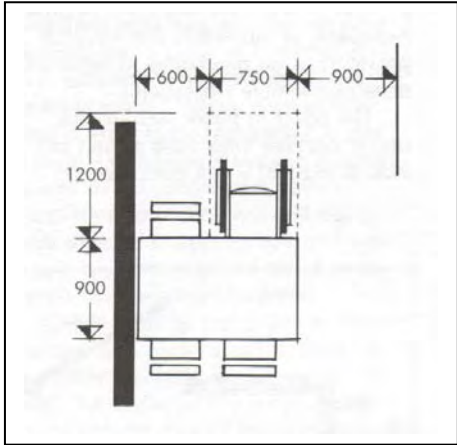
1. if one of the spouses or same-sex partners requires a separate bedroom because of a disability or medical condition
2. if the room is required to store equipment required by a member of the household because of a disability or medical condition
3. if the bedroom is required to accommodate an individual who is not a member of the household and who provides a member of the household with support services that are required because of the member's disability or medical condition
4. if a member of the household is pregnant
5. if a member of the household has joint custody over a child who is not a member of the household and the member is required to provide accommodation for the child, and the bedroom is required to accommodate the child
6. if a member of the household has visiting rights with respect to a child who is not a member of the household and it is a condition that the member must provide adequate accommodation for the child when the child stays overnight with the member, and the child will stay overnight with the member frequently, and the bedroom is required to accommodate the child
7. to accommodate a foster child.

Eligibility for additional bedroom will be determined under the occupancy standards only if the household requests it and provides supporting documents.

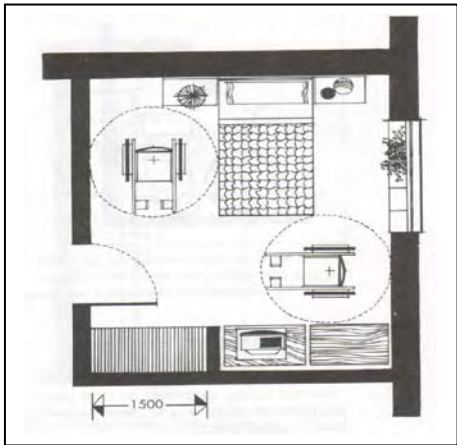
**Attachment #2**

**Canada Mortgage and Housing Corporation (CMHC)  
illustrations of typical accessibility modifications for a  
wheelchair user** (Reference: CMHC, Housing for Persons with Disabilities)

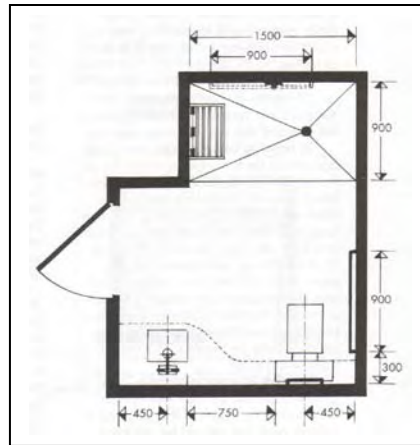
**Dining Area and Kitchen**



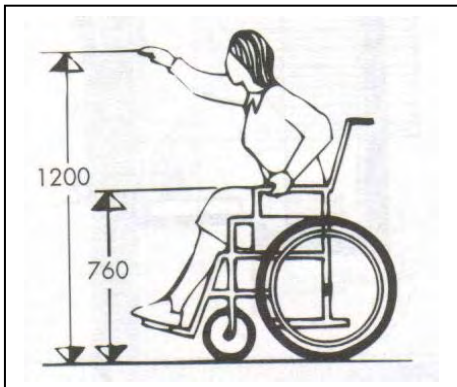
**Bedroom**

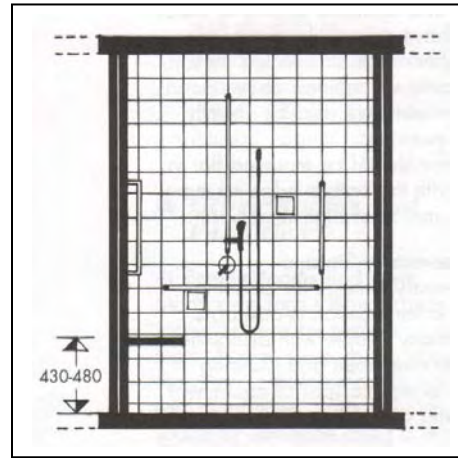
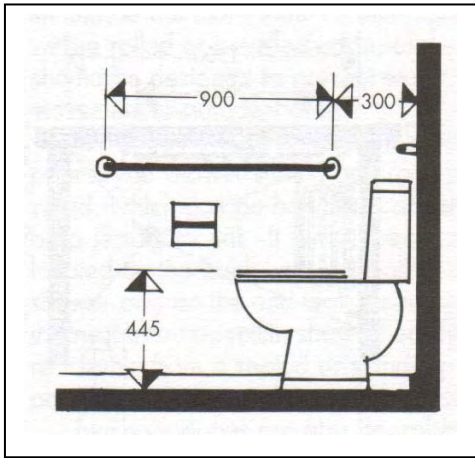
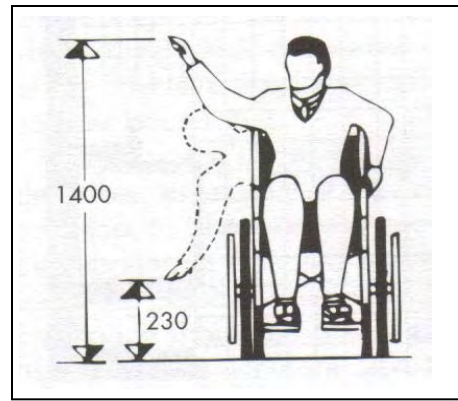
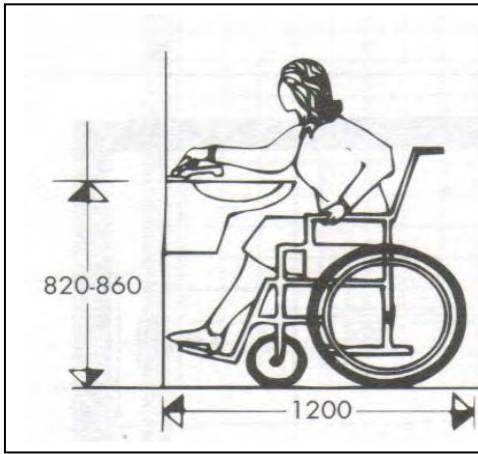


**Bathroom**



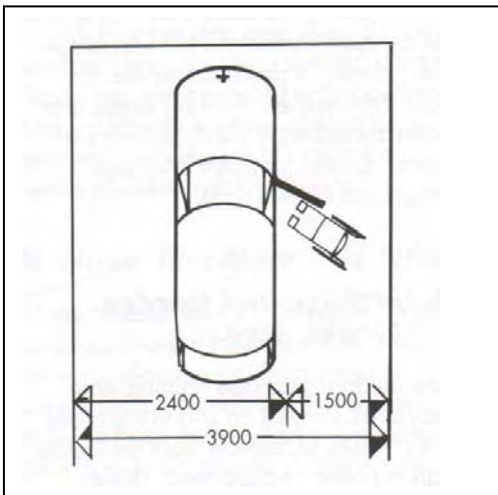
**Adjusted heights for a wheelchair user**





Barrier – Free Pathways

Parking



Ramp

