

CITY OF KINGSTON ENVIRONMENTAL ASSESSMENT: THIRD CROSSING OF THE CATARAQUI RIVER

HERITAGE SURVEY

October 23, 2009



Laurie J. Smith, M.A., LL.B., CAHP

Heritage Consultant

4 Bullock Avenue, Ottawa, Ontario K1S 1G8

Tel. (613) 236-8582 Cell (613) 863-8852

lauriesmithheritage@sympatico.ca

TABLE OF CONTENTS

Table of Contents.....	2
Introduction.....	3
Identified Heritage Properties in the Environmental Assessment Study Area.....	4
Rideau Canal.....	4
East of the Cataraqui River.....	5
West of the Cataraqui River.....	8
Protected Views.....	10
Potential Heritage Properties in the Environmental Assessment Study Area.....	12
Estuary of the Cataraqui River.....	12
East of the Cataraqui River.....	13
West of the Cataraqui River.....	14
Heritage Constraints.....	17
Appendix A - Locator Map: Identified Heritage Properties.....	18
Appendix B - Locator Map: Potential Heritage Properties.....	19
Appendix C – Identified Heritage Properties.....	20
Appendix D - Potential Heritage Properties.....	29
Appendix E – Types of Heritage Identifications.....	32

INTRODUCTION

This cultural heritage survey has been prepared as part of an environmental assessment to evaluate the need for and feasibility of implementing additional transportation capacity across the Cataraqui River, in the City of Kingston. The study area for the environmental assessment (EA study area) extends along the shoreline and lands adjoining the Cataraqui River, from the LaSalle Causeway-Highway 2 corridor in the south to Highway 401 in the north.

The cultural heritage survey provides information on heritage properties within the EA study area that have been identified by a government authority as having cultural heritage value. Identified heritage properties include designations, commemorations and plaques made by federal, provincial and municipal authorities, as well as plaques erected by non-governmental organizations. A locator map showing identified heritage properties is included as Appendix A. A table listing identified heritage properties, keyed to the map, is included as Appendix C. The different types of cultural heritage identifications are outlined in Appendix E. The cultural heritage survey does not deal with archaeological resources, or with natural heritage resources.

The cultural heritage survey also provides information on properties and areas within the EA study area that may potentially have cultural heritage value, but have not yet been evaluated or identified by a government authority. A locator map showing potential heritage properties and areas is included as Appendix B. A table listing potential heritage properties and areas, keyed to the map, is included as Appendix D.

The tables in appendices C and D indicate the geographical extent of heritage value. In most cases, the heritage designation or commemoration applies only to the legal limits of the property (or in the case of federal heritage buildings, to the footprint of the building itself). However, in a few cases, the heritage designation or commemoration also protects or commemorates views to and/or from the property, or considers the property as part of a larger group. The impact of the 2005 Provincial Policy Statement (PPS) should also be considered. The PPS directs provincial decision makers (including municipal councils) to consider the impact of proposed projects on adjacent heritage properties.

The cultural heritage survey of the EA study area was carried out by Laurie Smith, Heritage Consultant, between 1 April and 1 July 2009. Laurie Smith is a member of the Canadian Association of Heritage Professionals. Information necessary to complete the survey was provided by the following government authorities:

- City of Kingston (for municipally designated and listed properties; municipal easements; heritage conservation districts; potential heritage properties; and heritage provisions in the official plans);
- Ontario Heritage Trust (OHT) (for OHT properties and provincial easements);
- Ontario Realty Corporation (ORC) (for provincially-owned heritage properties);
- Parks Canada, Historic Sites and Monuments Board Directorate (for national historic sites, persons and events; heritage railway stations; and world heritage site); and
- Parks Canada, Federal Heritage Buildings Review Office (FHBRO) (for classified and recognized federal heritage buildings).

At the time of writing, the new City of Kingston Official Plan (2009) had been adopted by City Council, but not yet approved by the Ministry of Municipal Affairs and Housing. This survey includes reference to heritage provisions in the 2009 Official Plan, with provisions in the existing plans footnoted where applicable.¹

Research on the history of the City of Kingston and the former Pittsburgh Township, and on additional commemorative plaques in the EA study area, was conducted at the Library and Archives of Canada and the Queen's University Archives.

Site visits of the EA study area were carried out by Laurie Smith on May 29 and 31 and June 1 and 18, 2009. On the last site visit Laurie Smith was accompanied by Manuel Stevens of the assessment team, and by Marcus Létourneau and Katrina Guy of the City of Kingston.

¹ The City of Kingston Official Plan (2009) was adopted by City Council on July 15, 2009. Approval by the Ministry was expected to be completed, and the plan in effect, by the end of September, 2009.

IDENTIFIED HERITAGE PROPERTIES IN THE ENVIRONMENTAL ASSESSMENT STUDY AREA

Identified heritage properties in the EA study area are indicated on the Locator Map in Appendix A. A table listing these properties is provided as Appendix C. Identified Heritage Properties include designations, commemorations, plaques and other types of formal heritage identifications made by federal, provincial and municipal bodies, as well as plaques erected by non-governmental organizations. The different types of cultural heritage identifications are outlined in Appendix E.

Rideau Canal

The most significant identified heritage property in the EA study area is the Rideau Canal. Originally built between 1826 and 1832, it is a UNESCO World Heritage Site (recognized 2005), a National Historic Site (recognized 1924) and a Canadian Heritage River (recognized 2005). Within the EA study area, the designated site of the canal (for all three designations) begins at Belle Island, and follows the high-water marks on either shore, north to beyond the limits of the EA study area. The Rideau Canal is managed by Parks Canada according to management plans that conserve its heritage values.²

The World Heritage Site designation includes the Kingston fortifications as well as the Canal.³ The EA study area includes three elements of the World Heritage site: the Rideau Canal, Fort Henry, and the Fort Frederick Martello Tower. All three are also recognized as national historic sites. Parks Canada is responsible for managing the heritage value of these sites.⁴

The *Rideau Canal World Heritage Site Management Plan* prohibits activities that would alter the size, shape, depth or configuration of the slackwater sections of the canal; requires that new bridge and public utilities crossing proposals include detailed environmental assessments; and requires Parks Canada to work with municipalities to maintain a 30-metre buffer zone for new shoreline construction along slackwater sections of the canal.⁵ Each component of the World Heritage Site is managed using Parks Canada national historic site management plans.

The *Rideau Canal National Historic Site Management Plan* identifies elements which must be safeguarded to ensure the maintenance of the canal's heritage value, including: continued through-navigation of the canal system; view sheds and visual linkages in the Kingston harbour landscape that portray the relationship between the fortifications, the harbour and the canal; cultural resources of the military period; the heritage character of corridor shore lands and identified corridor communities; and the landmarks, viewsapes and natural ecosystem features of the canal's islands, shore lands and wetlands that are related to the construction of the canal and which are part of the canal's unique historical environment.⁶ With respect to potential crossings of the canal, the *Rideau Canal National Historic Site Management Plan* provides: "Parks Canada will seek to ensure that any new transmission line, pipeline and bridge crossings are located, designed and constructed to have the least impact on the natural, historic and scenic values of the Canal. Proponents must show a clear requirement for such a crossing."⁷

² The new *City of Kingston Official Plan (2009)* also sets out policies to protect the heritage values of the Canal.

³ The Kingston fortifications are comprised of Fort Henry and the four Martello Towers: Fort Frederick, Murney, Shoal and Cathcart.

⁴ Rideau Canal National Historic Site of Canada, Kingston Fortifications National Historic Site of Canada, Fort Henry National Historic Site of Canada; Parks Canada, *Rideau Canal World Heritage Site Management Plan*, 2005, p. 15.

⁵ Parks Canada, *Rideau Canal World Heritage Site Management Plan*, 2005, p. 17 and 23.

⁶ Parks Canada. *Rideau Canal and Merrickville Blockhouse National Historic Sites of Canada, Commemorative Integrity Statement*, August 2000, pp. 4, 8.

⁷ Parks Canada. *Rideau Canal National Historic Site of Canada Management Plan*, 2005, p. 31.

Once in effect, the *City of Kingston Official Plan (2009)*⁸ will include policies to recognize and protect the heritage values of the Rideau Canal and the Kingston fortifications, integrating measures set out in the World Heritage Site and National Historic Site management plans. This will include: the identification and protection of associated cultural heritage landscapes and built heritage resources; ensuring that development adjacent to or over the Canal does not interfere with safe and efficient navigation on the Canal; prohibiting development or site alteration that would alter the size, shape and configuration of the canal system; requiring that development or site alteration on adjacent lands demonstrate the conservation of cultural heritage resources; and requiring that new bridge or public utilities crossings undertake satisfactory environmental assessments.⁹ With respect to the Kingston fortifications, the City's proposed Official Plan protects cultural heritage landscapes, including the fields of fire of Fort Henry; and protects views from Fort Henry and between the component fortifications.¹⁰

The *City of Kingston Secondary Plan for the Rideau Community* provides planning direction for the area on the east side of the Cataraqui River, north of Canadian Forces Base Kingston. One goal of the Secondary Plan is to recognize and protect the cultural heritage resource significance of the Rideau Canal as a UNESCO World Heritage Site. In large part, this is achieved through maintaining views of the river. Development guidelines for the Village Centre (southeast corner of Gore Road and Kingston Road 15) require that views to the Cataraqui River from Kingston Road 15 be maintained and enhanced. Development guidelines for the Kingston Marina area require that views of the Cataraqui River and City of Kingston skyline, as well as views from the water to the land, be maintained wherever feasible. Development guidelines for the Open Space areas require that public views from streets leading toward the Cataraqui River be protected through road alignments and extensions, the siting of buildings and structures, and parkland dedications. The land north of Gore Road, between the river and Kingston Road 15, and extending north to include the quarry, is planned as a Special Study Area. The plan prioritizes the development of a riverfront park with a scenic drive in this area. Views from the scenic drive to the Cataraqui River and Kingston skyline will be provided along its full length. In addition, the existing scenic quality of Kingston Road 15 will be maintained.¹¹

East of the Cataraqui River

The EA study area east of the Cataraqui River extends from Highway 401 southward to Point Henry and Point Frederick, and eastward to the far side of Kingston Road 15. It includes three major identified heritage sites: Barriefield; Fort Henry; and the Royal Military College. It also includes several identified properties at CFB Kingston on the east side of Kingston Road 15, and several municipally designated sites on both sides of Kingston Road 15, north of its intersection with Gore Road.

The Barriefield Conservation District (Figure 1) was one of the first heritage conservation districts to be designated in Ontario.¹² The village was laid out in 1814 and mostly developed over the course of the 19th century. The district encompasses the entire village, including buildings, landscape features, topography and archaeological sites and resources. Buildings are not individually designated, but are protected as elements of the district. Management of the district is governed by a Conservation Plan. Goals of the Conservation Plan include maintaining the low density residential profile of the village, avoiding destruction of its built and landscape fabric; and maintaining and preserving its heritage buildings, village landscape character, natural features such as the Cataraqui River banks, built landscape features, roads and streetscapes.¹³ The Statement of Significance for Barriefield Heritage Conservation District identifies the views from the village towards the Cataraqui and St. Lawrence rivers, Fort Henry and downtown Kingston; and the visibility and prominence of St. Mark's Church (built 1844) as character-defining elements of the district.¹⁴

⁸ The new *City of Kingston Official Plan (2009)* was adopted by City Council 15 July 2009. As of the date of writing, it had been submitted to the Minister for approval, but was not yet in effect.

⁹ *City of Kingston Official Plan* (adopted 2009), s. 7.3.A.1, p. 217.

¹⁰ *City of Kingston Official Plan* (adopted 2009), s. 7.3.A.2, pp. 217-8.

¹¹ *City of Kingston Official Plan* (adopted 2009), Rideau Community Secondary Plan, s. 10B.o, 10B4.16, 10B.6.1, 10B.7f, 10B.7.2, 10B.10, 10B.13.3 and s. 10B13.6.

¹² Designated in 1979 by the former Pittsburgh Township.

¹³ *Kingston Official Plan (Recommended DRAFT 2009)*, s. 7.3.C.7, p. 219-20.

¹⁴ "Barriefield Heritage Conservation District," Statement of Significance, Canadian Register of Historic Places. Heritage Values: "Views from the approaches along Kingston Road 15 to the north, Highway 2 to the east and downtown Kingston

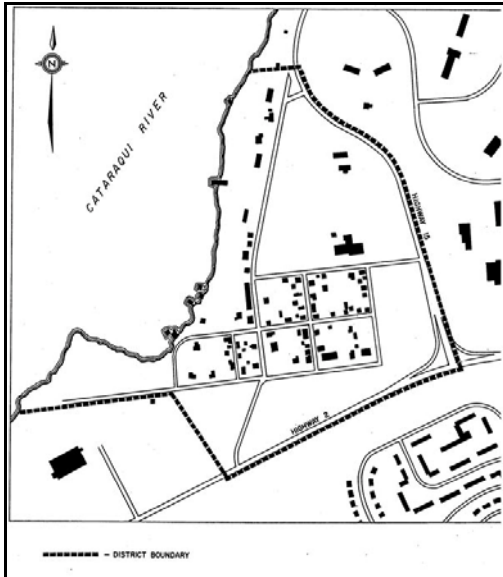


Figure 1 – Barriefield Heritage Conservation District. Boundary is indicated by the broken line. (Source: City of Kingston, Barriefield Revised Heritage Conservation District Plan, 1992)

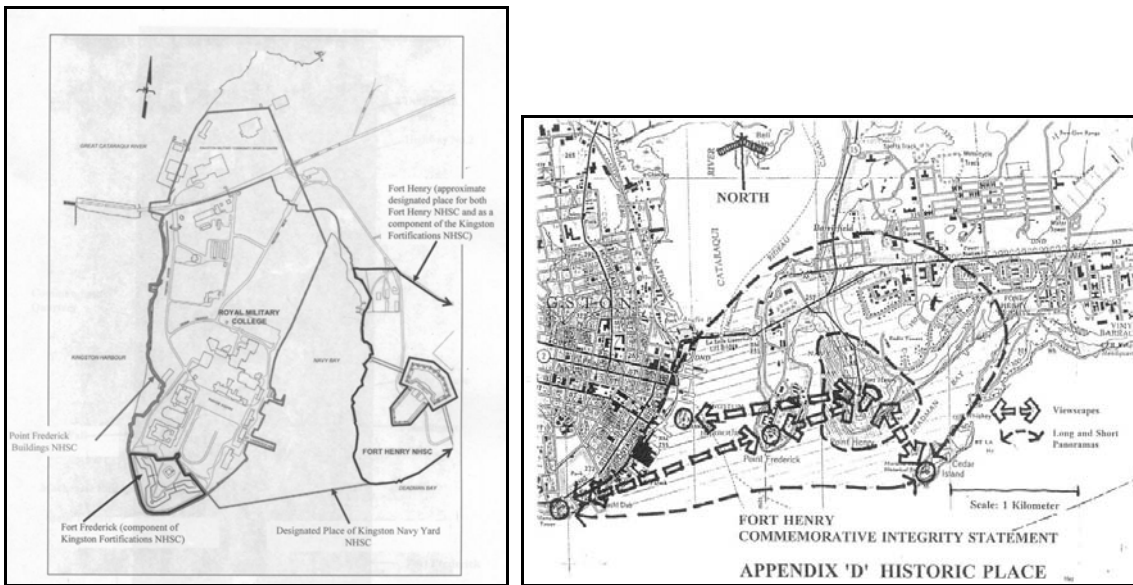


Figure 2 – At left, the overlapping boundaries of Point Frederick Buildings NHSC, Kingston Navy Yard NHSC, the Fort Frederick component of Kingston Fortifications NHSC, and Fort Henry NHSC. At right, the boundaries (inner circle) and protected views (outer circle and arrows) of Fort Henry NHSC. (Sources: Parks Canada. Fort Henry NHSC CIS, 1996; and Parks Canada. Kingston Navy Yard and Point Frederick Buildings NHSC, DRAFT CIS, 2007)

to the west, all afford uninterrupted panoramic views of Barriefield, as it sits prominently upon the hill. As well Barriefield's position provides clear views of the Cataraqui and St. Lawrence rivers, Fort Henry and downtown Kingston. Large grassy spaces on the north, east and south sides preserve these vistas.



Figure 3 – Cataraqui Grange (#1412, at left) and Tymparon Inn (#1403, at right) are municipally designated heritage properties on Kingston Road 15. (Source: L. Smith, 2009)

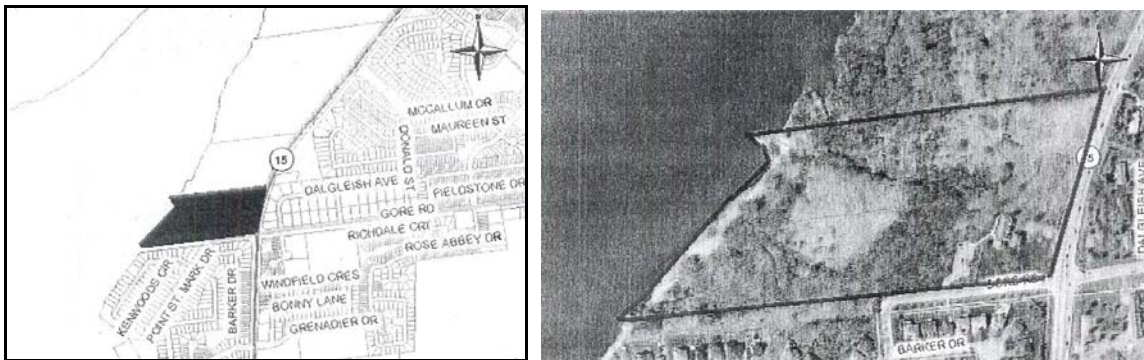


Figure 4 – 80 Gore Road. Dry stone wall and library addition (upper left); stone farmhouse c1866 (upper right); map showing location (lower left); and aerial photo showing boundaries (lower right). (Source: L. Smith, 2009; and City of Kingston, By-law 2007-166)

Fort Henry and Royal Military College comprise many overlapping designations, including a portion of the UNESCO World Heritage Site, four national historic sites (Fort Henry NHSC, Point Frederick Buildings NHSC, Navy Bay NHSC and Kingston Fortifications NHSC; Figure 2), 35 federal heritage buildings, and numerous plaques erected by federal, provincial, municipal and private authorities. The heritage value of these sites includes important viewsapes between the various sites, and to and from other significant landmarks, such as Kingston Harbour, City Hall and Barriefield.

At Canadian Forces Base Kingston, on the east side of Kingston Road 15, there are three recognized federal heritage buildings dating to the 1950s (Lewis Hall, Sherman Hall and Health Services Clinic), as well as a memorial entrance comprised of a Sherman tank, a 25-pounder gun, and bronze plaques on stone

walls. The federal heritage building designations are limited to the footprint of each building. The contextual value of these buildings is restricted to their relationship with other buildings on CFB Kingston.

Three 19th-century farmhouses along Kingston Road 15 have been municipally designated: Cataraqui Grange (built c1830); Tymparon Inn (built c1865; also known as Baxter House); and Hawthorn Cottage (built 1866; now the Kingston Frontenac Public Library, Pittsburgh Branch) (Figure 3 and Figure 4). All three are located in the section of Kingston Road 15 between Gore Road and Highway 401. Although the designations for the Tymparon Inn and Cataraqui Grange extend to the legal limits of the properties, the heritage resources identified in the designations are limited to the houses themselves.

The Pittsburgh Branch of the Kingston Frontenac Public Library is a former farmhouse located on a 7.2-hectare property at the northwest corner of Gore Road and Kingston Road 15.¹⁵ It was acquired by the City of Kingston in 1997 and designated in 2007. The cultural heritage value of the property lies in its physical and design values, its historical associations with several families and individuals who were prominent in the former Pittsburgh Township, and its contextual value as a community resource and landmark on Kingston Road 15. Character-defining features of the property include: the exterior and interior of the stone farmhouse (built 1866); a traditional dry stone wall; evidence of historic garden and agricultural activities (including the remains of a formal garden, a barn, a barn foundation, old agricultural implements, and former orchards); its role as a landmark on Kingston Road 15; its role as a library and community centre; and its scenic pathways with views of the Cataraqui River section of the Rideau Canal World Heritage Site. The designation by-law emphasizes that the property: “Is of cultural heritage value not only because of its collection of distinctive attributes, but as a coherent whole property.”¹⁶ Although the designation covers the entire property, identified heritage resources are for the most part clustered on the upper plateau area, along Gore Road and Kingston Road 15. Some heritage features, such as the dry stone wall and garden remnants, may lie within the road allowance for Gore Road.¹⁷ The property also contains a stone marker with bronze plaques erected by the Pittsburgh Township Historical Society.¹⁸

West of the Cataraqui River

On the west side of the Cataraqui River, the EA study area is defined as extending from Queen Street at the south end to Highway 401 at the north end, and west from the Cataraqui River to include properties along both sides of Montreal Street. The south end has a significant number of designations, including Fort Frontenac National Historic Site, federal heritage buildings at Fort Frontenac and the LaSalle Causeway, and many municipal designations in the downtown area bounded by Ontario, Queen, Montreal and North streets. The north end (north of North Street) has comparatively few identified heritage properties: the City of Kingston has designated five properties (one is also a Heritage Railway Station) and listed six properties (Figure 5 and Figure 6).

The entire LaSalle Causeway with its bascule bridge (opened 1917) is listed by the City of Kingston in its heritage inventory. The Bridge Office and Shop (built 1947/48) is a recognized federal heritage building. The bridge itself is owned by the federal government and managed by Public Works and Government Services Canada (PWGSC). PWGSC does not yet have a program in place for recognizing significant cultural landscapes or heritage structures that are not buildings.¹⁹

Fort Frontenac refers to both the archaeological remains of the 17th century French fort (Fort Frontenac National Historic Site), and the present-day Department of National Defence barracks (formerly Tête du Pont

¹⁵ Part of Lot 10, Concession EGCR, former Pittsburgh Township.

¹⁶ Statement of Cultural Heritage Value or Significance, Schedule “A” – Description and Reasons for Designation, 80 Gore Road (914 Kingston Road 15), City of Kingston By-law No. 2007-166.

¹⁷ Shirley Bailey, Senior Planner for the City of Kingston, advises that the road allowance in Registered Plan 1945 (Woods Landing Phase 1) and Registered Plan 1953 (Woods Landing Phase 2) is set at 26 metres. The Official Plan for the Former Township of Pittsburgh provides for a 36.5-metre roadway for a bridge at Gore Road (s. 4A.2.6, “Third Crossing of the Great Cataraqui River”). The Kingston Transportation Master Plan contemplates a two-lane bridge plus bicycle lanes and sidewalks (p. 59).

¹⁸ Site visit 29 May 2009.

¹⁹ The Federal Heritage Buildings (FHBRO) program only recognizes buildings. The only mechanism available for federally-owned non-building structures and landscapes is national historic site commemoration. The Bascule Bridge at Smith’s Falls was commemorated as a national historic site in 1994, making it unlikely (although not impossible) that the Kingston Bascule Bridge would be similarly commemorated.

Barracks) that occupy part of the same site, at the eastern end of Ontario Street. Parks Canada is currently engaged in defining the boundaries of Fort Frontenac National Historic Site. The Department of National Defence Barracks is not designated as a whole, but it contains seven federal heritage buildings and six plaques erected by federal, provincial and local authorities as well as private organizations.



Figure 5 – Municipally designated heritage properties on the west side of the river include: the former Kingston Woolen Mill (upper left); the Old Imperial Oil building (upper right); the Railway Terrace (lower left); and the Depot School (lower left). (Source: L. Smith, 2009)

Within the area bounded by Ontario, Queen, Montreal and North streets there are 45 identified heritage properties, including municipal listings and designations, plaques erected by various government authorities and private organizations, and a federal heritage building. Well-known heritage properties from the 18th, 19th and early 20th centuries, such as the Kingston Armouries, Wellington Terrace, St. Paul's Anglican Church and burial ground, Cataraqui School, and the Wellington Street Brewery (also known as the Bajus Brewery) are located here, as well as many private, stone houses dating to the early 19th century. The area also contains plaques commemorating Sir John A. Macdonald, Molly Brant and local battalions.

In the large area north of North Street, identified properties include the old stone Imperial Oil building (9 North Street), the Woolen Mill (2-6 Cataraqui Street), the stone Depot School (610 Montreal Street), the Grand Trunk Railway Station property with its stone and brick station buildings (810 Montreal Street) and the stone Grand Trunk Railway Terrace (1-5 Cassidy Street). The city has also listed stone houses on Bagot Street, Montreal Street, Rideau Street and John Counter Boulevard (west of Montreal Street).



Figure 6 – Heritage properties listed by the City of Kingston include the former GTR/CNR station (at left, also a Heritage Railway Station), and the former farmhouse at 760 John Counter Boulevard. (Source: L. Smith, 2009)

Protected Views

In certain cases, heritage protection extends beyond the boundaries of the site to include views to and from the heritage site, or between related heritage sites. Within the EA study area, protected views are identified in Parks Canada management documents for the Rideau Canal World Heritage Site and several national historic sites, the Barriefield Conservation District Plan, municipal designations, and the City of Kingston official plans (existing and 2009) (Figure 7 and Figure 8).²⁰ They include:

- Viewscapes between the various Kingston Fortifications (Fort Henry and Fort Frederick, Murney, Shoal and Cathcart Martello Towers) and between each fortification and Kingston Harbour;²¹
- Views of the Rideau Canal from the city-owned property at 80 Gore Road;²²
- Viewscapes from Barriefield towards the Cataraqui and St. Lawrence rivers, Fort Henry and downtown Kingston;²³
- Views of St. Mark's Church from a distance;²⁴
- Views from Molly Brant Point (Woolen Mill, 2-8 Cataraqui Street) to City Hall and to the Cataraqui River;²⁵
- Views from Barrack and Queen streets to the Harbour;²⁶
- Views of City Hall cupola from the LaSalle Causeway and Royal Military College;²⁷
- Viewscapes across the Inner Harbour between Kingston and Barriefield;²⁸ and

²⁰ *City of Kingston Official Plan* (adopted 2009), ss. 3.9, 7.1.12, 10A.1.5, 10A.2.16, 10A.4.8, 20A.4.9 and Schedules 9 and DH-4.

²¹ Parks Canada, *Rideau Canal and Merrickville Blockhouse NHSC Commemorative Integrity Statement*, August 2000; Parks Canada, *Rideau Canal NHSC Management Plan*, 2005; and Parks Canada, *Fort Henry National Historic Site Commemorative Integrity Statement*, 1996; Parks Canada, *Kingston Navy Yard and Point Frederick Buildings National Historic Sites of Canada DRAFT Commemorative Integrity Statement*, 4 March 2007.

²² *Reasons for Designation*, City of Kingston, 2007, By-law 2007-166.

²³ *Barriefield Heritage Conservation District Plan*, 1992.

²⁴ *Barriefield Heritage Conservation District Plan*, 1992.

²⁵ *City of Kingston Official Plan*, (1995, as amended to 2006), s. 4.15.4.

²⁶ *City of Kingston Official Plan* (1995, as amended to 2006), s. 4.15.4; and *City of Kingston Official Plan* (adopted 2009).

²⁷ *City of Kingston Official Plan* (1995, as amended to 2006), s. 7.9.3; and *City of Kingston Official Plan* (adopted 2009).

²⁸ *City of Kingston Official Plan* (adopted 2009).

- all development overlooking the Rideau Canal must have regard for its visual impact on the UNESCO World Heritage Designation.²⁹

As well, land use compatibility principles in the adopted *City of Kingston Official Plan (2009)* require that adverse effects be minimized when there is a proposed change in use. Adverse effects can include a “visual intrusion that disrupts the streetscape, building or cultural heritage resource” or “the loss or impairment of significant views of cultural heritage resources”.³⁰



Figure 7 – Protected views of the city from Barriefield (left) and the Inner Harbour from the city (right). (Source: L. Smith, 2009)

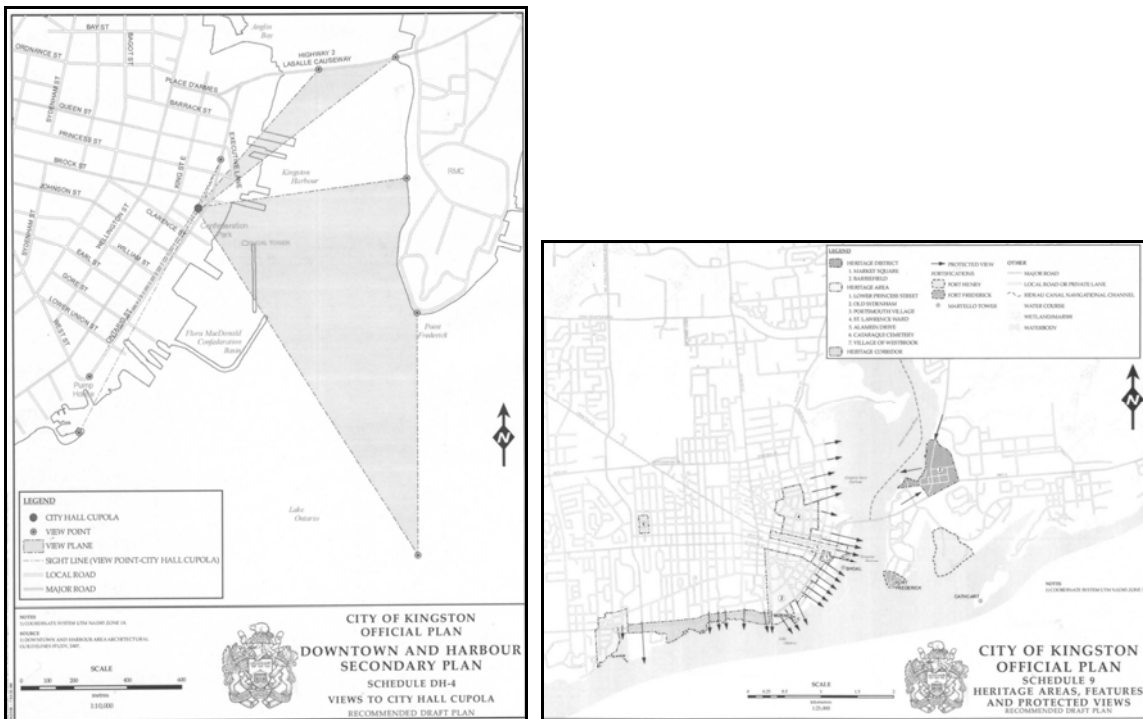


Figure 8 – Schedule DH-4 (at left) shows protected views to and from City Hall cupola. Schedule 9 shows protected views and areas with heritage character. St. Lawrence Ward (Area 4) is within the EA study area. (Source: City of Kingston Official Plan, adopted 2009)

²⁹ City of Kingston Official Plan (adopted 2009).

³⁰ City of Kingston Official Plan (adopted 2009), ss. 2.7.3 and 2.7.4.

POTENTIAL HERITAGE PROPERTIES IN THE ENVIRONMENTAL ASSESSMENT STUDY AREA

Potential heritage properties in the EA study area are indicated on the Locator Map in Appendix B. A listing of these properties is provided as Appendix D.

For the most part, the potential heritage properties indicated in appendices B and D are those which have the potential for designation or listing by the City of Kingston under the *Ontario Heritage Act*. The City has developed Evaluation Criteria for assessing heritage value, based on the regulatory requirements under the *Act*. The identification and evaluation of cultural heritage resources must be based on their: aesthetic, design or physical value; historical contextual value; or physical context value.³¹

Marcus Létourneau, Heritage Planner for the City of Kingston, has indicated that large sections of the city have never been systematically reviewed for their heritage value. This includes properties along the upper portion of Kingston Road 15 in the former Pittsburgh Township, and much of the area along the west side of the Cataraqui River. As a result, there is great potential in these areas for additional designations or listings, including the creation of heritage conservation districts.³²

Estuary of the Cataraqui River

A pilot study is underway to develop an overall landscape character statement for the Rideau Canal between the City of Kingston and Brass Point Bridge at Seeley's Bay. The purpose of the study is to identify potential cultural heritage landscape and heritage features along the canal, to assist in formulating heritage policy, and to raise awareness of the heritage values of the canal corridor. The study has been undertaken by Manuel Stevens (former Parks Canada planner), Brian Osborne (Queen's University) and Marcus Létourneau (City of Kingston Heritage Planner). Although it is not officially sanctioned or supported by Parks Canada or the City of Kingston, both authorities are aware of, and interested in, the study. As a pilot project, it may lead to a larger study of the entire canal corridor.

As part of the pilot study, a landscape character statement is being developed for the Estuary of the Cataraqui River. The estuary is similar in scope to the EA study area, extending from the LaSalle Causeway to the northern limit of the Great Cataraqui Marsh. The authors of the pilot study have identified key characteristics of the estuary as:

- the prominent, generally heavily wooded limestone escarpments on both sides of the estuary;
- the Great Cataraqui Marsh and adjacent natural shorelands;
- the LaSalle Causeway with the bascule bridge;
- the overall natural character of the estuary despite 200 years of settlement; and
- the lack of development along the estuary (other than Barriefield village, Point St. Mark and the marina in the inner harbour).

The heritage values of the estuary are:

- the high degree of integrity of the Great Cataraqui Marsh and Belle Island;
- the role of the escarpment on the east side in framing the harbour viewscape and preserving the natural undeveloped character of the estuary;
- the role of the escarpment in protecting the wetlands from development;
- the continuity of human occupation from First nations to the present;
- its function as the entrance to the Rideau Canal;

³¹ *Kingston Official Plan* (adopted 2009), s. 7.1, pp. 211-212.

³² Conversation with Marcus Létourneau, City of Kingston, 18 June 2009.

- the survival of the marine functions in the form of present-day marinas and drydock;
- the survival of the industrial function in the form of the cotton mill complex;
- the high degree of integrity and preservation of Barriefield village;
- the continuous military presence in the form of HMCS Cataraqui; and
- the survival of a number of farmhouses north of Barriefield which speak to the long history of agricultural settlement.

East of the Cataraqui River

Municipal heritage committees in the former Township of Pittsburgh tended to concentrate on pre-1900 buildings and those in certain areas such as Barriefield. As well, designations were not imposed without owner consent. As a result, there are several potential heritage properties along Kingston Road 15, especially the northern portion, that have not been designated. This includes several farmhouses or complete farmsteads, and one or two post-World-War-II wayside motels (Figure 9 and Figure 10). These properties clearly have heritage value and it is likely they will eventually be listed or designated by the City of Kingston. Other properties, such as the wayside motels and farmhouses whose history is unknown, will require research and evaluation before their heritage value can be determined.



Figure 9 – Potential heritage properties include brick farmhouses and farmsteads along Kingston Road 15 (#1292, upper left and right; #1368, lower left; and #1624, lower right). (Source: L. Smith, 2009)



Figure 10 – Potential heritage properties along Kingston Road 15 include: McCallum House (#1069, at left); and Compton House (#1200, at right). (Source: L. Smith, 2009)

West of the Cataraqui River

Early efforts by the City of Kingston municipal heritage committees concentrated on buildings in the downtown core built prior to 1900. Much of the area along the west side of the Cataraqui River, north of Bay Street, was not screened. In addition, much of the early review was on the basis of architectural significance and selected historical themes. Buildings associated with other historical themes may not have been detected if they did not also meet certain architectural criteria. In particular, heritage buildings constructed of materials other than limestone may not have been identified. As well, properties that were not considered as having heritage value twenty years ago because of their age or associations, might be identified as significant under current approaches to heritage conservation. This might include buildings with more local or working-class historical associations, and those constructed after 1900.

The City of Kingston intends to investigate certain areas for possible designation as heritage conservation districts. One of these is St. Lawrence Ward, an area bounded by: Queen Street to the south, John Street to the north, and extending as far west as Barrie Street and as far east as Rideau Street. The City considers the area to have a heritage style created through a combination of buildings, street pattern, varying street widths and public spaces.³³

East of St. Lawrence Ward, the Davis Drydock has operated as a shipbuilding facility since 1878 (Figure 11). The extent to which early built resources survive is unknown.

North of St. Lawrence Ward, a broad area along Montreal and Rideau streets has been indicated on the locator map as having the potential for properties of heritage value. In addition, some individual properties have been noted. Montreal Street was an early toll road, and there may be early 19th century properties associated with that function, possibly hidden beneath modern claddings. As well, the area around the former GTR/CNR station was a thriving community from the arrival of the railway in 1856, and some buildings may survive from this period, in addition to the stone structures already designated by the city (Figure 12). The River Street Pumping station, built by the City of Kingston in the mid-1950s, is a good example of institutional architecture from that period, and may be significant depending on comparable examples (Figure 11). Although the Davis Tannery has been indicated, it is unlikely that any built resources have survived from this establishment. It is therefore unlikely that there is any heritage value attached to the site. Towards the north end of Montreal Street, an abandoned stone cottage is one of the few stone structures not acknowledged to date by the municipal heritage committee (Figure 13).

Although potential heritage sites have been highlighted, a thorough evaluation of individual properties would be necessary to confirm whether they have heritage significance under the city's criteria.

³³ *City of Kingston Official Plan (1995, as amended to 2006)*, s. 7.4.4.5; and *City of Kingston Official Plan (adopted 2009)*, s. 7.3.C.6, p. 219; s. 7.3.D.6, p. 223; and Schedule 9.



Figure 11 – Potential heritage properties include the Davis Drydock (at left), at shipbuilding facility in operation since 1878; and the River Street pumping station, a city-owned facility built ca1955. (Source: L. Smith, 2009)



Figure 12 – There are several potential heritage properties along Montreal Street just south of John Counter Boulevard, at 919 Montreal (upper left), 891 – 895 Montreal (upper right), 831 Montreal (lower left) and 888 Montreal (lower right). (Source: L. Smith, 2009)



Figure 13 – These two houses are on either side of Montreal Street, north of John Counter Blvd. Their heritage significance is unknown. (Source: L. Smith, 2009)

HERITAGE CONSTRAINTS

For the purposes of the environmental assessment, identified heritage properties, potential heritage properties and protected views can be considered as heritage “constraints”, in that the effect of development on heritage must be considered in these areas. However, heritage status does not necessarily preclude development. The extent to which a heritage designation or commemoration constrains development will depend upon the heritage values of the site, and the potential impact of the proposed development on those heritage values.

Looking at the maps provided as Appendix A and Appendix C, it is clear that the southern portion of the EA study area contains many more potential heritage constraints than the northern portion. The southern portion can be defined as the area from Barriefield south, on the east side of the Cataraqui River, and from River Street south, on the west side of the river. It includes the LaSalle Causeway, and most of the Inner Harbour. Most of the Cataraqui River shoreline in this area is either part of a National Historic Site or a Heritage Conservation District, or is subject to protected views. While implementing an alternative crossing solution involving either a bridge, tunnel or expansion to the LaSalle Causeway would not be impossible in this area, it would need to proceed carefully with due regard to the many heritage resources and protected views in the area.

The northern portion of the EA study area has far fewer heritage constraints. Most significant of these is the Pittsburgh branch of the Kingston Frontenac Public Library at 80 Gore Road, a 7.2-hectare, city-owned property on the east side of the Cataraqui River. The designation by-law passed by the City of Kingston in 2007 indicates that the property is significant not only for historical and architectural reasons, but for its ongoing role as a community landmark and resource. Although the designation applies to the entire property, the heritage resources that require conservation are located mostly in the “upper plateau” of the property. Some of these resources, such as the dry stone wall and remnants of the formal gardens, may be within the required road allowance of Gore Road. Under the city’s heritage policies, any development that impinged on this designated property or was adjacent to it, would require the preparation of a detailed Heritage Impact Statement (HIS). The HIS would identify the exact location of heritage resources and consider the potential impact of the proposed development on heritage value. It would also propose mitigative measures.

The other heritage constraints in the northern section of the EA study area are the large areas, especially along the west side of the Cataraqui River, that have never been systematically reviewed for heritage potential. Although a handful of buildings has been designated or listed, there is strong potential for the identification of additional significant buildings along Montreal and Rideau streets, and in the vicinity of the former Grand Trunk Railway Station. Montreal Street was an early toll road connecting Kingston with Montreal. The area known as the “Outer Station” became a thriving community with the station’s construction in the mid-19th century. Significant historical associations may be hidden beneath the modest architecture and 20th century coverings of buildings in this area. Any potential crossing of the Cataraqui River in this area would require further heritage research and evaluation.

The final heritage constraint to note is the Rideau Canal, a UNESCO World Heritage Site, a National Historic Site and a Canadian Heritage River. Any potential crossing of the Cataraqui River north of Belle Island must respect the heritage values of the canal, as set out in the relevant Parks Canada management plans and proposed City of Kingston Official Plan.

APPENDIX A - LOCATOR MAP: IDENTIFIED HERITAGE PROPERTIES

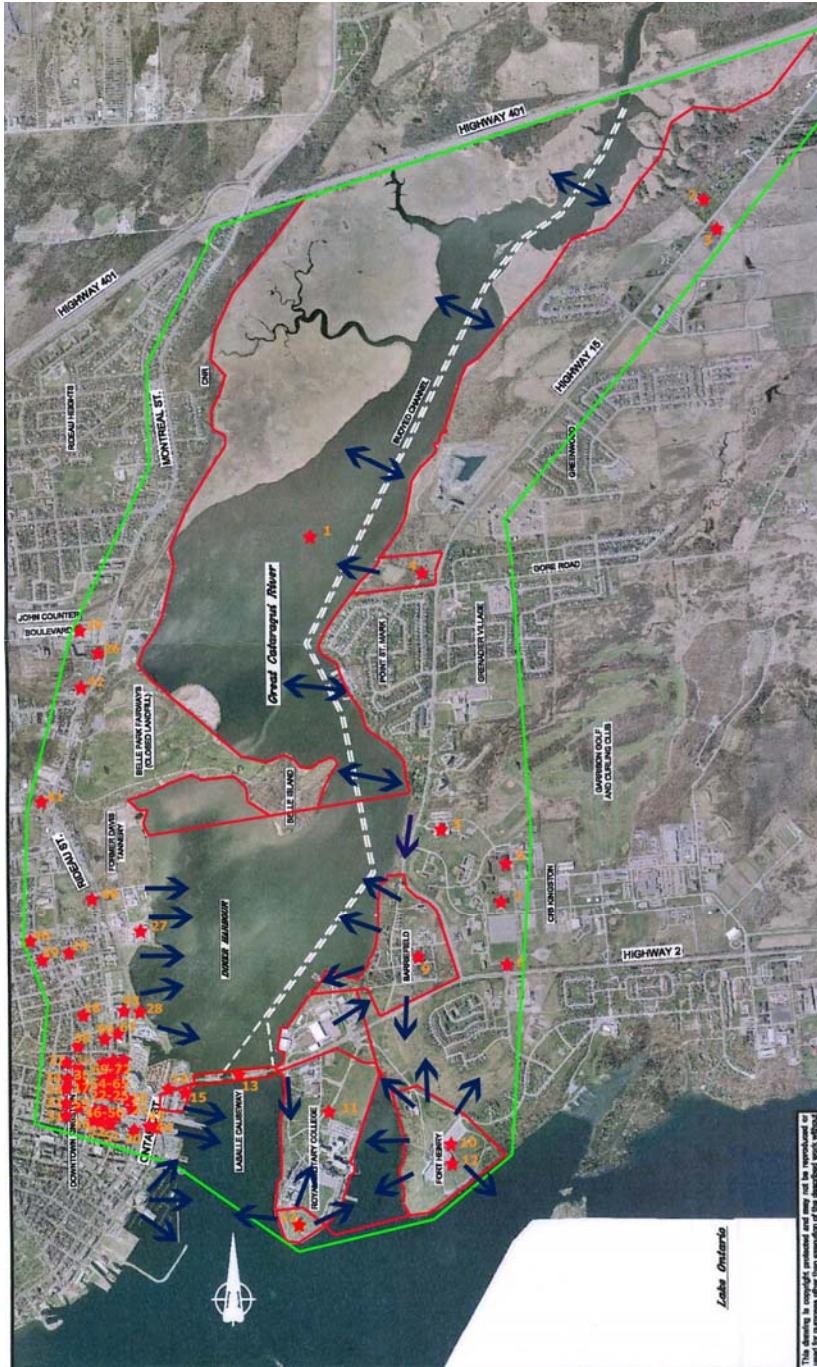


Figure 14 – Red stars indicate identified heritage properties. Boundaries are added in red as necessary. Blue arrows indicate protected views. Orange numbers are keyed to table in Appendix C. The EA study area is outlined in green. (Source: J.L. Richards & Associates Ltd., edited by L. Smith)

APPENDIX B - LOCATOR MAP: POTENTIAL HERITAGE PROPERTIES

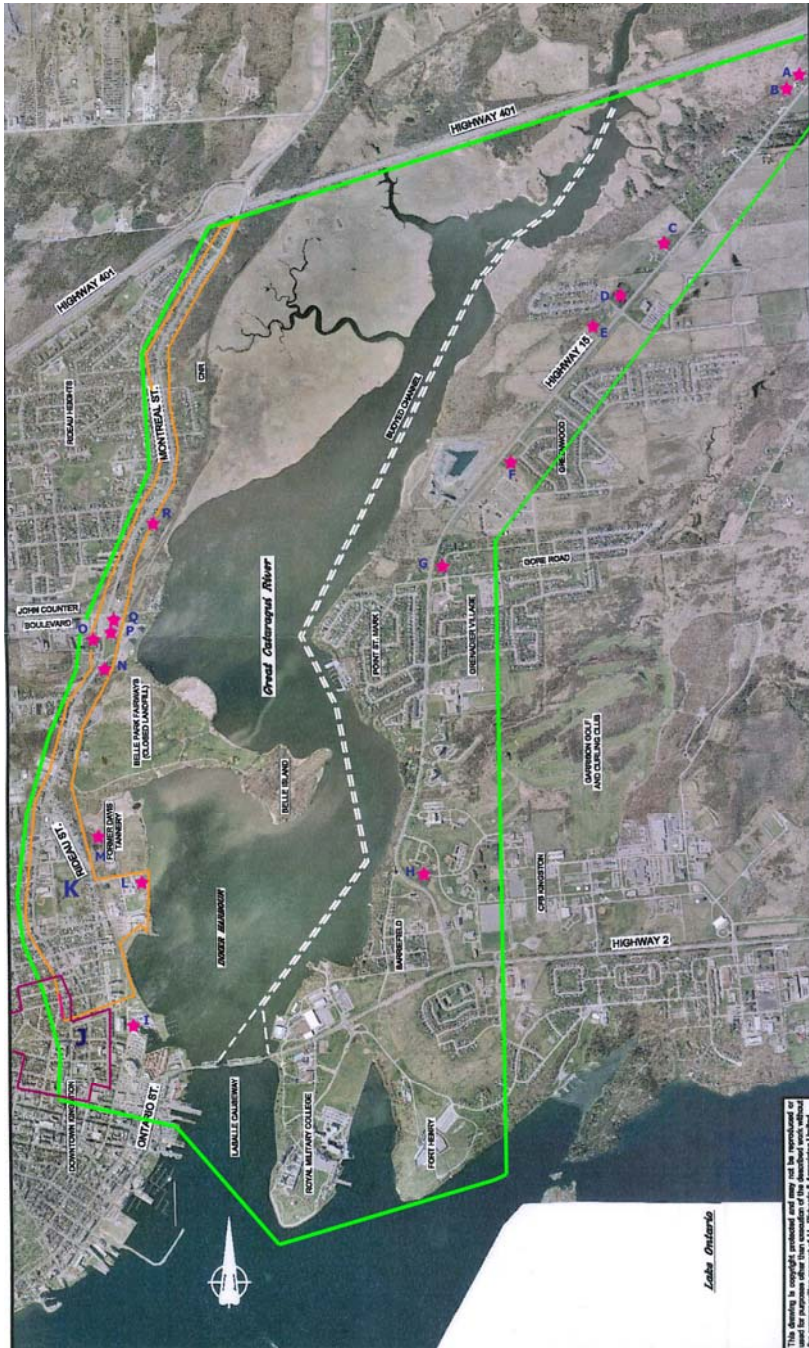


Figure 15 – Pink stars indicate potential heritage properties. The area outlined in orange (“K”) has not been systematically reviewed, and has the potential to yield future designations or listings. The St. Lawrence Ward, highlighted by the City for further study and potential designation, is outlined in purple (“J”). The EA study area is outlined in green. (Source: J.L. Richards & Associates Ltd., edited by L.Smith)

APPENDIX C – IDENTIFIED HERITAGE PROPERTIES

Map Locator No.	Name	Street Address	Designation	Extent of Heritage Value
1	Rideau Canal Waterway		UNESCO World Heritage Site National Historic Site Canadian Heritage River	Canal bed to high water mark; from Belle Island north; AND viewsheds and visual linkages in Kingston harbour. ³⁴
EAST SHORE				
2	Cataraqui Grange	1412 Kingston Road 15	City of Kingston, OHA Part IV	Legal property boundaries. ³⁵
3	Tymparon Inn	1403 Kingston Road 15	City of Kingston, OHA Part IV	Legal property boundaries. ³⁶
4	Kingston Frontenac Public Library, Pittsburgh Branch (aka. Hawthorn Cottage, Ruttan House, MacLean Park)	80 Gore Road (also 914 Kingston Road 15)	City of Kingston, OHA Part IV; Includes 4 bronze plaques on stone cairn erected by Pittsburgh Township Historical Society. ³⁷	Entire 7.2-ha property as a “coherent whole property” including stone farmhouse, remains of formal garden and agricultural activities, dry stone wall, pathways; AND scenic views of Cataraqui River. ³⁸
5	Health Services Clinic (Building MB-62)	1 Entretien Avenue, CFB Kingston	Recognized Federal Heritage Building	Footprint of building. ³⁹
6	Lewis Hall (Building MB-39)	7 Apprentice Street, CFB Kingston	Recognized Federal Heritage Building	Footprint of building. ⁴⁰
7	Sherman Hall (Building MB-37)	20 Craftsman Boulevard, CFB	Recognized Federal Heritage Building	Footprint of building. ⁴¹

³⁴ Parks Canada, *Rideau Canal and Merrickville Blockhouse National Historic Sites of Canada, Commemorative Integrity Statement*, August 2000; and Parks Canada, *Rideau Canal National Historic Site of Canada Management Plan*, 2005.

³⁵ Reasons for Designation, City of Kingston, 1982, By-law 30-82.

³⁶ Reasons for Designation, City of Kingston, 1981, By-law 24-83.

³⁷ “Hawthorn Cottage,” “The Reeves of Pittsburgh Township 1850-1997,” “Pittsburgh Township 1787-1997,” and “John Bennett Marks,” erected by Pittsburgh Township Historical Society, 2000.

³⁸ Reasons for Designation, City of Kingston, 2007, By-law 2007-166.

³⁹ Heritage Character Statement, FHBRO 00-043.

⁴⁰ Heritage Character Statement, FHBRO 93-116.

Map Locator No.	Name	Street Address	Designation	Extent of Heritage Value
		Kingston		
8	Royal Canadian Electrical and Mechanical Engineers Memorial	Highway 2 entrance to McNaughton Barracks, CFB Kingston	Royal Canadian Electrical and Mechanical Engineers memorials	Bronze plaques on stone walls, Sherman tank and 25-pounder gun. ⁴²
9	Barriefield Heritage Conservation District	Barriefield	City of Kingston, OHA Part V; Includes provincial plaque; ⁴³ and bronze plaque on stone cairn erected by Barriefield Rock Garden Committee and 1 st Divisional Headquarters. ⁴⁴	Village boundaries as shown on map; AND viewsapes from the village towards the Cataraqui and St. Lawrence rivers, Fort Henry and downtown Kingston; AND landmark of St. Mark's Church, highly visible from a distance. ⁴⁵
10	Fort Henry National Historic Site of Canada	Fort Henry	Part of UNESCO World Heritage Site; and National Historic Site. Includes 5 Classified Federal Heritage Buildings; 3 Recognized Federal Heritage Buildings; 1 National Historic Event plaque; 2 provincial plaques; and plaques erected by Royal Engineers; Fort Henry Guard Club; St.	Property boundaries as shown on map; AND viewsapes to and from Kingston Harbour and other fortifications. ⁴⁷

⁴¹ Heritage Character Statement, FHBRO 93-116.

⁴² "Royal Canadian Electrical and Mechanical Engineers Memorial," erected by the Royal Canadian Electrical and Mechanical Engineers in 1961. (Kingston Historical Society, *An Illustrated Guide to Monuments, Memorials & Markers in the Kingston Area* (Kingston: Kingston Historical Society, 2000), p. 110.

⁴³ "St. Mark's Church 1843," aluminum plaque on post, erected by Ontario Heritage Foundation in 1962.

⁴⁴ "The 'Old Red Patch'," bronze plaque on stone cairn erected by Barriefield Rock Garden Committee and 1st Divisional Headquarters in 1994.

⁴⁵ *Barriefield Heritage Conservation District Plan*, 1992; and "Barriefield," Statement of Significance, Canadian Register of Historic Places.

⁴⁶ "Caponier," Heritage Character Statement, Recognized Federal Heritage Building, FHBRO 96-051; "Commissariat Stores/East Reverse Fire Chamber," Heritage Character Statement, Classified Federal Heritage Building, FHBRO 96-051; "Curtain Wall and Demi-Bastions," Heritage Character Statement, Classified Federal Heritage Building, FHBRO 96-051; "East Branch Ditch Tower," Heritage Character Statement, Classified Federal Heritage Building, FHBRO 96-051; "Redoubt," Heritage Character Statement, Classified Federal Heritage Building, FHBRO 96-051; "Reverse Fire Gallery East," Heritage Character Statement, Recognized Federal Heritage Building, FHBRO 96-051; "Reverse Fire Gallery West," Heritage Character Statement, Recognized Federal Heritage Building, FHBRO 96-051; "West Branch Ditch Tower," Heritage Character Statement, Classified Federal Heritage Building, FHBRO 96-051; "Pro Patria 1812-1814," National Historic Person plaque erected by Historic Sites and Monuments Board of Canada, 1939; "Fort Henry," plaque erected by the Ontario Heritage Foundation in 1957; "Sir Richard Bonnycastle 1791-1847," plaque erected by the Ontario Heritage

Map Locator No.	Name	Street Address	Designation	Extent of Heritage Value
			Lawrence Parks Commission; and Ukrainian Canadian Civil Liberties Association. ⁴⁶	
11	Kingston Navy Yard and Point Frederick Buildings National Historic Sites of Canada	Royal Military College	Part of UNESCO World Heritage Site; and two National Historic Sites. Includes 2 Classified Federal Heritage Buildings; 25 Recognized Federal Heritage Buildings; 2 National Historic Person plaques; 4 provincial plaques; RMC Memorial Arch, stone pillar, and Dockyard Bell; memorial cross.	Property boundaries as shown on map; AND viewscapes to and from Fort Henry, Kingston Harbour and other fortifications. ⁴⁸
12	Kingston Fortifications National Historic Site of Canada	Comprises Fort Henry NHSC, Fort Frederick (at RMC), and three Martello Towers (Cathcart, Murney and Shoal)	National Historic Site of Canada	Property boundaries of five components; AND viewscapes between component fortifications; AND viewscapes to and from Kingston harbour. ⁴⁹
WEST SHORE				
13	LaSalle Causeway (with Bridge Office/Shop and bascule bridge)	LaSalle Causeway	Listed by City of Kingston. Recognized Federal Heritage Building	Entire causeway and bridge. Bridge Office/Shop (footprint of building) ⁵⁰
14	Fort Frontenac National Historic Site of Canada	317 Ontario Street	National Historic Site of Canada. Listed by City of Kingston.	Outline of original French fort, as confirmed by archaeological excavation. ⁵¹

Foundation in 1957; "Commissariat Stores," plaque erected by the Royal Engineers c1844; "Ronald Lawrence Way, CM MA LLD," plaque erected by the Fort Henry Guard Club of Canada in 1988; "Fort Henry Guard Honour Roll," Plaque erected by the St. Lawrence Parks Commission in 1968; "Internment of Ukrainian Canadians," plaque erected by the Ukrainian Civil Liberties Association in 1994; "In Tribute to the Planners, Builders and Restorers of this Fort," plaque erected by the St. Lawrence Parks Commission in 1968.

⁴⁷ Parks Canada, *Fort Henry National Historic Site Commemorative Integrity Statement*, 1996.

⁴⁸ *Kingston Navy Yard and Point Frederick Buildings National Historic Sites of Canada DRAFT Commemorative Integrity Statement*, 4 March 2007.

⁴⁹ *Kingston Fortifications National Historic Site of Canada Commemorative Integrity Statement*, 1998.

⁵⁰ Heritage Character Statement, Recognized Federal Heritage Building, FHBRO 92-078.

⁵¹ "Fort Frontenac," Status of Designations Report, 2007. Commemorated by Historic Sites and Monuments Board of Canada, 1926.

Map Locator No.	Name	Street Address	Designation	Extent of Heritage Value
15	Fort Frontenac (former Tête du Pont) Barracks	317 Ontario Street	Fort Frontenac Barracks includes five Federal Heritage Buildings; and plaques by the Historic Sites and Monuments Board of Canada, Department of National Defence, Kingston Historical Society, and Royal Canadian Horse Artillery.	Footprint of five buildings; and plaques. ⁵²
16		315 Bagot Street	City of Kingston, OHA Part IV	Legal property boundary. ⁵³
17		344-350 Bagot Street	Listed by City of Kingston	Legal property boundary. ⁵⁴
18		490 Bagot Street	Listed by City of Kingston	Legal property boundary. ⁵⁵
19		605 Bagot Street	Listed by City of Kingston	Legal property boundary. ⁵⁶
20	Strange House (plaque)	55 Barrack Street	Kingston Historical Society plaque	Bronze plaque. ⁵⁷
21	Stormont, Dundas and Glengarry Highlanders (plaque)	64 Barrack Street	1 st Battalion, Stormont, Dundas and Glengarry Highlanders Association plaque	Bronze plaque on wall. ⁵⁸
22	The Meagher House	85 Barrack Street	City of Kingston, OHA Part IV; Includes Kingston Historical Society plaque.	Legal property boundary, ⁵⁹ Aluminum plaque on post. ⁶⁰

⁵² Administration Office/Vincent Block (Classified Federal Heritage Building, FHBRO 89-040); Bradstreet Block (Recognized Federal Heritage Building, FHBRO 89-040); Courcelles Block (Recognized Federal Heritage Building, FHBRO 89-040); De Noyan Block (Classified Federal Heritage Building, FHBRO 89-040); Heating Plan – former Commissariat Storehouse (Recognized Federal Heritage Building, FHBRO 89-040); Lasalle Block (Recognized Federal Heritage Building, FHBRO 89-040); Ross Block (Recognized Federal Heritage Building, FHBRO 89-040); “Crawford Purchase”, National Historic Event, plaque erected by the Historic Sites and Monuments Board of Canada in 1934; “Royal Canadian Artillery 125th Anniversary,” plaque erected by Royal Canadian Horse Artillery in 1996; “Royal Canadian Horse Artillery Memorial,” plaque erected by Royal Canadian Horse Artillery in c1971; “Fort Frontenac,” plaque erected by Kingston Historical Society in 1957; “Fort Frontenac,” plaque erected by Department of National Defence in 1959; “Robert Rogers 1760,” plaque erected by Kingston Historical Society in 1961.

⁵³ Reasons for Designation, City of Kingston, 1981, By-law 81-101, amended by By-law 81-181.

⁵⁴ Listed by City of Kingston, 1985, BAH Vol. VI, p. 146

⁵⁵ Listed by City of Kingston, 1985, BAH Vol. VI, p. 8.

⁵⁶ Listed by City of Kingston, 1985, BAH Vol. VI, p. 11.

⁵⁷ “Strange House,” plaque erected 1957 by Kingston Historical Society. (Kingston Historical Society, *Guide to Monuments*, p. 51.

⁵⁸ “Stormont, Dundas and Glengarry Highlanders,” plaque erected c1956 by 1st Battalion, Stormont, Dundas & Glengarry Highlanders Association. (Kingston Historical Society, *Guide to Monuments*, p. 52.

⁵⁹ Reasons for Designation, City of Kingston, 1975, By-law 8497, amended by By-law 8892.

Map Locator No.	Name	Street Address	Designation	Extent of Heritage Value
23		87 Barrack Street	City of Kingston, OHA Part IV	Legal property boundary. ⁶¹
24		89 Barrack Street	City of Kingston, OHA Part IV	Legal property boundary. ⁶²
25		119 Barrack Street	City of Kingston, OHA Part IV	Legal property boundary. ⁶³
26	Grand Trunk Railway Terrace	1-5 Cassidy Street	City of Kingston, OHA Part IV	Legal property boundary. ⁶⁴
27	The Woolen Mill, Kingston Cotton Manufacturing Company	2-6 Cataraqui Street	City of Kingston, OHA Part IV; Includes 2 brass plaques erected by the Kingston Whig-Standard and the Canadian Daily Newspaper Publishers Association.	Legal property boundary. ⁶⁵
28	Stone Cross “Ulster Munster Leinster Connacht”	Douglas Fluhrer Park, Wellington Street	Memorial erected by Government of Ireland to commemorate Irish workers killed building Rideau Canal 1826-32.	Stone monument. ⁶⁶
29		730 John Counter Boulevard	Listed by City of Kingston	Legal property boundary. ⁶⁷
30		390 King Street East	Listed by City of Kingston	Legal property boundary. ⁶⁸
31	Victoria Terrace	50 – 72 Montreal Street	City of Kingston, OHA Part IV	Legal property boundary. ⁶⁹
32		90 Montreal Street	Listed by City of Kingston	Legal property boundary. ⁷⁰

⁶⁰ “The Meagher House,” erected in 1984 by Kingston Historical Society in cooperation with Meagher’s Distillery Limited. (Kingston Historical Society, *Guide to Monuments*, p. 53.)

⁶¹ Reasons for Designation, City of Kingston, 1975, By-law 8497, amended by By-law 8892.

⁶² Reasons for Designation, City of Kingston, 1976, By-law 8497, amended by By-law 8892.

⁶³ Reasons for Designation, City of Kingston, 1975, By-law 8497, amended by By-law 8892.

⁶⁴ Reasons for Designation, City of Kingston, 1976, By-law 8913.

⁶⁵ Reasons for Designation, City of Kingston, 1987, By-law 87-151.

⁶⁶ Site visit, 18 June 2009.

⁶⁷ Listed by the City of Kingston, 1985, BAH Vol. VI, p. 113.

⁶⁸ Listed by the City of Kingston, 1977, BAH Vol. VI, p. 220.

⁶⁹ Reasons for Designation, City of Kingston, 1987, By-law 87-151.

⁷⁰ Listed by the City of Kingston, 1985, BAH Vol. VI, p. 148.

Map Locator No.	Name	Street Address	Designation	Extent of Heritage Value
33	Kingston Armouries	100 Montreal Street	Classified Federal Heritage Building; Includes four memorial plaques erected on interior by 21 st Battalion Association and Princess of Wales' Own Regiment.	Footprint of the building; ⁷¹ Bronze plaque; painted wooden cross, wooden plaque; and bronze plaque. ⁷²
34	Wellington Terrace	104-112 Montreal Street	City of Kingston, OHA Part IV	Legal property boundary. ⁷³
35		111-117 Montreal Street	Listed by City of Kingston	Legal property boundary. ⁷⁴
36		119-125 Montreal Street	Listed by City of Kingston	Legal property boundary. ⁷⁵
37		140-148 Montreal Street	Listed by City of Kingston	Legal property boundary. ⁷⁶
38		151-155 Montreal Street	Listed by City of Kingston	Legal property boundary. ⁷⁷
39		326 Montreal Street	Listed by City of Kingston	Legal property boundary. ⁷⁸
40		356-358 Montreal Street	Listed by City of Kingston	Legal property boundary. ⁷⁹
41	Depot School	610 Montreal Street	City of Kingston, OHA Part IV	Legal property boundary. ⁸⁰
42	Grand Trunk Railway Station	810 Montreal Street	City of Kingston, OHA Part IV Heritage Railway Station, <i>Heritage Railway Stations Protection Act</i>	Legal property boundary; ⁸¹ Footprint of the three, linked, station buildings. ⁸²

⁷¹ Heritage Character Statement, Classified Federal Heritage Building, FHBRO 88-139.

⁷² "21st Infantry Battalion," "21st Battalion Memorial Cross," "Princess of Wales' Own Regiment," and "Princess of Wales' Own Regiment," in Kingston Historical Society Plaque Committee, *Guide to Monuments*, pp. 56-59.

⁷³ Reasons for Designation, City of Kingston, 1987, By-law 87-151.

⁷⁴ Listed by City of Kingston, 1985, BAH Vol. VI, p. 152.

⁷⁵ Listed by City of Kingston, 1985, BAH Vol. VI, p. 154.

⁷⁶ Listed by City of Kingston, 1985, BAH Vol. VI, p. 156.

⁷⁷ Listed by City of Kingston, 1985, BAH Vol. p. 158.

⁷⁸ Listed by City of Kingston, 1985, BAH Vol. p. 160.

⁷⁹ Listed by City of Kingston, 1985, BAH Vol. VI, p. 162.

⁸⁰ Reasons for Designation, City of Kingston, 1976, By-law 8913.

⁸¹ Reasons for Designation, City of Kingston, 1987, By-law 87-179.

Map Locator No.	Name	Street Address	Designation	Extent of Heritage Value
43	Old Imperial Oil Building	9 North Street	City of Kingston, OHA Part IV	Legal property boundary. ⁸³
44		19-23 Queen Street	City of Kingston, OHA Part IV	Legal property boundary. ⁸⁴
45	PUC Substation	27 Queen Street	City of Kingston, OHA Part IV	Legal property boundary. ⁸⁵
46		79-81 Queen Street	City of Kingston, OHA Part IV	Legal property boundary. ⁸⁶
47		85 Queen Street	City of Kingston, OHA Part IV	Legal property boundary. ⁸⁷
48		87-89 Queen Street	City of Kingston, OHA Part IV	Legal property boundary. ⁸⁸
49		91 Queen Street	City of Kingston, OHA Part IV	Legal property boundary. ⁸⁹
50		93-95 Queen Street	City of Kingston, OHA Part IV	Legal property boundary. ⁹⁰
51		102-104 Queen Street	City of Kingston, OHA Part IV	Legal property boundary. ⁹¹
52		108-110 Queen Street	City of Kingston, OHA Part IV	Legal property boundary. ⁹²
53	St. Paul's Anglican Church	137 Queen Street	City of Kingston, OHA Part IV; Includes Kingston Historical Society plaque and Ontario Heritage Foundation plaque.	Legal property boundary of church and churchyard; ⁹³ Aluminum plaque on post; ⁹⁴ and aluminum plaque on post. ⁹⁵

⁸² "Canadian National Railways Station," Statement of Significance, Canadian Register of Historic Places. Designated by the federal government in 1994.

⁸³ Reasons for Designation, City of Kingston, 1987, By-law 87-355.

⁸⁴ Reasons for Designation, City of Kingston, 1995, By-law 95-225.

⁸⁵ Reasons for Designation, City of Kingston, 1995, By-law 95-226.

⁸⁶ Reasons for Designation, City of Kingston, 1981, By-law 81-101, amended by By-law 81-181.

⁸⁷ Reasons for Designation, City of Kingston, 1981, By-law 81-101, amended by By-law 81-181.

⁸⁸ Reasons for Designation, City of Kingston, 1981, By-law 81-101, amended by By-law 81-181.

⁸⁹ Reasons for Designation, City of Kingston, 1981, By-law 81-101, amended by By-law 81-181.

⁹⁰ Reasons for Designation, City of Kingston, 1981, By-law 81-101, amended by By-law 81-181.

⁹¹ Reasons for Designation, City of Kingston, 1981, By-law 81-101, amended by By-law 81-181.

⁹² Reasons for Designation, City of Kingston, 1981, By-law 81-101, amended by By-law 81-181.

⁹³ Reasons for Designation, City of Kingston, 1976, By-law 8497, amended by By-law 8892.

⁹⁴ "St. Paul's Churchyard 1783." Erected by Kingston Historical Society, 1958 (Kingston Historical Society, *Guide to Monuments*, p. 54).

Map Locator No.	Name	Street Address	Designation	Extent of Heritage Value
54		1-3 Rideau Street	City of Kingston, OHA Part IV	Legal property boundary. ⁹⁶
55		4-6 Rideau Street	City of Kingston, OHA Part IV and heritage easement.	Legal property boundary. ⁹⁷
56		8 Rideau Street	City of Kingston, OHA Part IV and heritage easement.	Legal property boundary. ⁹⁸
57		10-12 Rideau Street	City of Kingston, OHA Part IV	Legal property boundary. ⁹⁹
58		14 Rideau Street	City of Kingston, OHA Part IV	Legal property boundary. ¹⁰⁰
59		15-17 Rideau Street	Listed by City of Kingston	Legal property boundary. ¹⁰¹
60		16 Rideau Street	Listed by City of Kingston	Legal property boundary. ¹⁰²
61		23-33 Rideau Street	Listed by City of Kingston	Legal property boundary. ¹⁰³
62		61-63 Rideau Street	City of Kingston, OHA Part IV	Legal property boundary. ¹⁰⁴
63	Cataraqui School	64-68 Rideau Street	City of Kingston, OHA Part IV	Legal property boundary. ¹⁰⁵
64		69 Rideau Street	City of Kingston, OHA Part IV	Legal property boundary. ¹⁰⁶
65		71 Rideau Street	City of Kingston, OHA Part IV	Legal property boundary. ¹⁰⁷

⁹⁵ “Molly Brant.” Erected by Ontario Heritage Foundation, 1975 (Kingston Historical Society, *Guide to Monuments*, p. 55).

⁹⁶ Reasons for Designation, City of Kingston, 1976, By-law 8497, amended by By-law 8892.

⁹⁷ Reasons for Designation, City of Kingston, 1987, By-law 87-151. Heritage easement registered 1986.

⁹⁸ Reasons for Designation, City of Kingston, 1986, By-law 87-151. Heritage easement registered 1986.

⁹⁹ Reasons for Designation, City of Kingston, 1987, By-law 87-151.

¹⁰⁰ Reasons for Designation, City of Kingston, 1987, By-law 87-151.

¹⁰¹ Listed by City of Kingston, 1985, BAH Vol. VI, p. 220.

¹⁰² Listed by City of Kingston, 1985, BAH Vol. VI, p. 216.

¹⁰³ Listed by City of Kingston, 1985, BAH Vol. VI, p. 222.

¹⁰⁴ Reasons for Designation, City of Kingston, 1987, By-law 87-179.

¹⁰⁵ Reasons for Designation, City of Kingston, 1987, By-law 87-321.

¹⁰⁶ Reasons for Designation, City of Kingston, 1987, By-law 87-179.

¹⁰⁷ Reasons for Designation, City of Kingston, 1987, By-law 87-179.

Map Locator No.	Name	Street Address	Designation	Extent of Heritage Value
66		110-112 Rideau Street	City of Kingston, OHA Part IV and heritage easement. Includes two National Historic Person plaques.	Legal property boundary; ¹⁰⁸ Two bronze plaques on wall. ¹⁰⁹
67	Molly Brant (Tekonwatonti) (plaques)	Rideaucrest Retirement Home, 175 Rideau Street	National Historic Person plaque; Kingston Historical Society cairn	Bronze plaque on post; ¹¹⁰ Bronze bust on cairn. ¹¹¹
68		348-354 Rideau Street	Listed by City of Kingston	Legal property boundary. ¹¹²
69	Rideau Terrace	2 – 8 Rideau Terrace	City of Kingston, OHA Part IV	Legal property boundary. ¹¹³
70		262 Wellington Street	Listed by City of Kingston	Legal property boundary. ¹¹⁴
71		270-274 Wellington Street	City of Kingston, OHA Part IV	Legal property boundary. ¹¹⁵
72	Wellington Street Brewery (aka. Bajus Brewery)	308 Wellington Street	City of Kingston, OHA Part IV	Legal property boundary. ¹¹⁶

¹⁰⁸ Reasons for Designation, City of Kingston, 1976, By-law 8497, amended by By-law 8892. Heritage easement registered 1983.

¹⁰⁹ "Sir John A. Macdonald." Historic Sites and Monuments Board of Canada. Unilingual plaque erected 1927. Bilingual plaque erected 1983.

¹¹⁰ "Mary (Molly) Brant (Tekonwatonti) c1736-1796." Historic Sites and Monuments Board of Canada, commemorated 1994, plaque erected 1996.

¹¹¹ "Molly Brant (Konwatsi'tsaienni Degonwadonti)." Erected by Kingston Historical Society, 1996. Kingston Historical Society, *Guide to Monuments*.

¹¹² Listed by the City of Kingston, 1985, BAH Vol. VI, p. 232.

¹¹³ Reasons for Designation, City of Kingston, 1976, By-law 8497, amended by By-law 8892.

¹¹⁴ Listed by the City of Kingston, 1985, BAH Vol. VI, p. 262.

¹¹⁵ Reasons for Designation, City of Kingston, 1993, By-law 93-41.

¹¹⁶ Reasons for Designation, City of Kingston, 1976, By-law 8497, amended by By-law 8892. Heritage easement registered 1986.

APPENDIX D - POTENTIAL HERITAGE PROPERTIES

Map Locator No.	Name	Address	Reasons
EAST SHORE			
A	Farmstead	1624 Kingston Road 15	Late-19 th or early-20 th century frame farmhouse in original farmyard setting, with barn and various outbuildings. History unknown. Under new approaches to heritage conservation, guided by heritage criteria authorized under <i>Ontario Heritage Act</i> , City of Kingston municipal heritage committee could designate. ¹¹⁷
B	Kingston East Motel	1488 Kingston Road 15	Built c1955. Under new approaches to heritage conservation, guided by heritage criteria authorized under <i>Ontario Heritage Act</i> , City of Kingston municipal heritage committee could designate mid-20 th century strip motels. ¹¹⁸
C	Maple Close/Green Woods Inn	1368 Kingston Road 15	Brick house possibly built ca1850 and rebuilt to its current configuration ca1910. Guided by heritage criteria authorized under <i>Ontario Heritage Act</i> , City of Kingston municipal heritage committee could designate. ¹¹⁹
D	Brick farmhouse	1292 Kingston Road 15	Late-19 th century brick farmhouse in original setting. Guided by heritage criteria authorized under <i>Ontario Heritage Act</i> , City of Kingston municipal heritage committee could designate. ¹²⁰
E	Compton House	1200 Kingston Road 15	19 th century stone house with alterations to windows and roofline. Rental property owned by Queen's University. Guided by heritage criteria authorized under <i>Ontario Heritage Act</i> , City of Kingston municipal heritage committee could designate. ¹²¹
F	McCallum House	1069 Kingston Road 15 (part Lot 7, EGCR)	Stone house built c1830-40. Identified by Pittsburgh Township heritage committee as heritage but not designated because of owner objection. Very possible that City of Kingston will

¹¹⁷ Conversation with Marcus Létourneau, City of Kingston, 18 July 2009.

¹¹⁸ Conversation with Marcus Létourneau, City of Kingston, 18 July 2009.

¹¹⁹ Conversation with Marcus Létourneau, City of Kingston, 18 July 2009.

¹²⁰ Conversation with Marcus Létourneau, City of Kingston, 18 July 2009.

¹²¹ Conversation with Marcus Létourneau, City of Kingston, 18 July 2009.

¹²² "McCallum House," Pittsburgh Township heritage files, City of Kingston; and conversation with Marcus Létourneau, City of Kingston, 19 June 2009.

			list or designate the property. ¹²²
G	Thomas Milton House	Building 42, McNaughton Barracks, 7 Craftsman Boulevard, CFB Kingston (part of Lot 19, EGCR)	Stone house built c1878 near Barriefield. Owned by federal government, Department of National Defence. FHBRO review in 2000 found it not heritage according to federal standards. ¹²³ Reviewed by Township of Pittsburgh, but no decision because of federal ownership. Possible that City of Kingston could list the property. ¹²⁴
WEST SHORE			
I	Davis Drydock	Wellington Street	Drydock and shipbuilding facility established 1878 and still in operation.
J	St. Lawrence Ward	Area bounded by Queen, Barrack, etc.	Area of high heritage potential identified by City of Kingston in proposed Official Plan, for further investigation and possible designation.
K	Montreal Street, Rideau Street, Outer Station		This area has never been systematically reviewed for its heritage value. Montreal Road was an early toll road. The area around the former GTR station was a thriving 19 th century community. ¹²⁵
L	River Street Pumping Station, City of Kingston	River Street	Water pumping station built c1955 in style typical of that period. Very few exterior alterations.
M	Former Davis Tannery site	Rideau and River streets	Property was used as lead smelter 1867-1918 and as tannery from 1911 to 1973. Brownfields site vacant since 1973. Transferred by City to Rideau Renewal Inc. in 2007 for redevelopment. Unlikely to have heritage value, as City of Kingston states there are no heritage resources at the site. ¹²⁶
N	Second Empire house	831 Montreal Street	One-storey, brick house with mansard roof, located directly across Montreal Street from the mansard-roofed GTR station. History unknown. City has not yet reviewed this property for heritage significance. ¹²⁷
O	Frame farmhouse	888 Montreal Street	Frame farmhouse with clapboard siding and gingerbread trim in original setting. History

¹²³ Rhoda Bellamy, *FHBRO Building Report 00-122, Milton House (Building 42)*. E-mail from Steve Dale, CIHB, Parks Canada, reporting FHBRO result.

¹²⁴ "The Thomas Milton House," Pittsburgh Township heritage files, City of Kingston; and conversation with Marcus Létourneau, City of Kingston, 19 June 2009.

¹²⁵ Conversation with Marcus Létourneau, City of Kingston, 18 June 2009.

¹²⁶ Conversation with Marcus Létourneau, City of Kingston, 18 June 2009.

¹²⁷ Conversation with Marcus Létourneau, City of Kingston, 18 June 2009.

			unknown. Frame house in this location appears on 1878, 1908, 1924 maps. ¹²⁸ City has not yet reviewed this property for heritage significance. ¹²⁹
P	Three identical frame houses	Montreal Street, just south of John Counter Boulevard	Houses in this location appear on early maps. City has not yet reviewed these properties for heritage significance. ¹³⁰
Q	Frame house	919 Montreal Street (SE corner of John Counter Boulevard and Montreal)	One-storey frame house with high eaves line. Siding covers original exterior. History unknown. Building in this location appears on 1878 map. ¹³¹ City has not yet reviewed this property for heritage significance. ¹³²
R	Stone cottage	Montreal Street north of John Counter Boulevard	Abandoned, one-storey, stone cottage in field. History unknown. Building in this location appears on 1878 map. ¹³³ City has not yet reviewed this property for heritage significance. ¹³⁴

¹²⁸ J.H. Meacham & Co., *Illustrated Historical Atlas of Frontenac, Lennox and Addington Counties, Ontario, 1878*, (as reprinted by Mika Publishing Co., Belleville, 1977), p.57; *Goad's Fire Insurance Plan of Kingston, 1908 (revised to 1911)*, Plate 45; *Goad's Fire Insurance Plan of Kingston, 1924*, Plate 19.

¹²⁹ Conversation with Marcus Létourneau, City of Kingston, 18 June 2009.

¹³⁰ Conversation with Marcus Létourneau, City of Kingston, 18 June 2009.

¹³¹ Meacham's 1878 Atlas, p. 57.

¹³² Conversation with Marcus Létourneau, City of Kingston, 18 June 2009.

¹³³ Meacham's 1878 Atlas, p. 57.

¹³⁴ Conversation with Marcus Létourneau, City of Kingston, 18 June 2009.

APPENDIX E – TYPES OF HERITAGE IDENTIFICATIONS

The following types of heritage designations and commemorations were considered:

UNESCO World Heritage Sites – UNESCO identifies and commemorates world heritage sites. In Canada, World Heritage sites are managed by Parks Canada using a management plan.

National Historic Sites – The Historic Sites and Monuments Board of Canada identifies national historic sites for commemoration by the Minister. Sites can be private- or government-owned. Commemoration is honorific and conservation cannot be enforced. Federally-owned National Historic Sites are managed by Parks Canada using a commemorative integrity statement, and/or a management plan.

National Historic Persons and National Historic Events (plaques) – The Historic Sites and Monuments Board of Canada identifies persons and events of national historic significance for commemoration by the Minister. A plaque is normally erected at a location of significance for the person or event being commemorated.

Heritage Railway Stations – The Historic Sites and Monuments Board of Canada identifies heritage railway stations for designation by the Minister under the *Heritage Railway Stations Protection Act*. The Act prescribes an approval process for sale, alteration, demolition or removal. The Act applies only to railway stations owned by railway companies.

Canadian Heritage River – The Canadian Heritage Rivers system was established by the federal, provincial and territorial governments to recognize outstanding rivers and ensure that future management will protect them and enhance their significant heritage values for the long term benefit and enjoyment of Canadians.

Federal Heritage Buildings – The Federal Heritage Buildings Review Office (FHBRO) is operated by Parks Canada. Under Treasury Board policy, it evaluates all federally-owned buildings over 40 years of age to determine if they have significant heritage value. The most significant buildings are labeled “Classified”; other significant buildings are labeled “Recognized”. Federal heritage buildings are managed by the federal government to conserve their heritage value. The FHBRO system only applies to buildings; it does not consider landscapes or other structures. Federally-owned properties cannot be municipally designated.

Ontario Heritage Trust – The Ontario Heritage Trust (OHT) is an agency of the Ontario government. It owns and manages certain properties of provincial heritage significance. There are no OHT-owned properties within the EA study area. It also holds easements on certain heritage properties that compel the property owner to manage the property in a certain way. There are no OHT easements within the EA study area.

Ontario Realty Corporation Heritage Places – The Ontario Realty Corporation (ORC) is an agency of the provincial government that manages provincially-owned properties. It evaluates provincially-owned properties to determine if they have significant heritage value to the province. Properties with significant heritage value are identified as “heritage places” and are managed so as to conserve their value. There are no ORC Heritage Places within the EA study area.

Municipal Designations (Part IV) – The City of Kingston can designate individual properties (both privately- and municipally-owned) under the *Ontario Heritage Act*, Part IV, section 29. The city must enact a designation by-law with reasons for designation. The designation normally applies to the legal boundaries of the property. The conservation of designated property can be enforced under the Act.

Municipal Heritage Conservation Districts (Part V) – The City of Kingston can create a heritage conservation district for a group of properties with different owners, under the *Ontario Heritage Act*, Part V. The city must enact a designation by-law and prepare a heritage conservation district plan. The boundaries of the district are set out in the plan. The management of properties within the district is governed by the heritage conservation district plan. The conservation of the district can be enforced under the Act.

Municipal Listings – Under the *Ontario Heritage Act*, the City of Kingston can list individual properties on its heritage register without enacting a formal designation. The city may do this as a temporary measure to monitor certain properties. The city can list private- and government-owned properties.

Municipal Easements – The City of Kingston can hold an easement on heritage property, compelling the property owner to manage the property in a certain way. The easement is enforced by the city.