

LEGEND

WILDLAND FIRE HAZARD AREAS

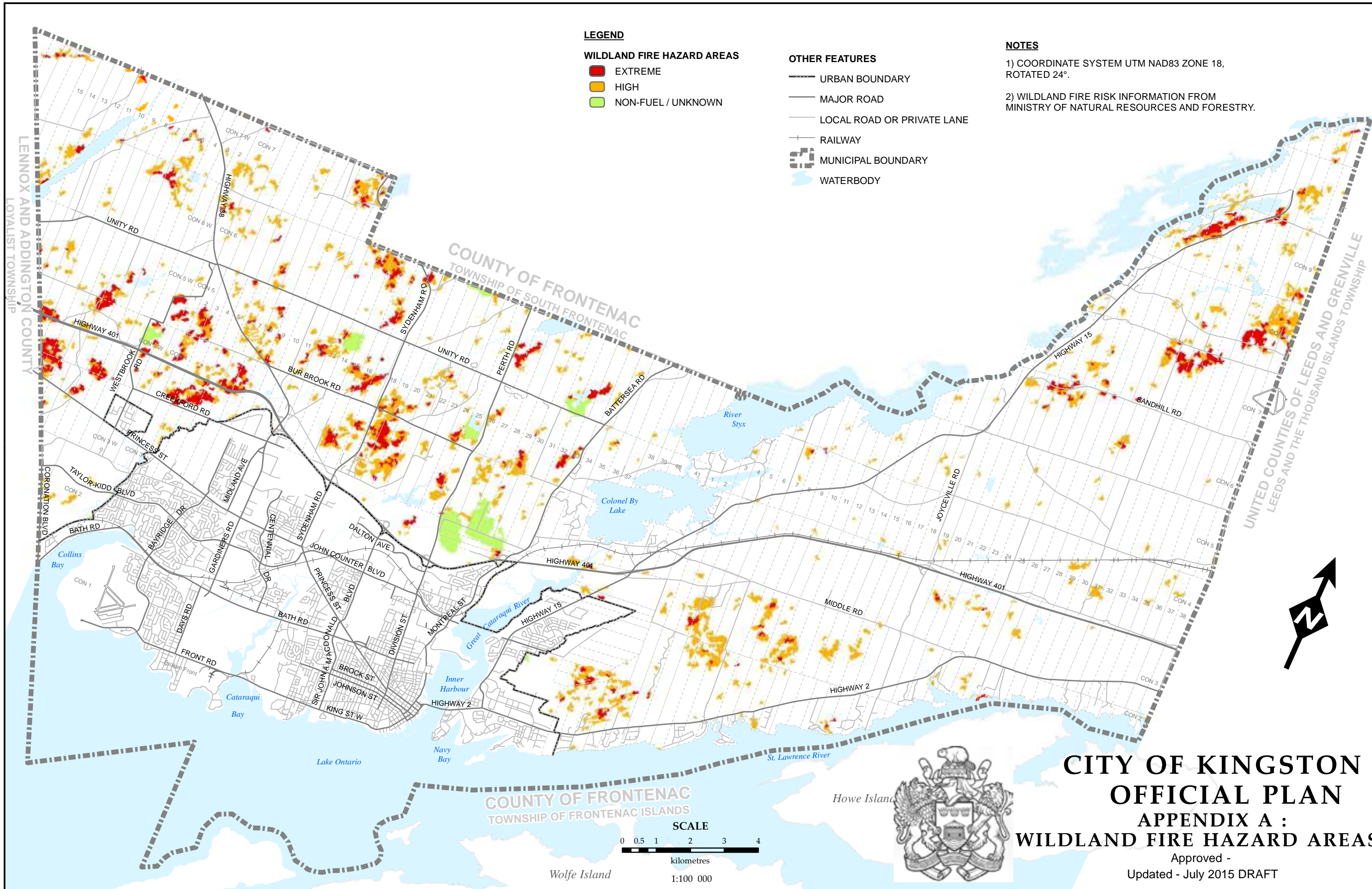
- EXTREME
- HIGH
- NON-FUEL / UNKNOWN

OTHER FEATURES

- URBAN BOUNDARY
- MAJOR ROAD
- LOCAL ROAD OR PRIVATE LANE
- | RAILWAY
- MUNICIPAL BOUNDARY
- WATERBODY

NOTES

- 1) COORDINATE SYSTEM UTM NAD83 ZONE 18, ROTATED 24°.
- 2) WILDLAND FIRE RISK INFORMATION FROM MINISTRY OF NATURAL RESOURCES AND FORESTRY.



Map Document: G:\CAD\2015\151434 - Kingston OP&ZBL\MXDs\Appendix A Wildland Fire Risk.mxd
Printing Date: 09-Jul-15

**CITY OF KINGSTON
OFFICIAL PLAN
APPENDIX A :
WILDLAND FIRE HAZARD AREAS**
Approved -
Updated - July 2015 DRAFT

