

Airport Infrastructure Expansion

Concepts for
Public Information Session

February 25, 2013



Quick Facts

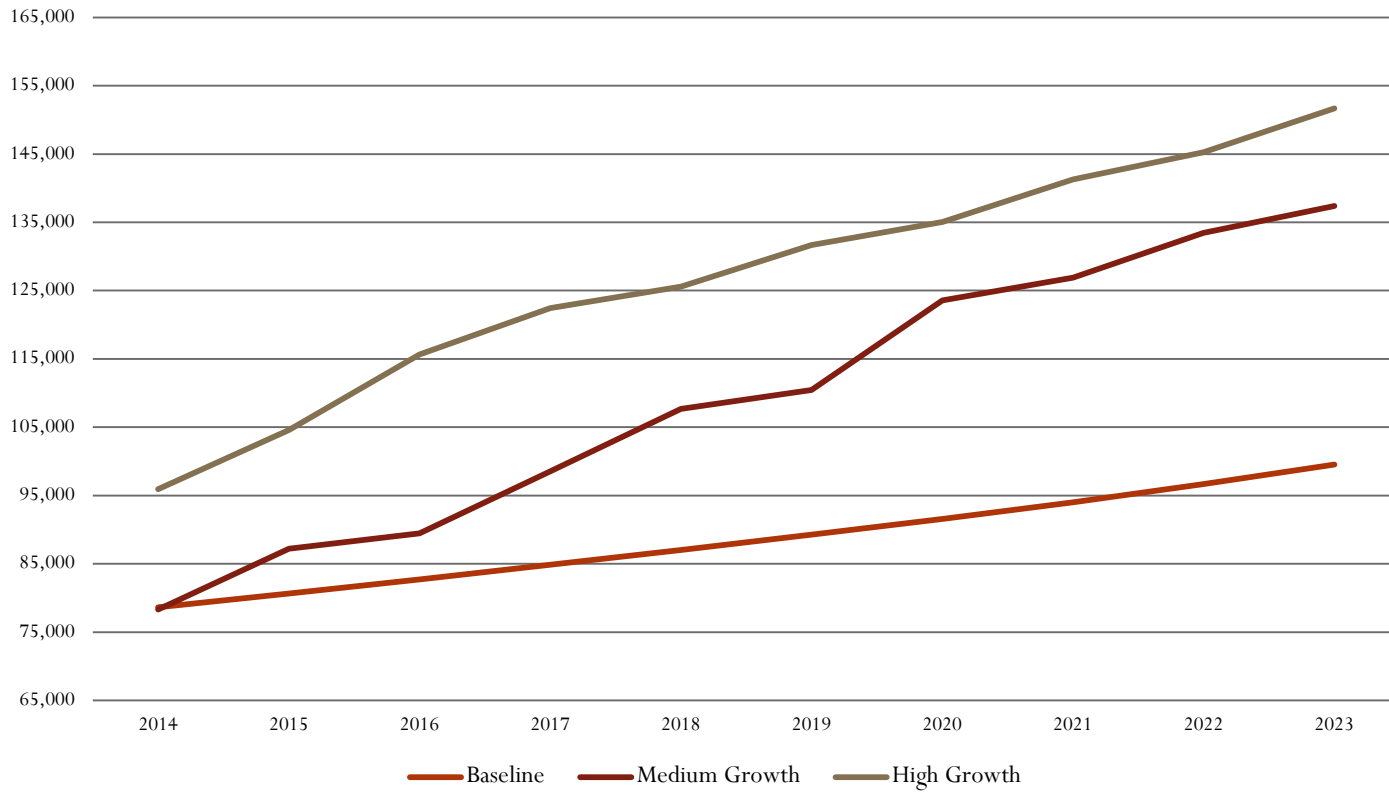
- **Airport is owned and operated by the City of Kingston**
- **Over 65,000 trips started or ended at the airport in 2012 (about 180 per day on average)**
- **Runway 01/19 is 1,503 M x 30 M**
- **Economic Impact estimated at \$49M in 2009**
- **Provided direct employment for 117, indirect for 339**

Master Plan till now.....

- **2007 Master Plan indicated a possible expansion to runway 01/19 and to Passenger Terminal**
- **In light of Council's strategic priorities to enhance infrastructure and promote economic development, a Business Case was prepared in 2011, indicating it was timely to expand.**
- **At Council's direction, an Implementation Plan was developed and approved in 2012.**
 - **First step: prepare concepts, PDD and a Class C estimate.**
 - **MMM Group engaged to prepare these.**

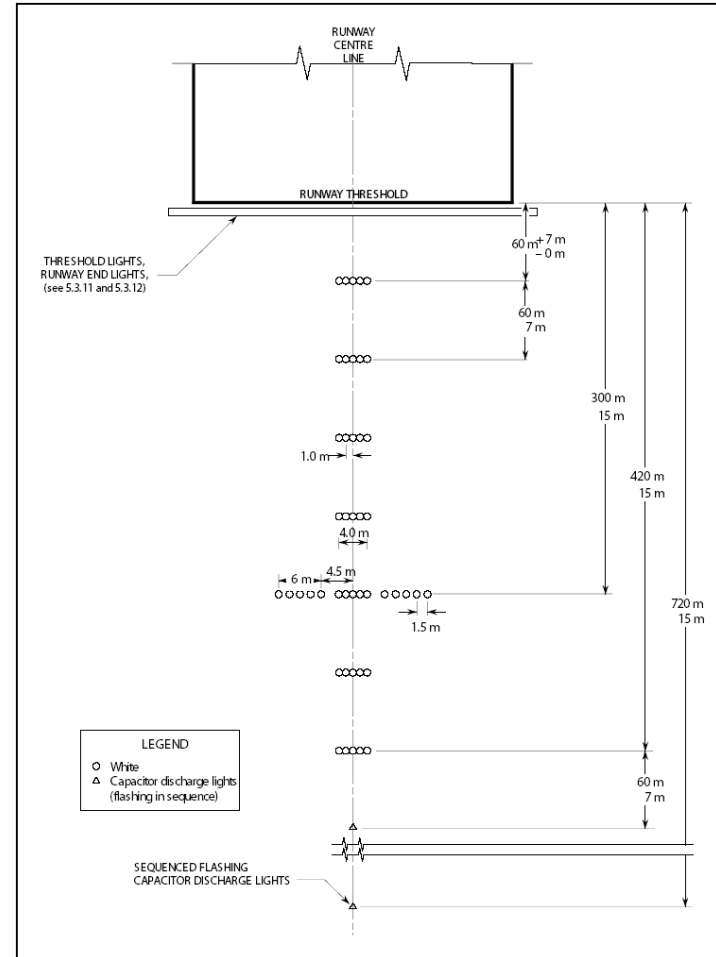
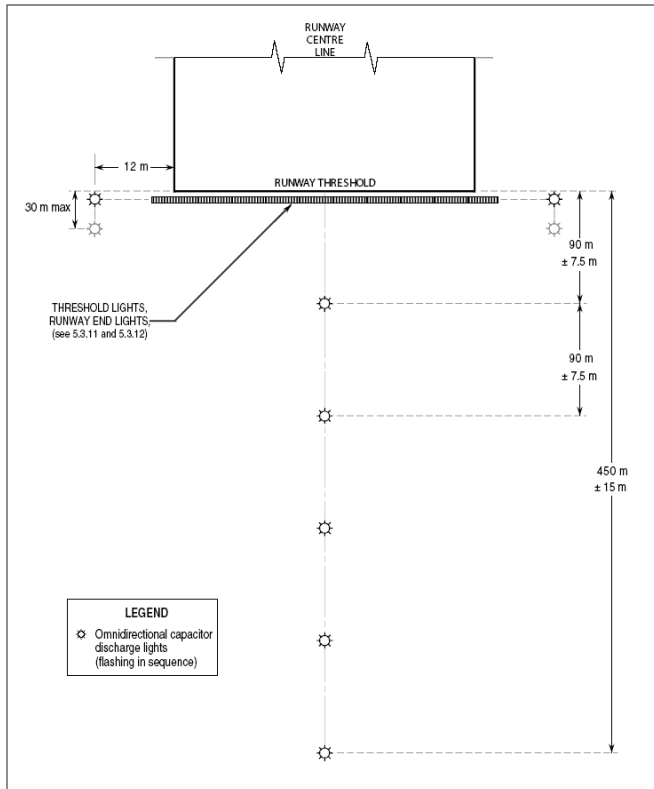
Market Environment

Kingston Airport Forecasts

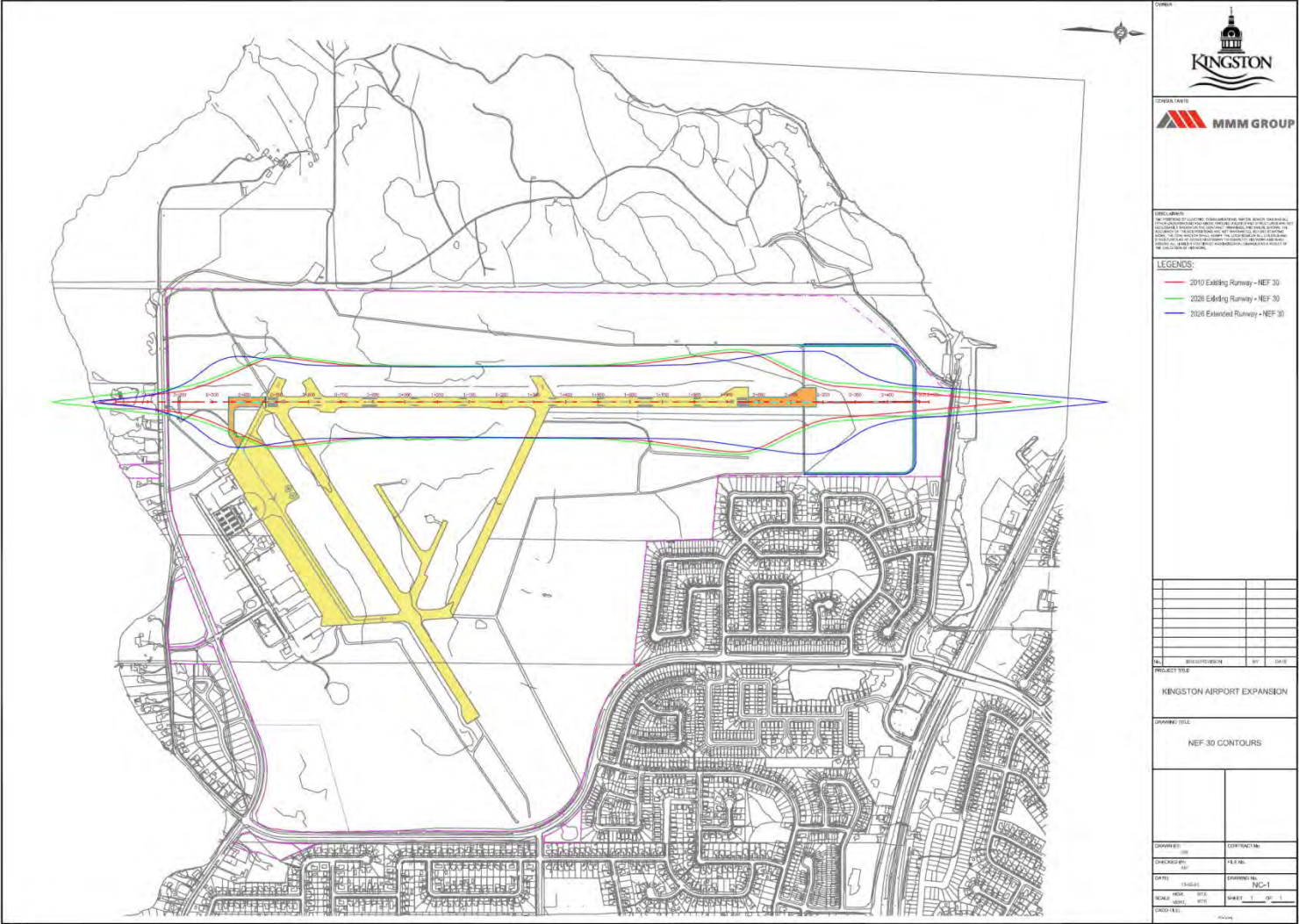


Source: LPS Avia "Business Case for Expansion Kingston Airport", December 2011

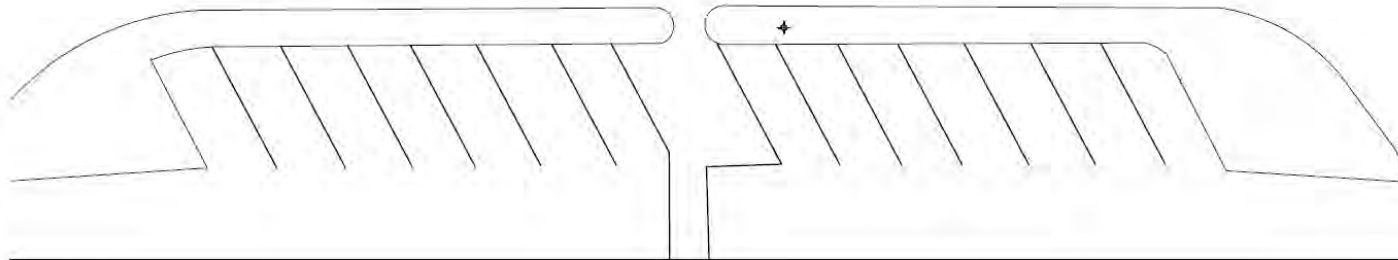
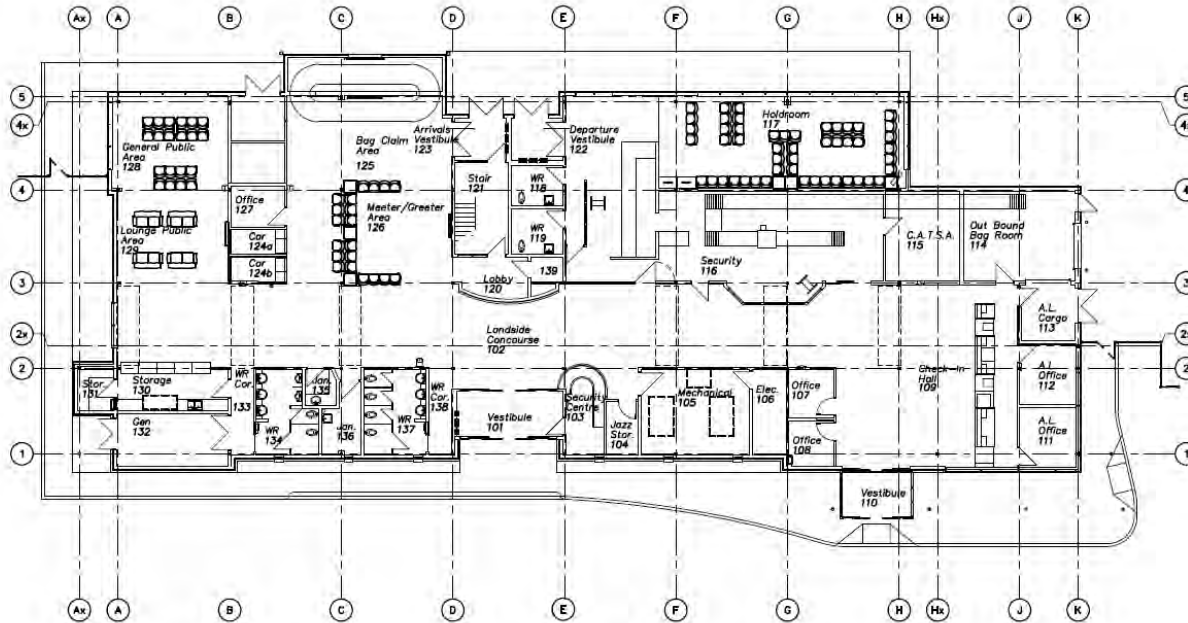
Approach Lighting Improvements



Noise Exposure Forecasts



Existing Terminal



KINGSTON AIRPORT EXPANSION
KINGSTON, ON

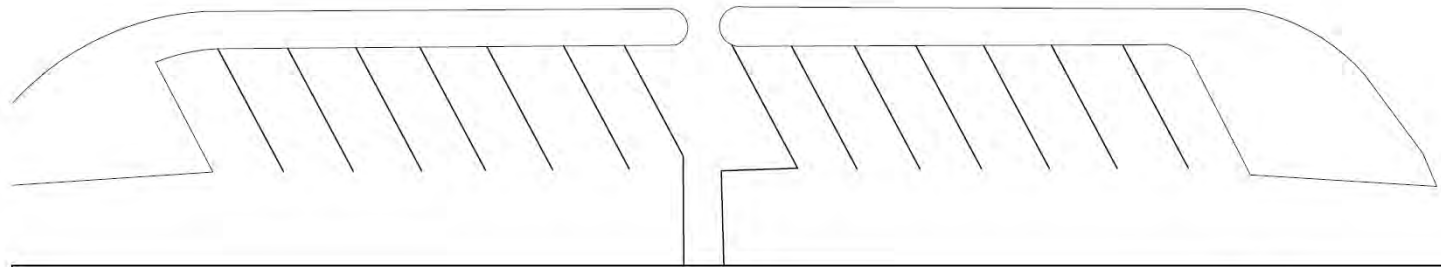
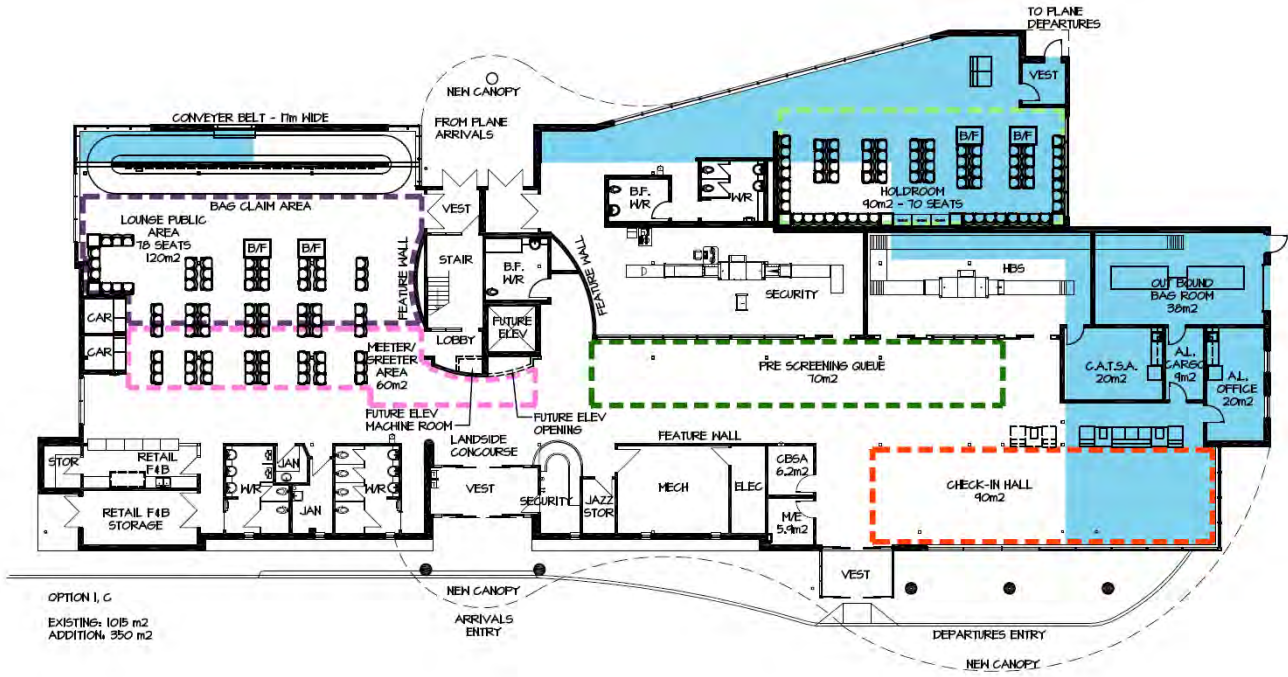
EXISTING FLOOR PLAN



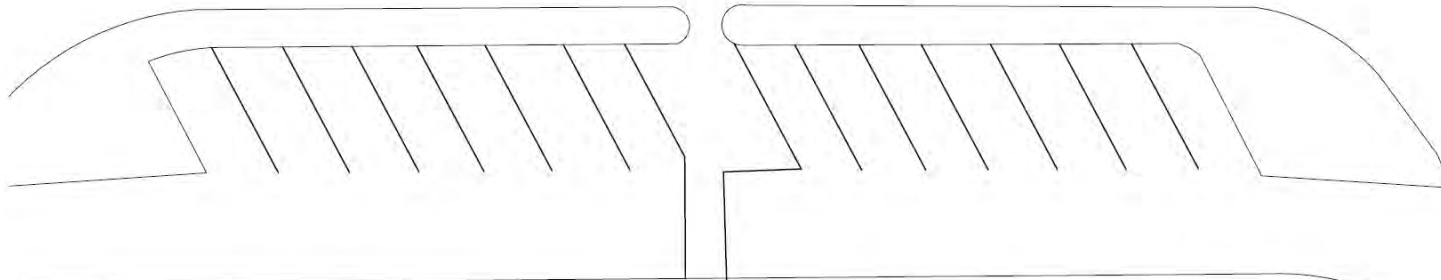
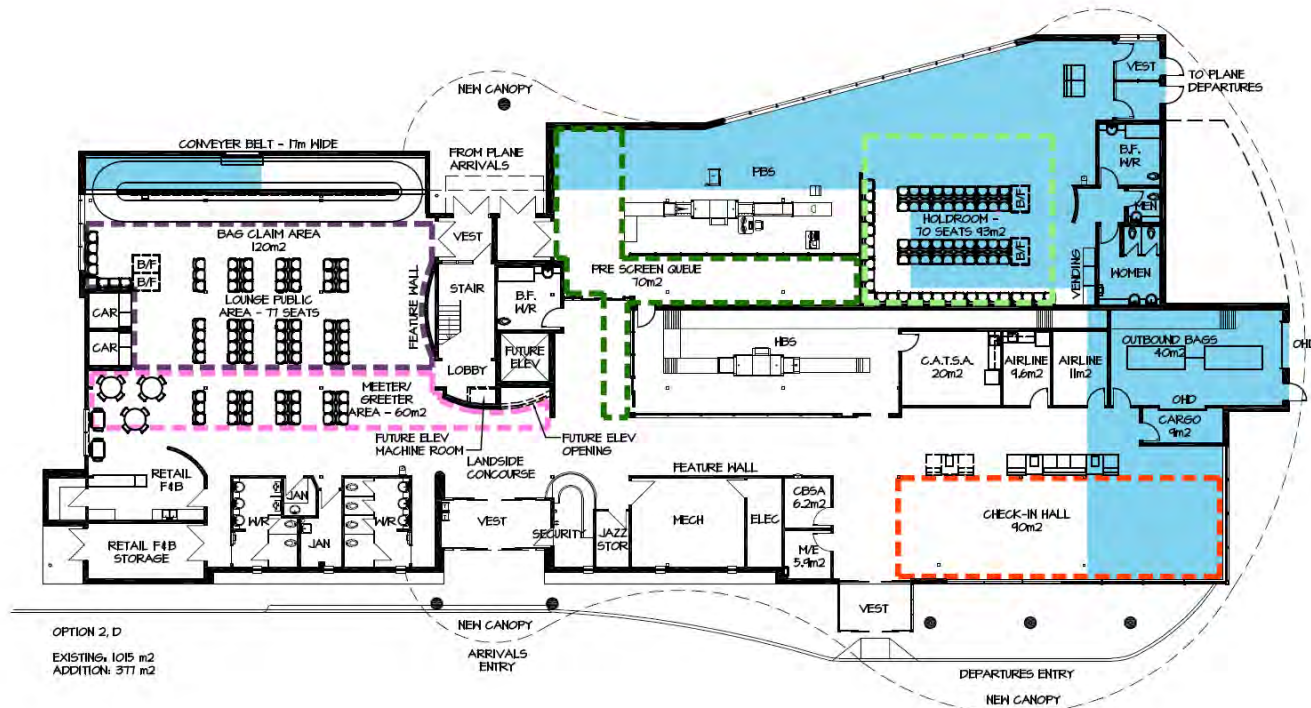
GOLBOURNE & KEVBEL
ARCHITECTS INC.

613-381-1240
www.gkai.ca

Terminal Options



Terminal Options





KINGSTON AIRPORT EXPANSION
KINGSTON, ON

CONCEPT PERSPECTIVE



COLBOURNE & KEMBEL
ARCHITECTS INC.

613-384-2240
www.ckai.ca

Questions?



Image captured on October 9th, 2010 by D Groll / M Hill