

Ministry of Consumer Services / Ministère des Services aux consommateurs
 Ontario
 Consumer Protection Branch / Direction de la protection du consommateur
 Licence # 3348757

March 16, 2010
 City of Kingston
 216 Ontario Street
 Kingston ON K7L 2Z3
 Attention: Carolyn Downs, City Clerk

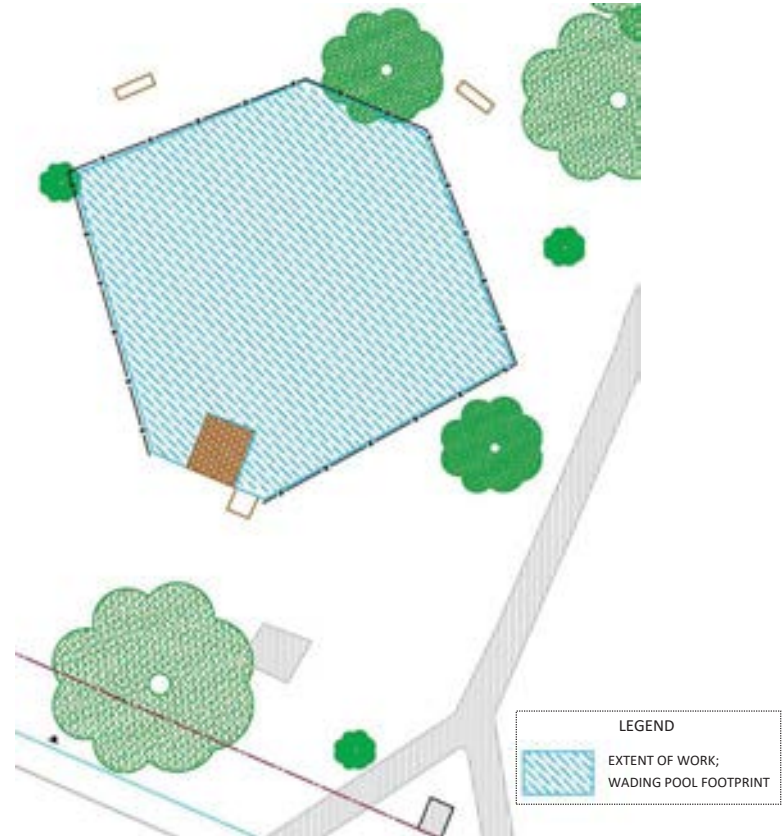
Dear Ms. Downs:
Re: McBurney Park Cemetery
 This letter is in reference to the McBurney Park Cemetery located in Kingston, Ontario. Our records indicate that the site is owned by the City of Kingston.
 Our file indicates that the site was once known as the Upper Burial Grounds and may contain close to 10,000 burials from interments conducted until 1964.
 Although the site is being used as a park, I wish to remind the municipality that the site is a cemetery. The burials cannot be disturbed and any activities or work in the cemetery must not impact any burials in the park. The City of Kingston should post a sign to make citizens aware that the park is a cemetery so that it can be treated respectfully as such.
 In addition, I understand that the site is bordered by Ordinance, Alma and Bellevue Streets but we have no survey of the property clearly defining the cemetery boundaries or the extent of the burials. Kindly provide our office with a survey or plan of the property that defines the cemetery boundaries so that we can ensure that our cemetery registration records are complete.
 Should you have any questions or wish to discuss this matter further, please do not hesitate to contact our office at 416-326-5333 or 1-800-465-9766.

Yours truly,

 Michael D'Mello
 Registrar, Cemeteries Act (Revised)



1. The site is a heritage cemetery



2. The work will be strictly limited to the extents of the existing wading pool footprint.

MCBURNEY PARK

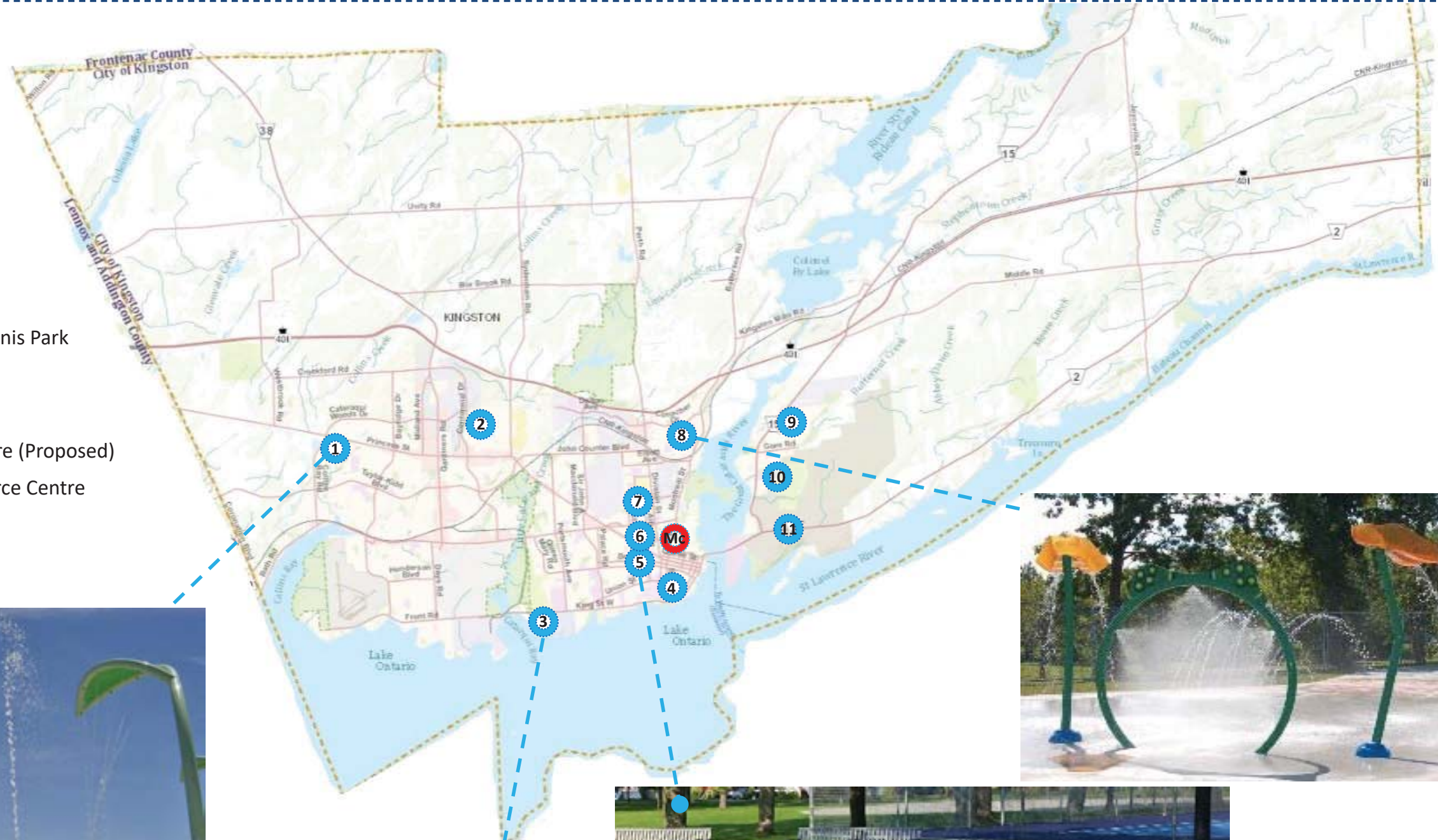


SITE CONSTRAINTS



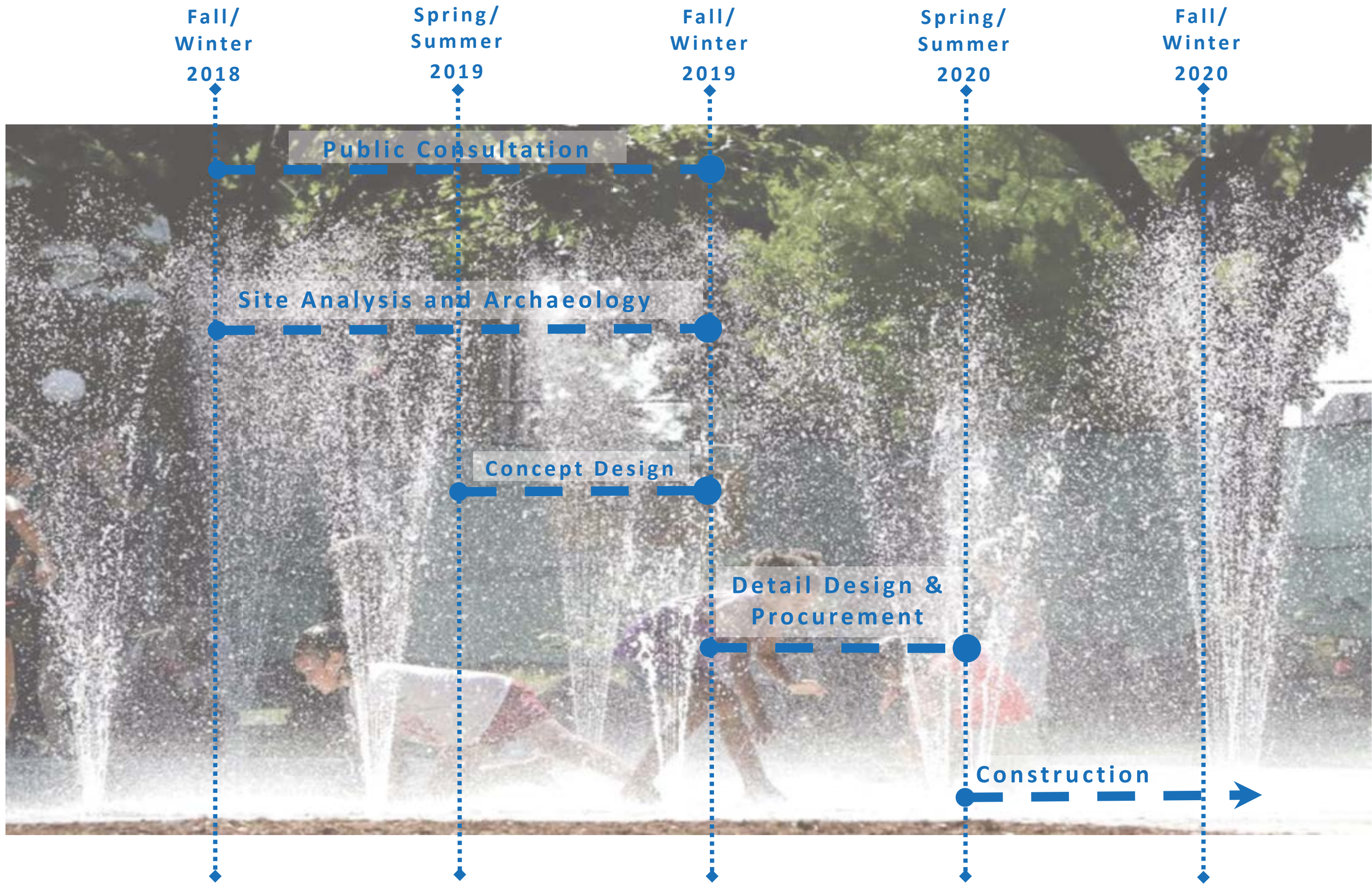
LEGEND

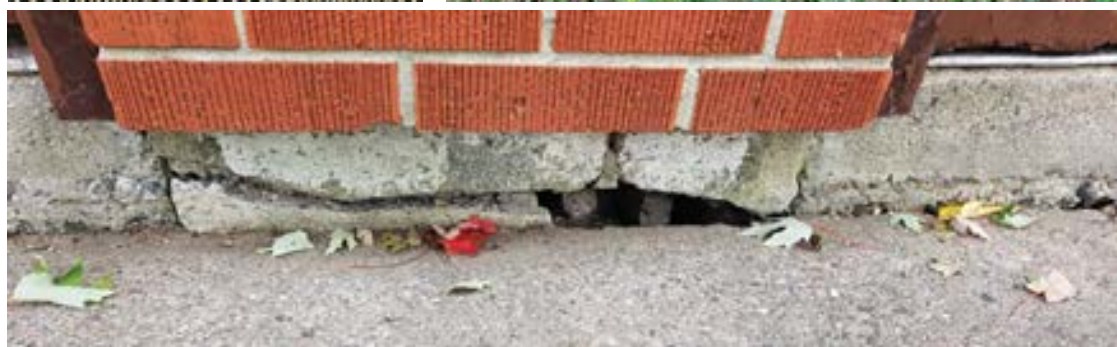
- 1 Woodbine Park
- 2 Bert Meunier Common
- 3 Lake Ontario Park
- 4 City Park
- 5 Victoria Park
- 6 Memorial Centre
- 7 Ronald Lavallee Memorial Kiwanis Park
- 8 Shannon Park
- 9 Molly McGlynn Park
- 10 Kingston East Community Centre (Proposed)
- 11 Kingston Military Family Resource Centre
- Mc McBurney Park



MCBURN EY PARK

MCBURNEY PARK





1. The existing building is not accessible
2. The brick veneer is deteriorating
3. Water drains toward the building