



CITY OF KINGSTON
NORTH BLOCK DISTRICT

BLOCK 4 -
EXISTING ACCESS AND
CIRCULATION

- Bus Route 12
- Route 12 Bus Stop
- Preferred Pedestrian Route
- Ferry Traffic Flow
- Signalized Intersection
- Utility Access



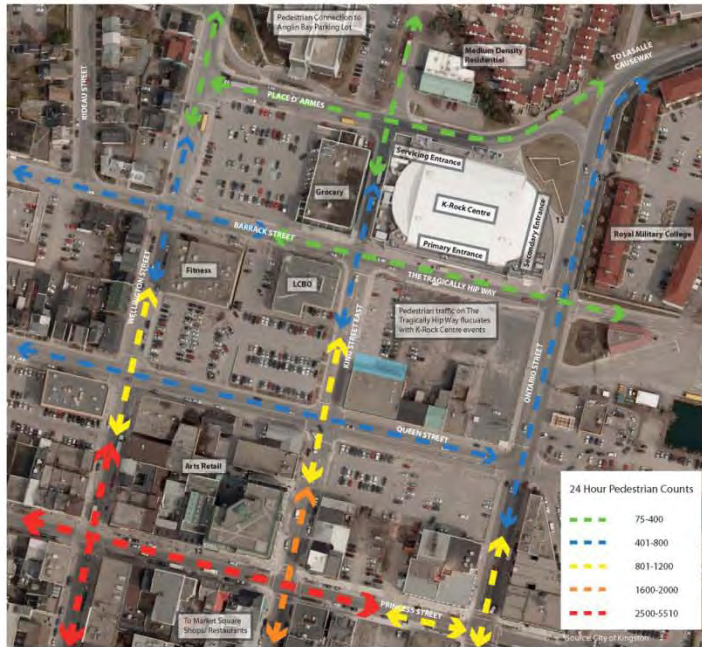


CITY OF KINGSTON
NORTH BLOCK DISTRICT

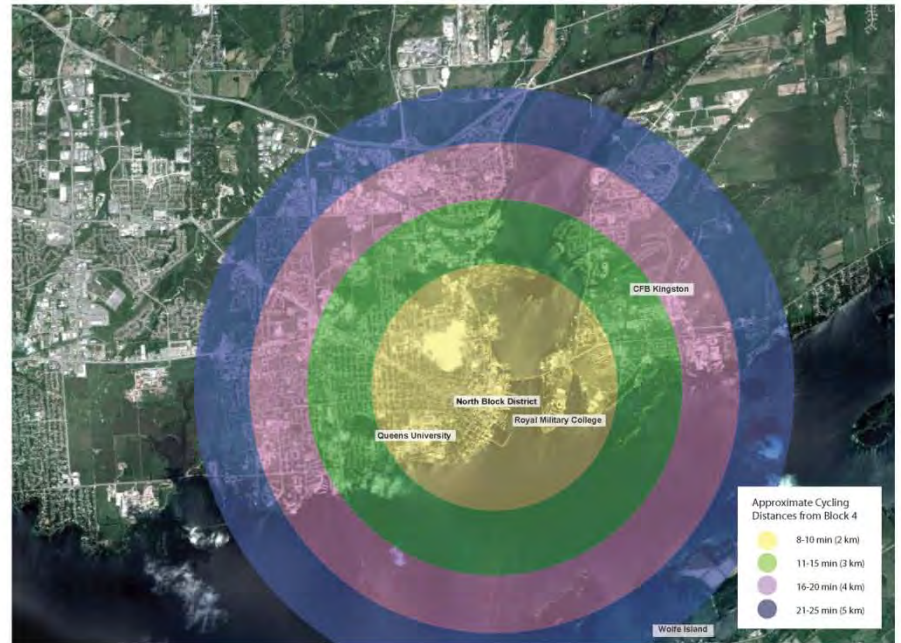
BLOCK 4 -
FUTURE ACCESS AND
CIRCULATION

- Bus Route 12
- Route 12 Bus Stop
- Express Bus Route 2
- Express Bus Stop
- Preferred Pedestrian Route
- Proposed Cycling Route
- Ferry Traffic Flow
- Possible Vehicular Access
- Utility Access
- Signalized Intersection



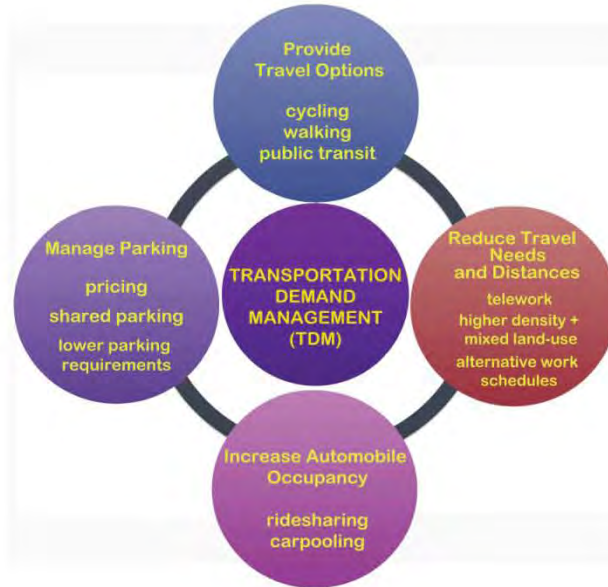


CITY OF KINGSTON NORTH BLOCK DISTRICT PEDESTRIAN / BICYCLE COUNTS AND TRAVEL DISTANCES





CITY OF KINGSTON NORTH BLOCK DISTRICT TRANSPORTATION DEMAND MANAGEMENT (TDM)



- Lower impact on road network and/or parking
- Higher impact on road network and/or parking

Potential Land Use	Transportation Characteristics					
	Private Auto Peak Hour Trip Generation	Non-Auto Mode Share	Transportation Demand Management (TDM)	Traffic Impact	Parking	Overall
Residential (assumed multi-storey condo)	○	●	●	●	○	●
Retail (assumed ground floor) and/or Services (assumed bank, restaurant, etc.)	●	○	○	●	●	○
Employment (assumed general office)	○	○	●	○	○	○
Hotel	●	○	○	○	○	○
Conference Centre	○	○	○	○	○	○