

LEGEND

WILDLAND FIRE HAZARD AREAS

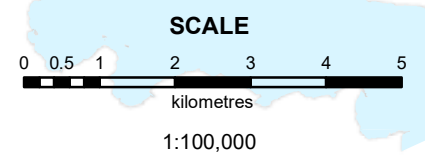
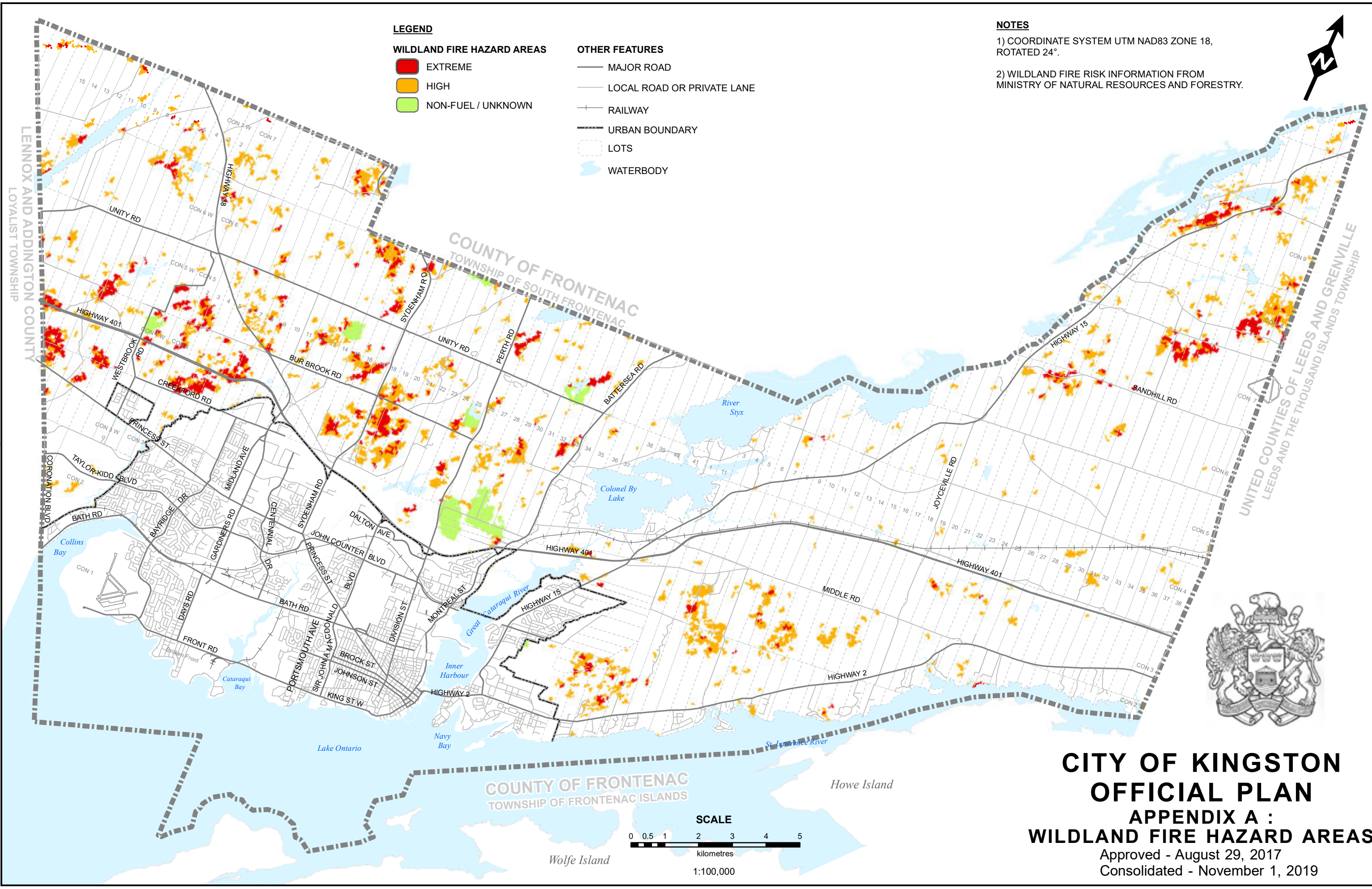
- EXTREME
- HIGH
- NON-FUEL / UNKNOWN

OTHER FEATURES

- MAJOR ROAD
- LOCAL ROAD OR PRIVATE LANE
- RAILWAY
- URBAN BOUNDARY
- LOTS
- WATERBODY

NOTES

- 1) COORDINATE SYSTEM UTM NAD83 ZONE 18, ROTATED 24°.
- 2) WILDLAND FIRE RISK INFORMATION FROM MINISTRY OF NATURAL RESOURCES AND FORESTRY.



**CITY OF KINGSTON
 OFFICIAL PLAN
 APPENDIX A :
 WILDLAND FIRE HAZARD AREAS**
 Approved - August 29, 2017
 Consolidated - November 1, 2019