

LEGEND

UNSTABLE BEDROCK (KARST TOPOGRAPHY)

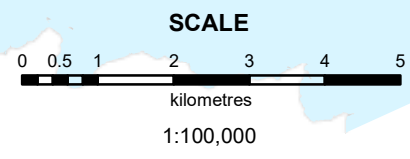
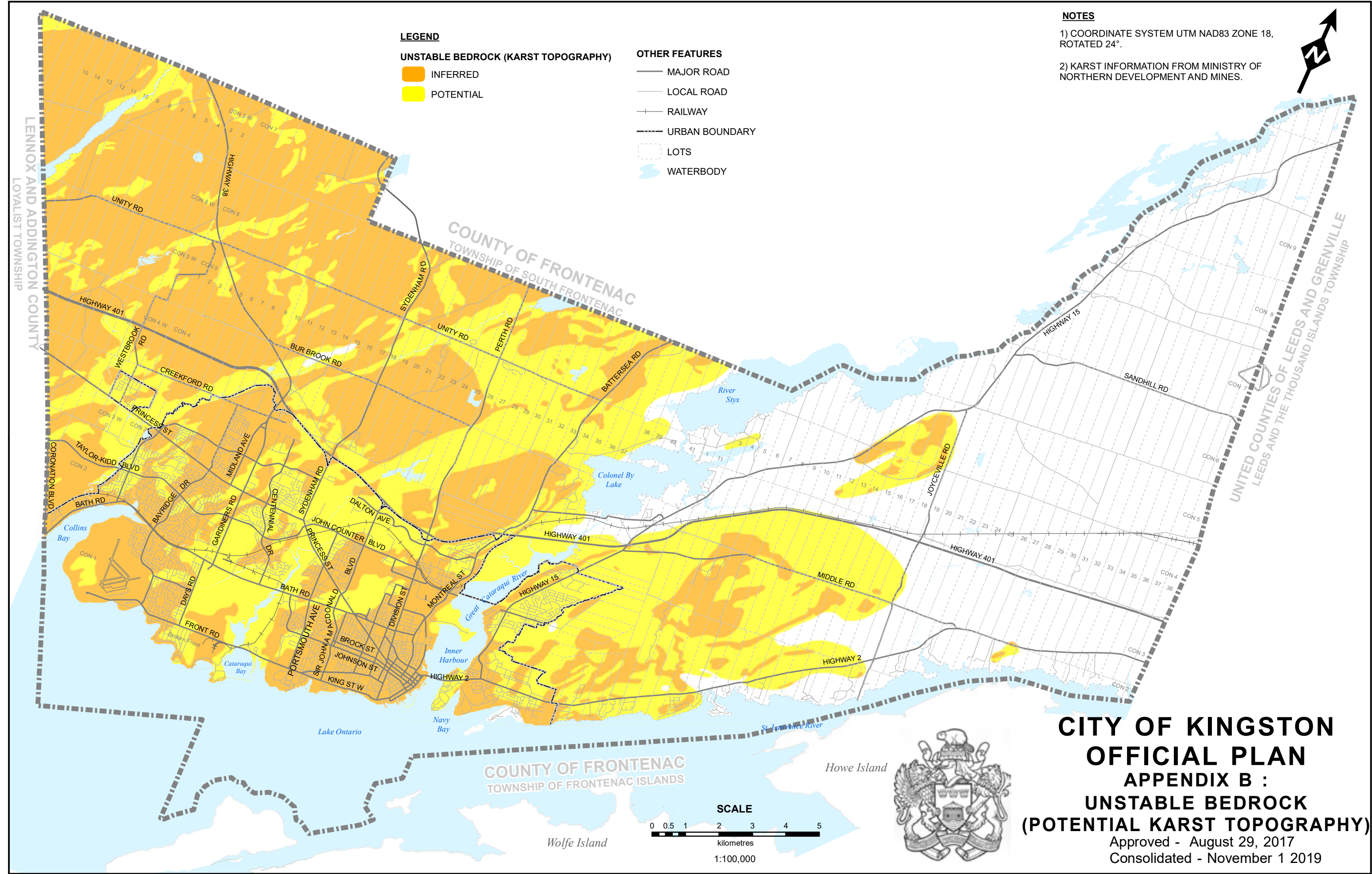
- INFERRED
- POTENTIAL

OTHER FEATURES

- MAJOR ROAD
- LOCAL ROAD
- RAILWAY
- URBAN BOUNDARY
- LOTS
- WATERBODY

NOTES

- 1) COORDINATE SYSTEM UTM NAD83 ZONE 18, ROTATED 24°.
- 2) KARST INFORMATION FROM MINISTRY OF NORTHERN DEVELOPMENT AND MINES.



**CITY OF KINGSTON
 OFFICIAL PLAN
 APPENDIX B :
 UNSTABLE BEDROCK
 (POTENTIAL KARST TOPOGRAPHY)**
 Approved - August 29, 2017
 Consolidated - November 1 2019

LENOX AND ADDINGTON COUNTY
 LOYALIST TOWNSHIP

COUNTY OF FRONTENAC
 TOWNSHIP OF SOUTH FRONTENAC

COUNTY OF FRONTENAC
 TOWNSHIP OF FRONTENAC ISLANDS

UNITED COUNTIES OF LEEDS AND GRENVILLE
 LEEDS AND THE THOUSAND ISLANDS TOWNSHIP