

LEGEND

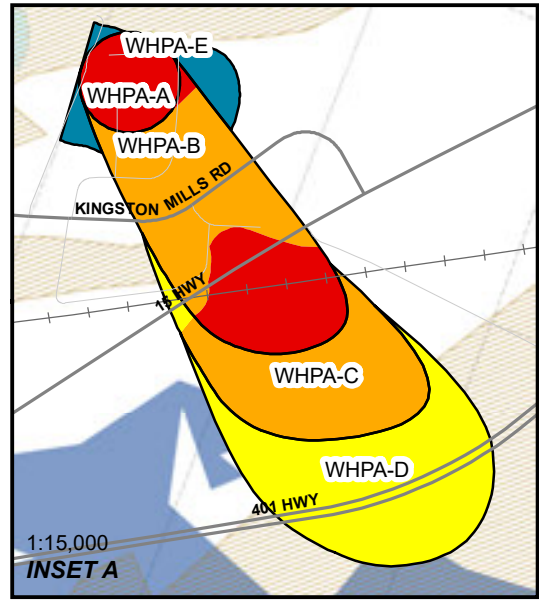
- INTAKE PROTECTION ZONE
 IPZ_TYPE
 IPZ-1
 IPZ-2
 SURFACE WATER INTAKE

- HIGHLY VULNERABLE AQUIFER
 SIGNIFICANT GROUND WATER RECHARGE AREAS
 WELLHEAD PROTECTION AREA
 6
 7
 8
 10

OTHER FEATURES

- URBAN BOUNDARY
 MAJOR ROAD
 LOCAL ROAD
 RAILWAY
 MUNICIPAL BOUNDARY
 WATERBODY

CANA WELLHEAD PROTECTION AREA



NOTES

1) COORDINATE SYSTEM UTM NAD83 ZONE 18, ROTATED 24°.

OFFICIAL PLAN AMENDMENTS

OPA No.	By-Law	Date Passed	Location
50	2017-57	2017-08-29*	OP Five Year Review

* Approved by Minister of Municipal Affairs August 8, 2017 and came into effect August 29, 2017

**CITY OF KINGSTON
 OFFICIAL PLAN
 SCHEDULE 11-B
 CONSTRAINT MAPPING
 SOURCE WATER PROTECTION**

Approved - August 29, 2017
 Consolidated - November 1, 2019

