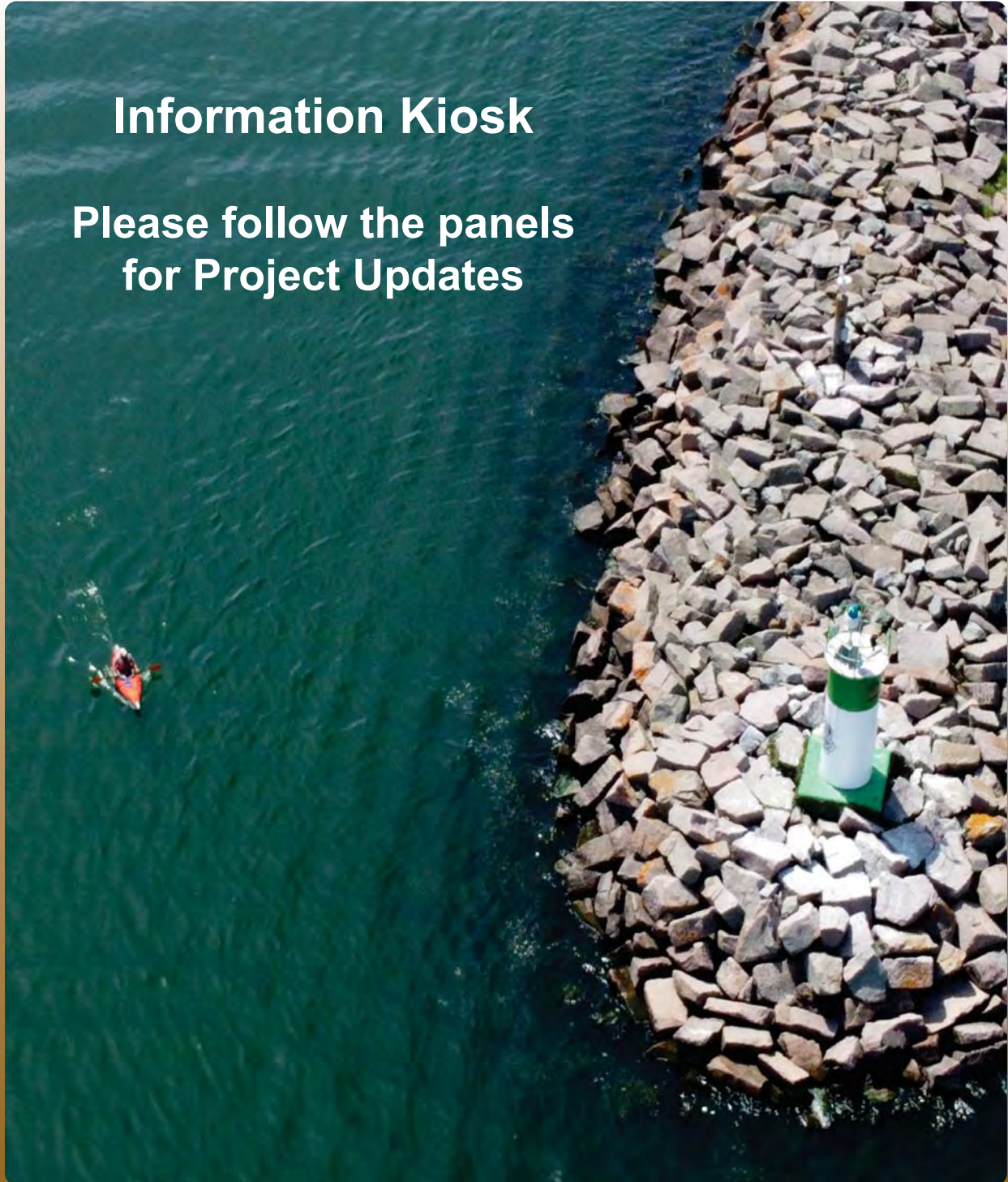




Confederation Basin Promenade

Information Kiosk

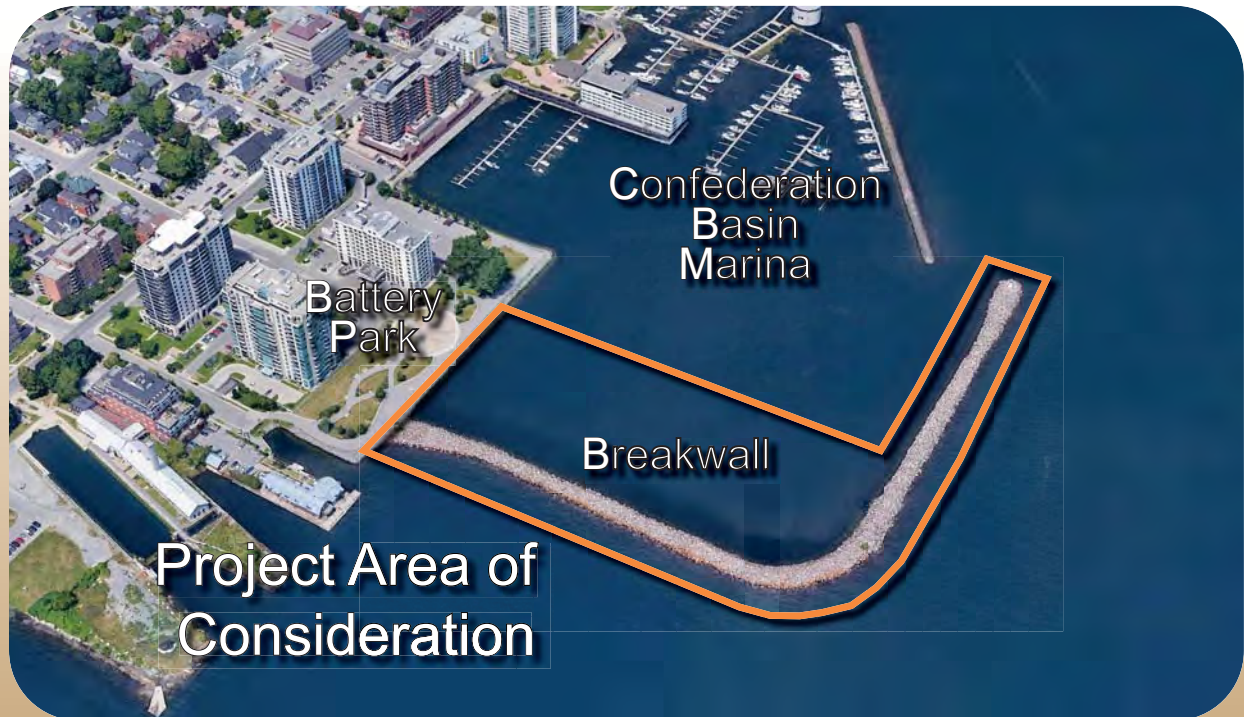
**Please follow the panels
for Project Updates**



The City of Kingston acknowledges that we are on the traditional homeland of the Anishinaabe, Haudenosaunee and the Huron-Wendat, and thanks these nations for their care and stewardship over this shared land.



Confederation Basin Promenade



About The Project

The Confederation Basin Promenade Project proposes a new accessible walkway and public space experience built on the existing stone breakwall that shelters Flora MacDonald Confederation Basin.

The Waterfront Master Plan (WFMP) conceptualized and consulted on the Promenade Project and a high level scope of work was established and approved by Council in 2016.

Visit the project page using the link below or by using the QR code.

Timeline



Project Contact

Laurie Paquin
Project Manager
Parks & Shoreline,
Engineering Services

Tel: 613-546-4291
Extension 2128

Email: lpquin@cityofkingston.ca



The City of Kingston acknowledges that we are on the traditional homeland of the Anishinaabe, Haudenosaunee and the Huron-Wendat, and thanks these nations for their care and stewardship over this shared land.



Confederation Basin Promenade

Project Update - Enhanced Design

In April 2022, City Council approved the “Enhanced Design” option for the Promenade which includes:

- An enhanced entry area,
- A 4m wide concrete promenade to the Bend,
- A 5m wide lookout area at the Bend,
- A 3m wide walkway to the Lighthouse (Beacon),
- Extra seating; and
- A larger floating raft for water access.



Artist Rendering

The cost of the project is now estimated at \$9 Million and is to be offset by a contribution by Kingston Accommodation Partners of \$1.5 million over three years.



The City of Kingston acknowledges that we are on the traditional homeland of the Anishinaabe, Haudenosaunee and the Huron-Wendat, and thanks these nations for their care and stewardship over this shared land.



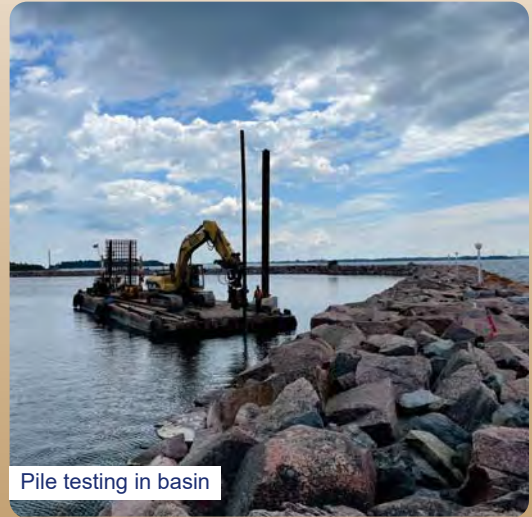
Confederation Basin Promenade

Project Update - Geotechnical Testing

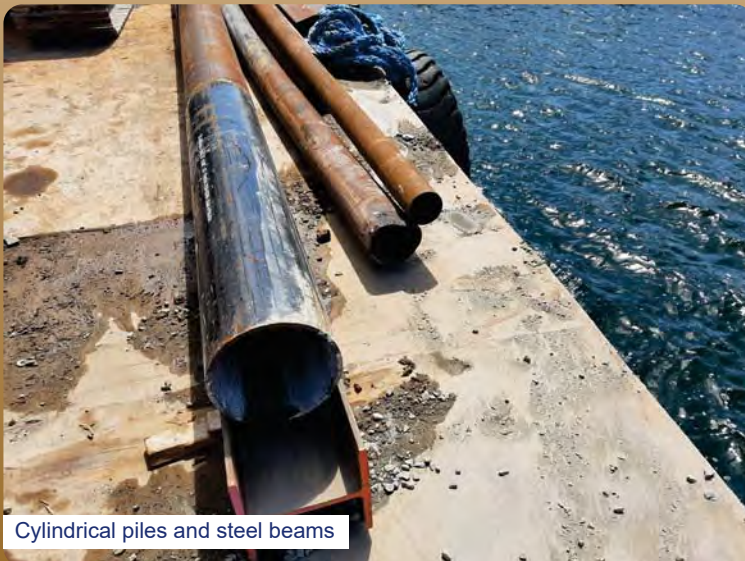
Through July 2022, geotechnical testing was performed at various locations along the breakwall. The testing confirmed the condition of the core of the breakwall and helped to determine the effectiveness of various support options for the walkway. Results of the geotechnical testing will be used to develop the detailed design for the walkway and to determine feasible options for construction.



Testing of sheet pile



Pile testing in basin



Cylindrical piles and steel beams



Cylindrical pile driven into exposed core



The City of Kingston acknowledges that we are on the traditional homeland of the Anishinaabe, Haudenosaunee and the Huron-Wendat, and thanks these nations for their care and stewardship over this shared land.



Confederation Basin Promenade

Project Update - Second Segment Design

To optimize the available budget for the project, the team is exploring two design solutions for constructing the Second Segment of the Promenade. The two solutions are a Concrete Deck and an Elevated Walkway. Both solutions include a terminus lookout at the lighthouse (beacon), seating, lighting and railings where required. Please refer to Panels 6 and 7 to view artist renderings showing what the two solutions might look like.



The City of Kingston acknowledges that we are on the traditional homeland of the Anishinaabe, Haudenosaunee and the Huron-Wendat, and thanks these nations for their care and stewardship over this shared land.



Confederation Basin Promenade

Project Update - Concrete Deck Solution

The **Concrete Deck Solution** involves constructing a poured-in-place concrete walkway supported by piles installed through the breakwall core. The Concrete Deck is proposed to sit within the breakwall stones and will be protected on the lake facing side with a low seatwall.



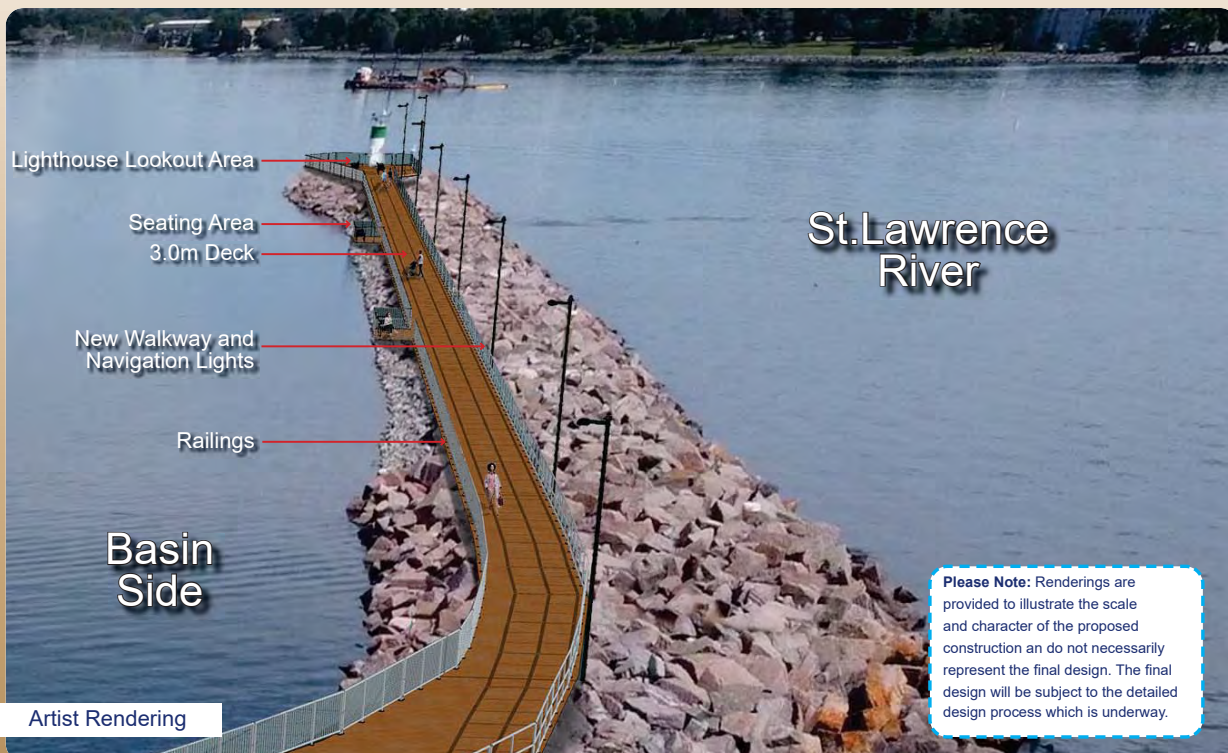
The City of Kingston acknowledges that we are on the traditional homeland of the Anishinaabe, Haudenosaunee and the Huron-Wendat, and thanks these nations for their care and stewardship over this shared land.



Confederation Basin Promenade

Project Update - Elevated Walkway Solution

The **Elevated Walkway Solution** is proposed as a pile supported structure with a timber deck. The Elevated Walkway would sit approximately 0.5m above the breakwall stones, would be aligned slightly off-centre towards the basin and may require railings on both sides.



The City of Kingston acknowledges that we are on the traditional homeland of the Anishinaabe, Haudenosaunee and the Huron-Wendat, and thanks these nations for their care and stewardship over this shared land.



Confederation Basin Promenade

**Thank you
for your continued interest
in this project.**



The City of Kingston acknowledges that we are on the traditional homeland of the Anishinaabe, Haudenosaunee and the Huron-Wendat, and thanks these nations for their care and stewardship over this shared land.