

LEGEND

- Prime Agricultural Area
- Environmental Protection Area
- Estate Residential
- Hamlet
- Harbour Area
- Institutional
- Mineral Resource
- Open Space
- Rural Lands
- Rural Commercial
- Rural Industrial
- Waste Management Industrial Area

OTHER FEATURES

- TRANSCANADA COMPRESSOR STATION
- MAJOR PIPELINE
- TRANS-NORTHERN PIPELINE
- MAJOR ROAD
- LOCAL ROAD
- RAILWAY
- AIRPORT
- RIDEAU CANAL NAVIGATIONAL CHANNEL
- MUNICIPAL BOUNDARY
- LOTS
- WATERBODY
- PIT
- QUARRY
- WOLLASTONITE

NOTES

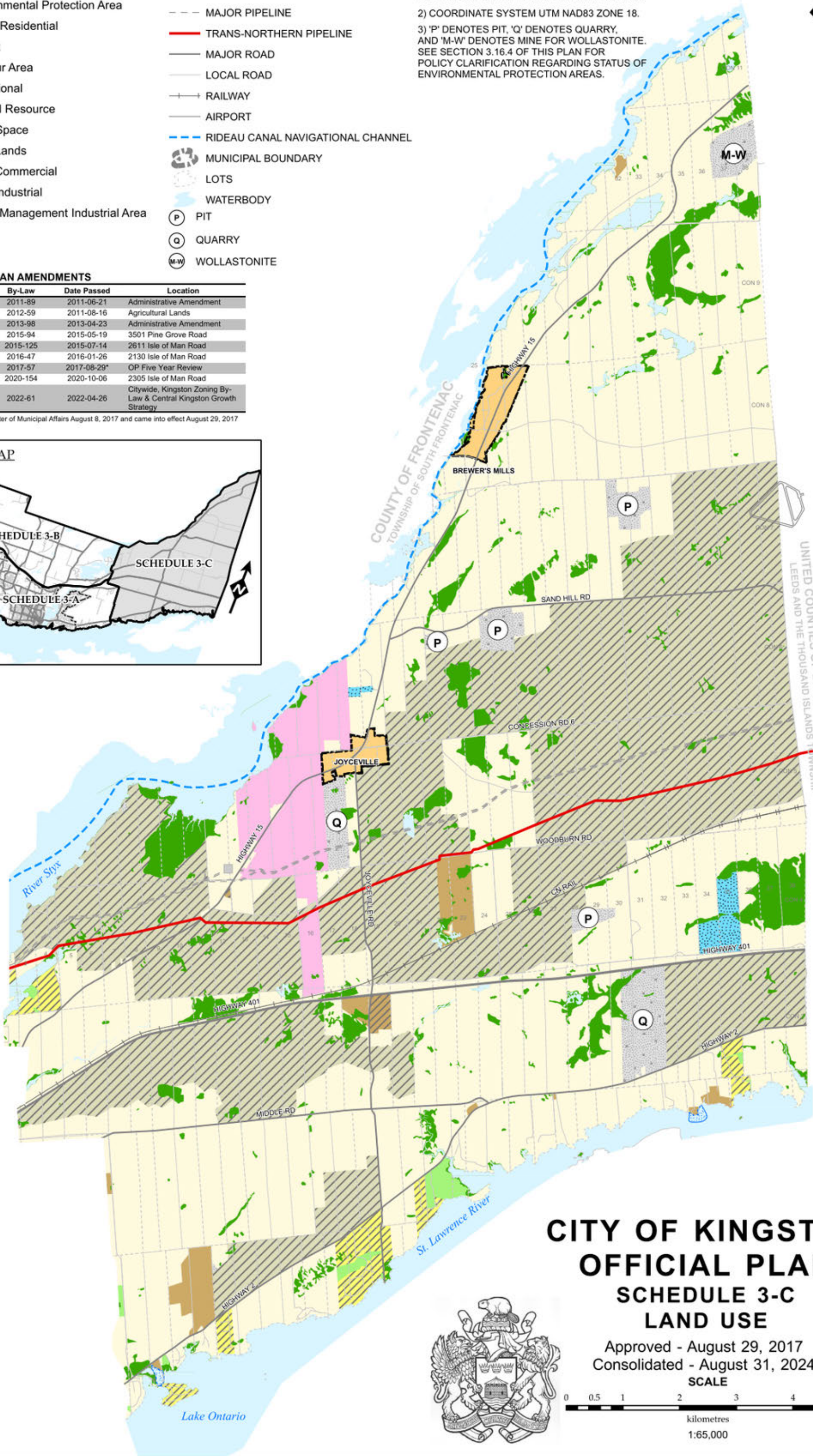
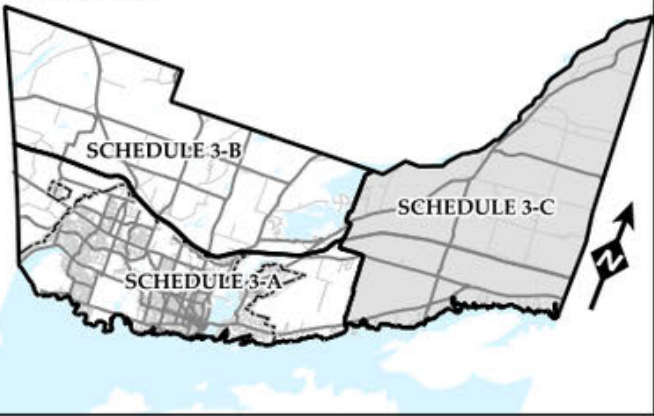
- 1) CERTAIN LAND USE DESIGNATIONS INCLUDED IN THE LEGEND MAY NOT APPEAR ON THE MAP.
- 2) COORDINATE SYSTEM UTM NAD83 ZONE 18.
- 3) 'P' DENOTES PIT, 'Q' DENOTES QUARRY, AND 'M-W' DENOTES MINE FOR WOLLASTONITE. SEE SECTION 3.16.4 OF THIS PLAN FOR POLICY CLARIFICATION REGARDING STATUS OF ENVIRONMENTAL PROTECTION AREAS.

OFFICIAL PLAN AMENDMENTS

OPA No.	By-Law	Date Passed	Location
6	2011-89	2011-06-21	Administrative Amendment
10	2012-59	2011-08-16	Agricultural Lands
16	2013-98	2013-04-23	Administrative Amendment
35	2015-94	2015-05-19	3501 Pine Grove Road
36	2015-125	2015-07-14	2611 Isle of Man Road
46	2016-47	2016-01-26	2130 Isle of Man Road
50	2017-57	2017-08-29*	OP Five Year Review
70	2020-154	2020-10-06	2305 Isle of Man Road
82	2022-61	2022-04-26	Citywide, Kingston Zoning By-Law & Central Kingston Growth Strategy

\* Approved by Minister of Municipal Affairs August 8, 2017 and came into effect August 29, 2017

KEY MAP



CITY OF KINGSTON  
OFFICIAL PLAN  
SCHEDULE 3-C  
LAND USE

Approved - August 29, 2017  
Consolidated - August 31, 2024  
SCALE

